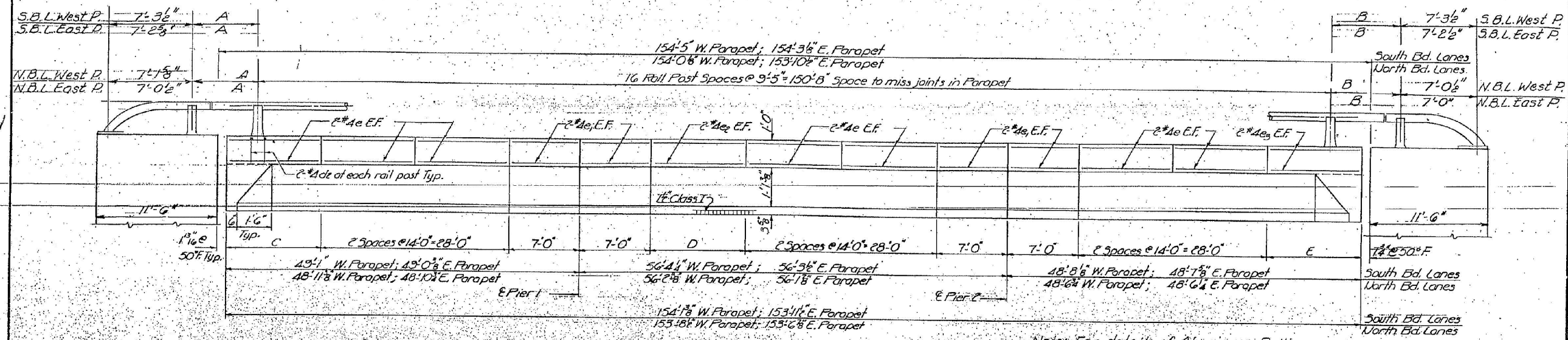


STATE OF ILLINOIS  
DEPARTMENT OF TRANSPORTATION

ROUTE NO.	SECTION	COUNTY	TOTAL SHEETS	SHEET NO.
54-618	LOGAN	40	16	24 SHEETS



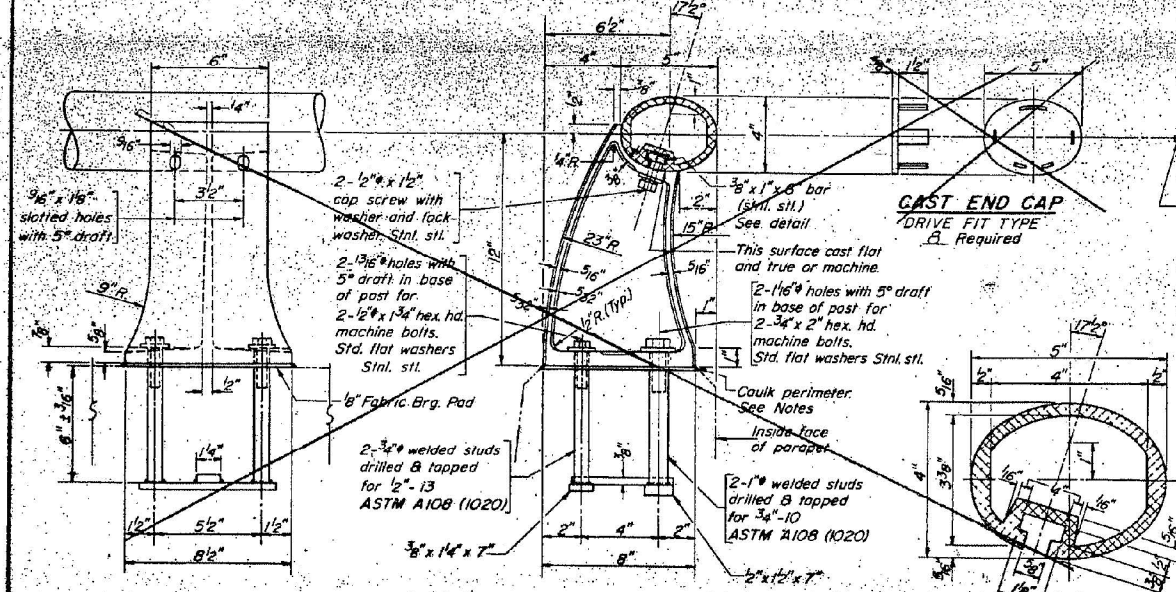
ELEVATION

All dimensions along inside face of parapet  
(Looking West)

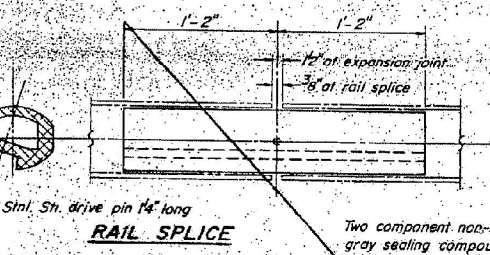
Note: For details of Aluminum Railing see Sheet 9A

DIMENSIONS

Location	A	B	C	D	E
West Parapet S. Bd. Lanes	5'-0"	5'-0"	14'-1"	14'-4 1/2"	13'-8 1/2"
East Parapet S. Bd. Lanes	5'-0"	5'-0"	14'-0 1/2"	14'-3 1/2"	13'-7 1/2"
West Parapet N. Bd. Lanes	5'-0"	5'-0"	13'-11 1/2"	14'-2 1/2"	13'-6 1/2"
East Parapet N. Bd. Lanes	5'-0"	5'-0"	13'-10 3/4"	14'-1 1/2"	13'-6 1/2"



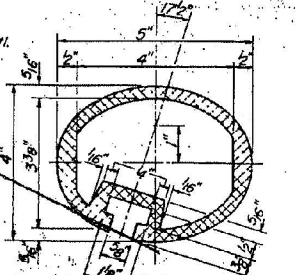
RAIL POST DETAILS



RAIL SPLICE

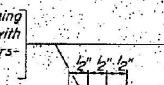
CAST END CAP

DRIVE FIT TYPE  
A Required

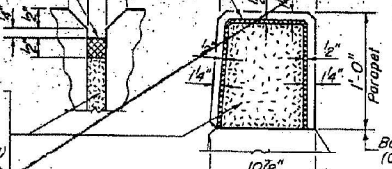


SEC. THRU ELLIPTICAL RAIL SECTION

BAR de



PARAPET JOINT DETAIL



NOTES:

All Aluminum Alloy Extruded Rail shall be supplied in modular lengths of 30 feet, except at the end of bridge or over open joints in bridge deck where the rail shall be attached to a minimum of 2 posts. If the rail is on a horizontal curve of 2300 foot radius or less, the modular lengths may be reduced but shall be attached to a minimum of 2 posts.  
All joints in rail shall be spliced per detail.  
Provide 1-1/8" and 2-1/8" Aluminum Shims for 25% of the Posts. Rail element shall be parallel to Grade - high spots shall be ground and low spots shimmed.  
Seal perimeter of base of post to parapet with two component non-staining gray sealing compound with polysulfide liquid polymer, gun grade with primer. Fabric Bearing Pad shall have same dimensions as base of post.  
Aluminum alloy rail shall conform to ASTM B221 alloy 6061-T6 or 6351-T5 with min yield 35 ksi, min tensile 38 ksi, and elongation of 10% in 2 inches.

TWO BRIDGES  
PARAPETS & RAILS  
BILL OF MATERIAL

Bar No.	Size	Length	Shape
e	1 1/2 #4	13'-9"	
e1	6d #4	6'-5"	
e2	1/2 #4	13'-11"	
e3	1/2 #4	13'-3"	
de	13G #4	2'-1"	
Reinforcement Bars	Lbs.	1800	
Class X Concrete	Cu. Yds.	19.8	
Aluminum Railing	Lin. Ft.	700	

ALUMINUM RAILING  
F.A.I. RTE. 55 SEC. 54-618  
LOGAN COUNTY  
STA. 470+57.86

DESIGNED G.K. Rao  
CHECKED D.A. Rao  
DRAWN  
CHECKED D.A. Rao

EXAMINED  
PASSED  
APPROVED  
DIRECTOR OF HIGHWAYS

R-17 4-22-69 9-18-69

FOR INFORMATION ONLY



JOB = 2236.10  
FILE NAME = 054-0067-0068-72E11-REM.dgn  
PLOT SCALE = 20.0000 / IN.  
PLOT DATE = 3/18/2013

DESIGNED - NAK  
DRAWN - TJD  
CHECKED - NAK  
DATE - 1/30/2012

REVISED -  
REVISED -  
REVISED -  
REVISED -

STATE OF ILLINOIS  
DEPARTMENT OF TRANSPORTATION

EXISTING SN 054-0067 & 0068

SCALE: SHEET NO. 4 OF 12 SHEETS STA. TO STA.

F.A.I. RTE.	SECTION	COUNTY	TOTAL SHEETS	SHEET NO.
55	D6 LOGAN CO BR 2011-1	LOGAN	429	366
CONTRACT NO. 72E11			FED. ROAD DIST. NO. [ILLINOIS] FED. AID PROJECT	