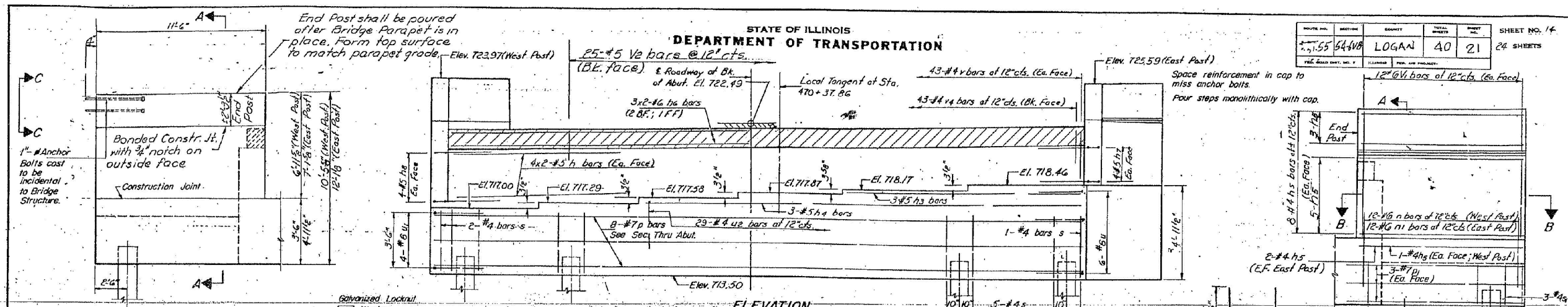


STATE OF ILLINOIS  
DEPARTMENT OF TRANSPORTATION

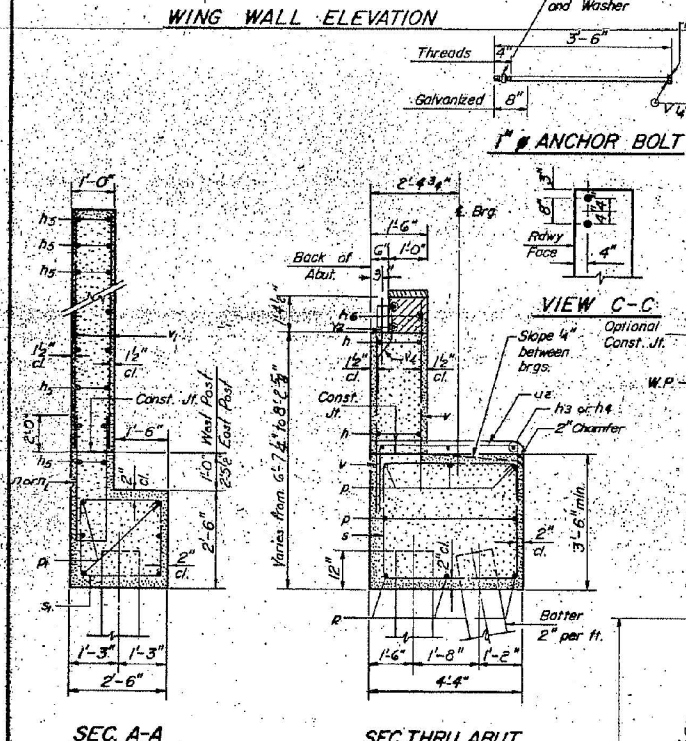
PROJECT NO.	SECTION	COUNTY	TOTAL SHEETS	SHEET NO.
7-55	64-VB	LOGAN	40	21
24 SHEETS				



WING WALL ELEVATION

ELEVATION

WING WALL ELEVATION  
Reinforcement

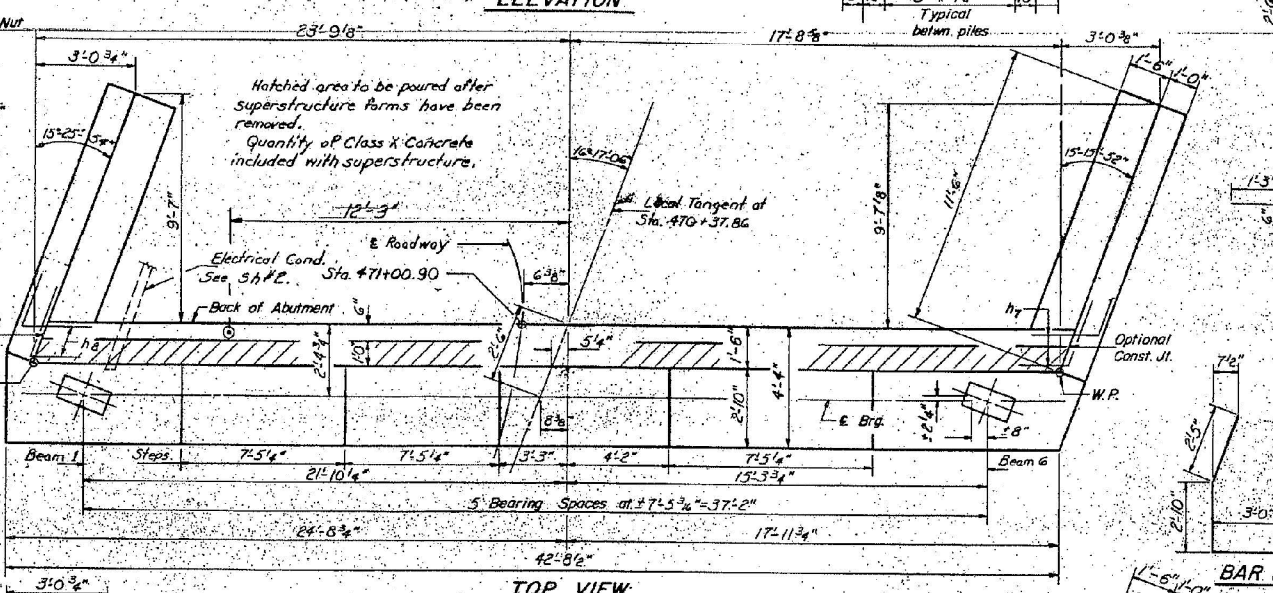


SEC. A-A

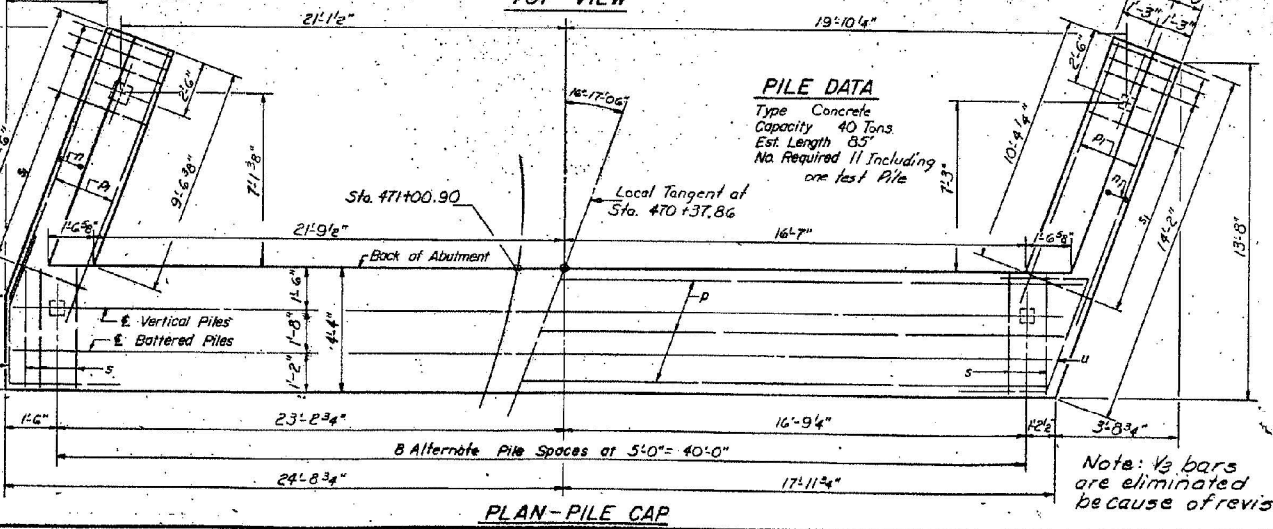
SEC. THRU ABUT.

ANCHOR BOLT

VIEW C-C



TOP VIEW



PLAN-PILE CAP

**PILE DATA**  
Type Concrete  
Capacity 40 Tons  
Est. Length 85'  
No. Required 11 Including one test pile

ONE ABUTMENT  
BILL OF MATERIAL

Bar	No.	Size	Length	Shape
h1	16	#5	21'-6"	
h2	3	#5	13'-6"	
h3	3	#5	29'-0"	
h4	28	#4	11'-3"	
h5	6	#6	21'-9"	
h6	8	#5	5'-3"	
h7	8	#5	3'-3"	
h8	8	#5	3'-3"	
n	12	#6	9'-3"	
n1	12	#6	12'-3"	
p	8	#7	42'-6"	
p1	12	#7	12'-0"	
s	43	#4	15'-1"	
s1	24	#4	9'-5"	
u	6	#6	10'-1"	
u1	4	#6	8'-3"	
u2	29	#4	9'-0"	
v	86	#4	6'-0"	
v1	48	#6	6'-7"	
v2	25	#5	2'-6"	
v3	43	#4	3'-3"	
Class X Concrete			Cu. Yds.	48.7
Reinforcement Bars			Lbs.	4520
Concrete Piles			Lin. Ft.	850
Test Piles Concrete			Eq.	1

NORTH ABUTMENT  
SOUTH BOUND LANES  
FAI. RT. 55 SEC. 54-6VB  
LOGAN COUNTY  
STA. 470+37.86

DESIGNED G.K. Rao  
CHECKED D.A. Rao  
DRAWN S.G. Farchow  
CHECKED D.A. Rao

EXAMINED  
PASSED  
APPROVED  
DIRECTOR OF HIGHWAYS

A-9-R (15°-34°) 2-1-66

Note: #6 bars are eliminated because of revision

FOR INFORMATION ONLY



JOB = 2236.10  
FILE NAME = 054-0067\_0068-72E11-REM.dgn  
PLOT SCALE = 20.0000' / IN.  
PLOT DATE = 3/18/2013

DESIGNED - NAK  
DRAWN - TJD  
CHECKED - NAK  
DATE - 1/30/2012

REVISED -  
REVISED -  
REVISED -  
REVISED -

STATE OF ILLINOIS  
DEPARTMENT OF TRANSPORTATION

EXISTING SN 054-0067 & 0068

SCALE: SHEET NO. 6 OF 12 SHEETS STA. TO STA.

F.A.I. RTE.	SECTION	COUNTY	TOTAL SHEETS	SHEET NO.
55	D6 LOGAN CO BR 2011-1	LOGAN	429	368
CONTRACT NO. 72E11				
FED. ROAD DIST. NO. [ILLINOIS] FED. AID PROJECT				