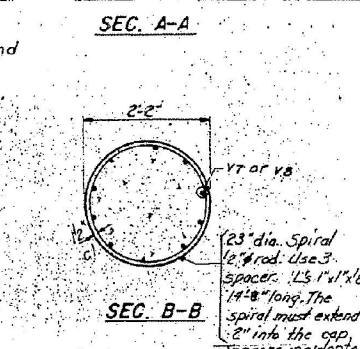
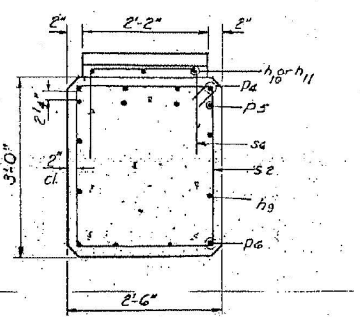
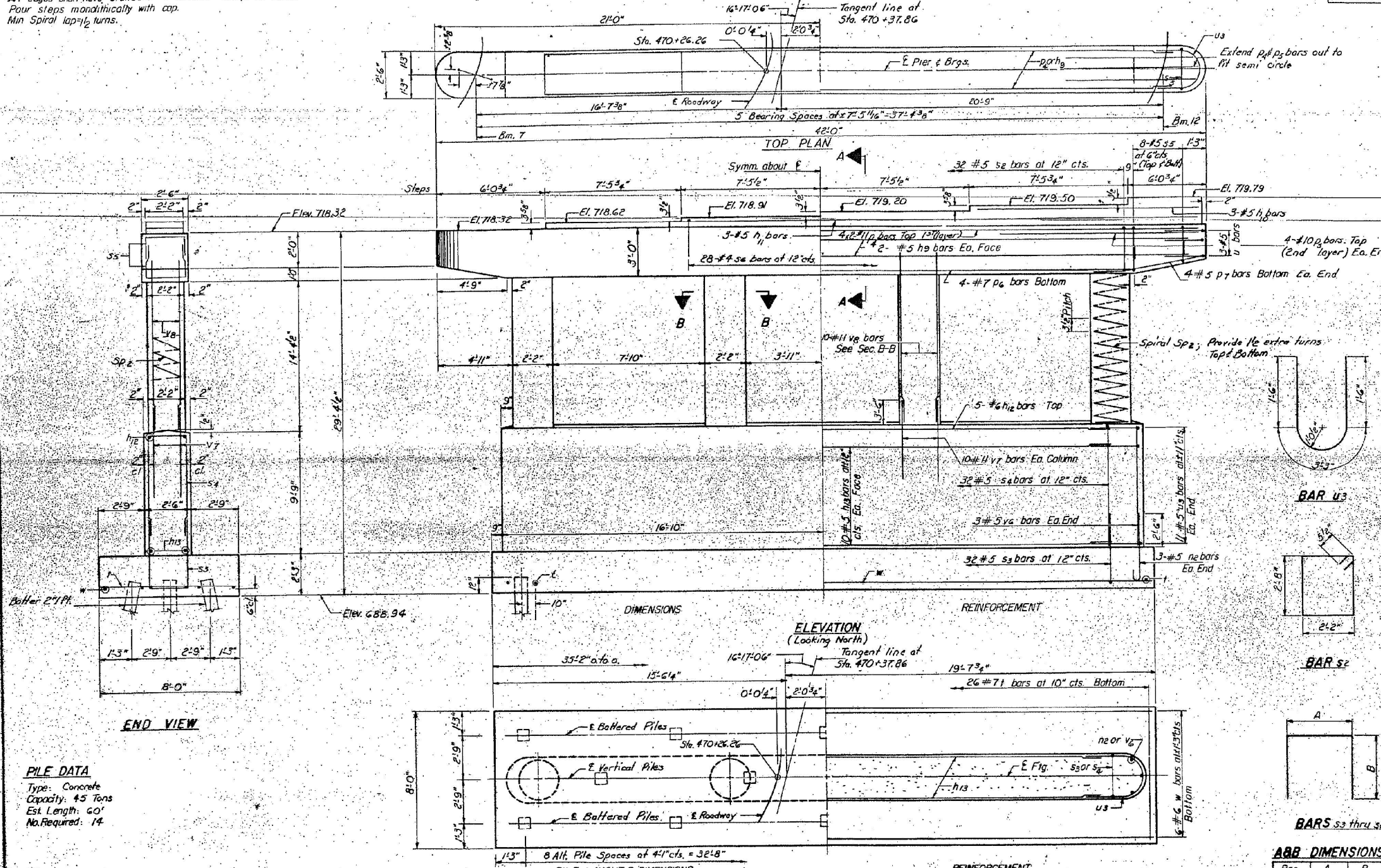


**NOTES:**

Space Reinforcement in cap to girth anchor bolts.  
 All edges shall have standard  $\frac{3}{4}$ " chamfer except as noted.  
 Pour steps monolithically with cap.  
 Min Spiral lap  $\frac{1}{2}$  turns.

STATE OF ILLINOIS  
 DEPARTMENT OF TRANSPORTATION

DATE	SECTION	BRIDGE	SPAN	PIER	SHEET NO. 13
5/15/10	54-618	LOGAN	40	26	24 SHEETS



ONE PIER  
 BILL OF MATERIAL

Bar	No.	Size	Length	Shape
h9	4	#5	39'-6"	
h10	3	#5	12'-3"	
h11	3	#5	27'-0"	
h12	5	#6	3'-4"	
h13	20	#5	3'-10"	
p2	6	#5	4'-10"	
p6	8	#11	23'-0"	
p5	8	#10	13'-10"	
p7	8	#7	32'-6"	
s2	32	#5	10'-7"	
s3	32	#5	10'-8"	
s4	32	#5	19'-2"	
s5	32	#5	6'-2"	
s6	28	#4	6'-5"	
sp2	4	#6	14'-7"	WWWW
v7	1	#7	7'-9"	
u3	28	#5	6'-3"	
v6	6	#5	8'-6"	
v7	40	#11	8'-6"	
v8	40	#11	16'-3"	
w	6	#6	34'-11"	

Class X Concrete	Cu. Yds	74.9
Reinforcement Bars	Lbs.	11840
Concrete Piles	Lin. Ft.	840

\*The length corresponds to vertical height.

PIER 1  
 NORTH BOUND LANES  
 ILL. RT. 55 SEC. 54-G.VB  
 LOGAN COUNTY

**PILE DATA**  
 Type: Concrete  
 Capacity: 45 Tons  
 Est. Length: 60'  
 No. Required: 14

DESIGNED G.K. RAD.	EXAMINED	DATE
CHECKED D.A.R.	PASSED	1/30/2012
DRAWN S.E. LINDSEY	APPROVED	
CHECKED D.A.R.		

**FOR INFORMATION ONLY**