

# INDEX OF SHEETS

SHEET NO.	DESCRIPTION
1	COVER SHEET
2	GENERAL NOTES
3	SUMMARY OF QUANTITIES
4	SCHEDULES OF QUANTITIES
5-6	ROADWAY PLANS
7	INTERSECTION DETAILS
8-12	LIGHTING PLANS

## STANDARDS

001006	701701-08
424001-07	701801-05
424011-01	701901-02
606001-05	780001-03
701001-02	825001-01
701006-04	830006-01
701501-06	836001-02
701606-08	

### HIGHWAY CLASSIFICATION

F.A.P. ROUTE 502 (GARDNER EXPY)

CLASSIFICATION: OTHER ARTERIAL

ADT: 5,100 (2011)

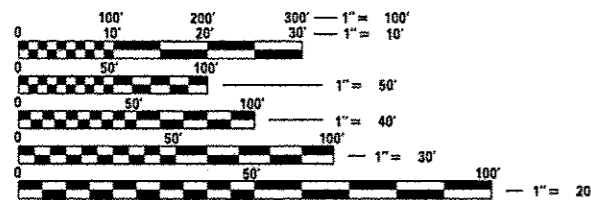
PV = 4,140, 81.0% (2011)

ADT: 6,900 (2031)

SU = 400, 8.0%

DESIGN SPEED: 45 MPH

MU = 560, 11.0%



FULL SIZE PLANS HAVE BEEN PREPARED USING STANDARD ENGINEERING SCALES. REDUCED SIZED PLANS WILL NOT CONFORM TO STANDARD SCALES. IN MAKING MEASUREMENTS ON REDUCED PLANS, THE ABOVE SCALES MAY BE USED.

J.U.L.I.E.  
JOINT UTILITY LOCATION INFORMATION FOR EXCAVATION  
1-800-892-0123  
OR 811

PROJECT ENGINEER: JEFF MYERS (217)782-4761  
PROJECT MANAGER: BILAL HUSSEIN (217)524-7042

CONTRACT NO. 72G03

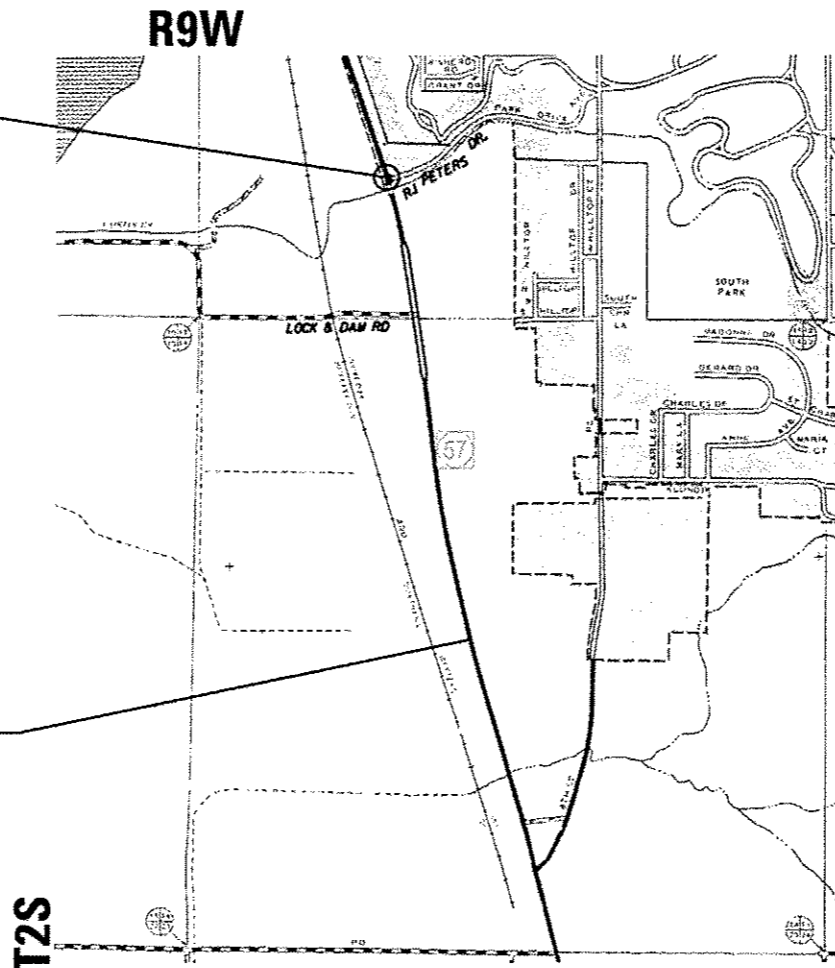
# STATE OF ILLINOIS DEPARTMENT OF TRANSPORTATION DIVISION OF HIGHWAYS PROPOSED HIGHWAY PLANS

FAP ROUTE 502 (IL 57)  
SECTION 53 L  
PROJECT HSIP-0502(016)  
ROADWAY LIGHTING  
ADAMS COUNTY

C-96-036-13

LIMITS OF IMPROVEMENT  
IL 57 & RJ PETERS DR.

LIMITS OF IMPROVEMENT  
ENDS AT STA. 114+10



F.A.P. RTE.	SECTION	COUNTY	TOTAL SHEETS	SHEET NO.
502	53 L	ADAMS	12	1
		ILLINOIS	CONTRACT NO. 72G03	

D-96-036-13



LOCATION OF SECTION INDICATED THUS: - [black rectangle] -

STATE OF ILLINOIS  
DEPARTMENT OF TRANSPORTATION  
DIVISION OF HIGHWAYS

SUBMITTED March 22 2013  
Roy D. Dukat  
DEPUTY DIRECTOR OF HIGHWAYS, REGION ENGINEER

April 26 2013  
John D. Baranzelli, PE.  
ENGINEER OF DESIGN AND ENVIRONMENT

April 26 2013  
Omair Osman, PE, LE  
DIRECTOR OF HIGHWAYS, CHIEF ENGINEER

PRINTED BY THE AUTHORITY  
OF THE STATE OF ILLINOIS