

**INDEX OF SHEETS**

SHEET NO.	DESCRIPTION
1	COVER SHEET
2	GENERAL NOTES
3	SUMMARY OF QUANTITIES
4	SCHEDULES OF QUANTITIES
5-6	ROADWAY PLANS
7	INTERSECTION DETAILS
8-12	LIGHTING PLANS

**STANDARDS**

001006	701701-08
424001-07	701801-05
424011-01	701901-02
606001-05	780001-03
701001-02	825001-01
701006-04	830006-01
701501-06	836001-02
701606-08	

**HIGHWAY CLASSIFICATION**

F.A.P. ROUTE 502 (GARDNER EXPY)

CLASSIFICATION: OTHER ARTERIAL

ADT: 5,100 (2011)

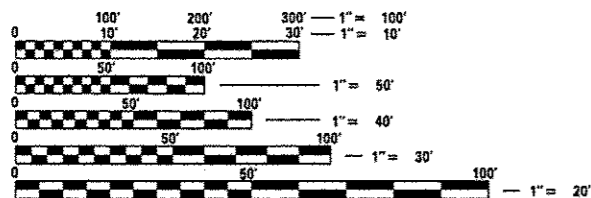
PV = 4,140, 81.0% (2011)

ADT: 6,900 (2031)

SU = 400, 8.0%

DESIGN SPEED: 45 MPH

MU = 560, 11.0%



FULL SIZE PLANS HAVE BEEN PREPARED USING STANDARD ENGINEERING SCALES. REDUCED SIZED PLANS WILL NOT CONFORM TO STANDARD SCALES. IN MAKING MEASUREMENTS ON REDUCED PLANS, THE ABOVE SCALES MAY BE USED.

J.U.L.I.E.  
JOINT UTILITY LOCATION INFORMATION FOR EXCAVATION  
1-800-892-0123  
OR 811

PROJECT ENGINEER: JEFF MYERS (217)782-4761  
PROJECT MANAGER: BILAL HUSSEIN (217)524-7042

CONTRACT NO. 72G03

STATE OF ILLINOIS  
DEPARTMENT OF TRANSPORTATION  
DIVISION OF HIGHWAYS

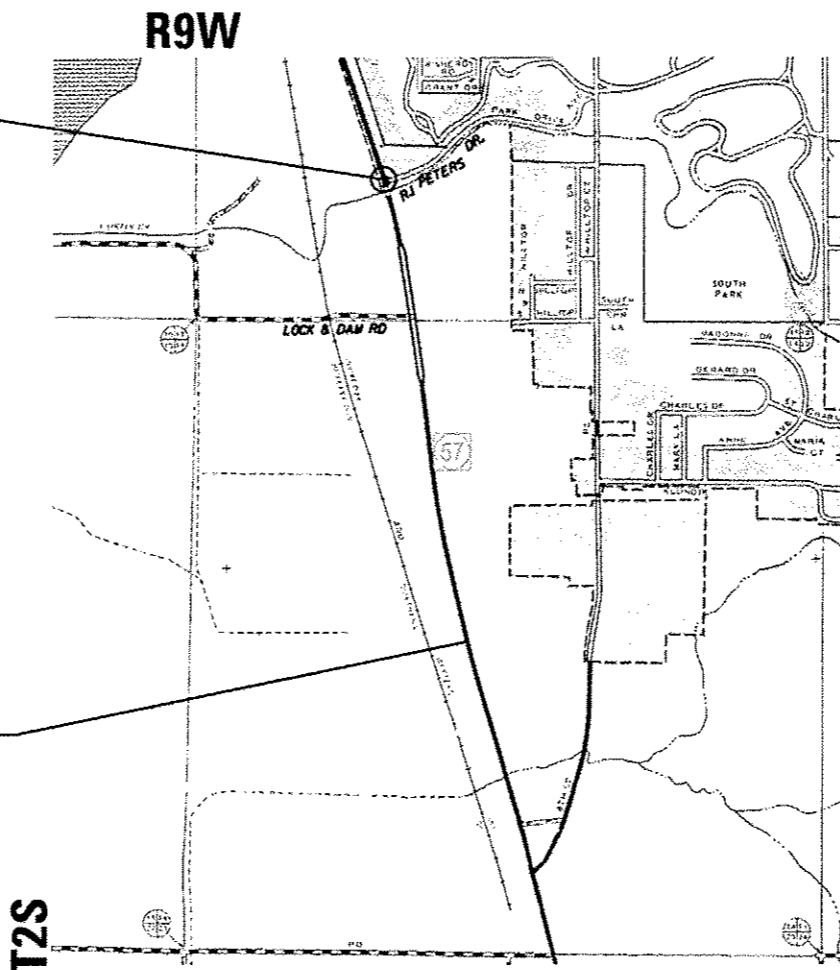
**PROPOSED  
HIGHWAY PLANS**

FAP ROUTE 502 (IL 57)  
SECTION 53 L  
PROJECT HSIP-0502(016)  
ROADWAY LIGHTING  
ADAMS COUNTY

C-96-036-13

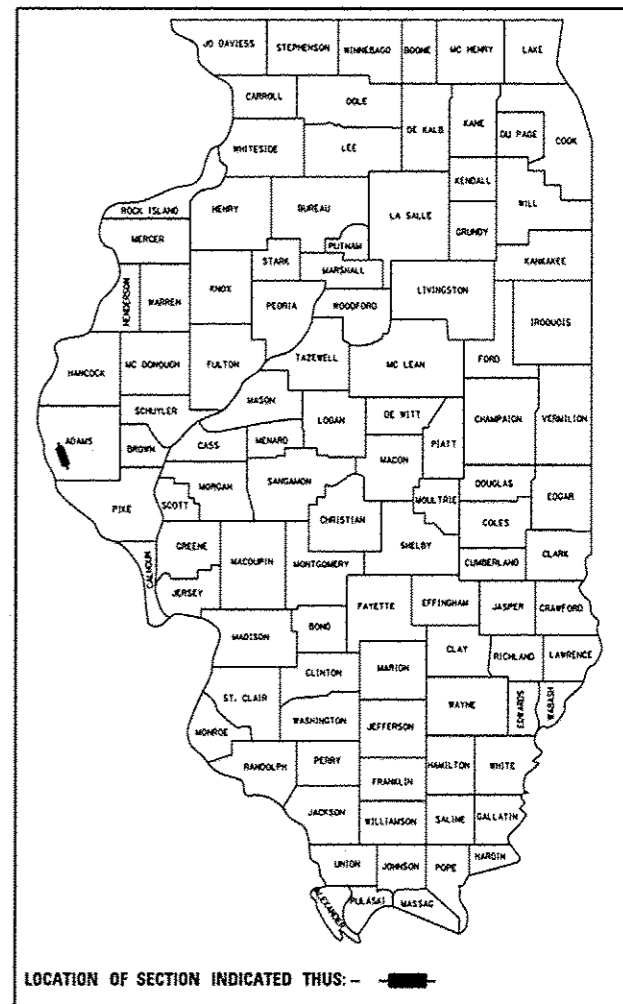
LIMITS OF IMPROVEMENT  
IL 57 & RJ PETERS DR.

LIMITS OF IMPROVEMENT  
ENDS AT STA. 114+10



F.A.P. RTE.	SECTION	COUNTY	TOTAL SHEETS	SHEET NO.
502	53 L	ADAMS	12	1
		ILLINOIS	CONTRACT NO. 72G03	

D-96-036-13



STATE OF ILLINOIS  
DEPARTMENT OF TRANSPORTATION  
DIVISION OF HIGHWAYS

SUBMITTED March 22 2013  
Roy D. Dukat  
DEPUTY DIRECTOR OF HIGHWAYS, REGION ENGINEER

April 26 2013  
John D. Baranzelli, PE.  
ENGINEER OF DESIGN AND ENVIRONMENT

April 26 2013  
Omur Osman, PE, EIT  
DIRECTOR OF HIGHWAYS, CHIEF ENGINEER

PRINTED BY THE AUTHORITY  
OF THE STATE OF ILLINOIS

**GENERAL NOTES:**

1. ALL PROPOSED LIGHTING UNITS SHALL BE LABELED ACCORDING TO THE STANDARD SPECIFICATIONS, WITH POLE NUMBERS ATTACHED WITH STAINLESS STEEL BANDING. LIGHTING UNIT NUMBERING SHALL BE AS DIRECTED BY THE ENGINEER.
2. CONTRACTOR SHALL BE RESPONSIBLE TO COORDINATE ELECTRICAL WORK WITH OTHER TRADES.
3. LIGHT POLE FOUNDATIONS SHALL BE INSTALLED PLUMB AND FLUSH WITH THE PROPOSED GRADE AND SHALL MEET THE HEIGHT REQUIREMENTS OF ARTICLE 836.03 OF THE STANDARD SPECIFICATIONS. AFTER UNIT DUCT IS INSTALLED, FOUNDATIONS SHALL BE FILLED WITH FINE AGGREGATE ACCORDING TO ARTICLE 836.03. WASHERS USED TO INSTALL THE POLE SHALL BE LARGE ENOUGH TO FULLY COVER THE SLOTTED HOLES IN THE POLE BASE PLATE. THE VOIDS ON THE BOTTOM SIDE OF THE ALUMINUM POLE BASE MUST BE SEALED FROM RODENT ENTRY WITH STAINLESS STEEL SCREEN.
4. CONTRACTOR SHALL INSTALL LIGHT POLES AT THE LOCATIONS INDICATED ON THE PLANS, MAINTAINING ADEQUATE CLEARANCE FROM UTILITY LINES. CONTRACTOR SHALL BE RESPONSIBLE TO VERIFY CLEARANCES PER THE NATIONAL ELECTRICAL SAFETY CODE AND/OR THE REQUIREMENTS OF THE UTILITY COMPANIES. THE CONTRACTOR SHALL NOTIFY THE ENGINEER OF ALL CONFLICTS BETWEEN PROPOSED LIGHTING POLE LOCATIONS AND UTILITY LINES. THE LOCATION OF BURIED AND ABOVE GROUND UTILITIES SHOWN ARE APPROXIMATE AND ARE SHOWN FOR INFORMATION ONLY. REROUTING, DISCONNECTION, RELOCATION, PROTECTION ETC., OF ANY UTILITIES MUST BE COORDINATED BETWEEN THE CONTRACTOR, UTILITY COMPANY, AND OWNER. THE CONTRACTOR SHALL VERIFY THE EXACT LOCATION OF ALL UNDERGROUND UTILITIES PRIOR TO CONSTRUCTION.
5. THE CONTRACTOR IS RESPONSIBLE FOR UNCOVERING OR HAND DIGGING AROUND UTILITIES AS NECESSARY. THE COST OF THIS WORK IS TO BE INCLUDED WITH THE APPLICABLE UNIT DUCT OR UNDERGROUND CONDUIT PAY ITEM.
6. UNDERGROUND CONDUIT, COILABLE NONMETALLIC CONDUIT, 2 1/2" DIA. SHALL BE SCHEDULE 80 AS NOTED IN THE PLANS.
7. THE CONTRACTOR SHALL FURNISH AND INSTALL A CONCRETE WORK PAD IN FRONT OF THE LIGHTING CONTROLLER PER SECTION 825 OF THE STANDARD SPECIFICATIONS.
8. INSTALL HORIZONTAL MOUNT LUMINAIRES PERPENDICULAR TO THE CENTERLINE OF THE ROADWAY AS REQUIRED BY ARTICLE 821.04 OF THE STANDARD SPECIFICATIONS.
9. NO POLE TO BE INSTALLED IN THE FLOWLINE OF DITCH. POLE SETBACK TO BE INCREASED IF NECESSARY AS DIRECTED BY THE ENGINEER.
10. ANY REFERENCE TO A STANDARD IN THE PLAN SHALL BE INTERPRETED TO MEAN THE EDITION, AS INDICATED BY THE SUB-NUMBER LISTED ON THE COVER SHEET, OR THE COPY OF THE STANDARD INCLUDED IN THE PLANS

**COMMITMENTS:**

1. THE FIELD/RESIDENT ENGINEER SHALL CONTACT STUDIES AND PLANS COVERING ANY MAJOR PLAN CHANGES TO MAKE SURE NO PREVIOUS COMMITMENTS (NOT LISTED) WERE MADE AFFECTING THE DESIGN, AND TO ALLOW IMPROVED DESIGN FOR THE FUTURE.

<b>DISTRICT SIX</b>	
EXAMINED <u>3/20</u> <u>20</u> <u>13</u> <i>Keith M. Bergman</i>	OPERATIONS ENGINEER
EXAMINED <u>MARCH 21</u> <u>20</u> <u>13</u> <i>John L. La...</i>	PROJECT IMPLEMENTATION ENGINEER
EXAMINED <u>March 22</u> <u>20</u> <u>13</u> <i>ARMU</i>	PROGRAM DEVELOPMENT ENGINEER

FILE NAME *	USER NAME * hussainba	DESIGNED -	REVISED -	<b>STATE OF ILLINOIS DEPARTMENT OF TRANSPORTATION</b>	<b>GENERAL NOTES</b>	F.A.P RTE.	SECTION	COUNTY	TOTAL SHEETS	SHEET NO.
0:\pwork\p\dot\hussainba\0333842\06	xxx-wh-gennote.dgn	DRAWN -	REVISED -			502	53 L	ADAMS	12	2
Default	PLOT SCALE * 48.7729' / 1in.	CHECKED -	REVISED -					CONTRACT NO. 72G03		
	PLOT DATE * Mar-12-2013 06:48:53AM	DATE -	REVISED -			SCALE:	SHEET	OF	SHEETS	STA.

CODE NO.	ITEM	UNIT	TOTAL QUANTITY	CONSTR. CODE
				90% FED, 10 STATE
				ROADWAY
				0021
42400100	PORTLAND CEMENT CONCRETE SIDEWALK 4 INCH	SO FT	376.6	376.6
42400800	DETECTABLE WARNINGS	SO FT	30	30
44000500	COMBINATION CURB AND GUTTER REMOVAL	FOOT	21	21
44000600	SIDEWALK REMOVAL	SO FT	387	387
60603800	COMBINATION CONCRETE CURB AND GUTTER, TYPE B-6.12	FOOT	36	36
67100100	MOBILIZATION	L SUM	1	1
70102620	TRAFFIC CONTROL AND PROTECTION, STANDARD 701501	L SUM	1	1
70102625	TRAFFIC CONTROL AND PROTECTION, STANDARD 701606	L SUM	1	1
70102635	TRAFFIC CONTROL AND PROTECTION, STANDARD 701701	L SUM	1	1
70102640	TRAFFIC CONTROL AND PROTECTION, STANDARD 701801	L SUM	1	1
78009006	MODIFIED URETHANE PAVEMENT MARKING - LINE 6"	FOOT	381	381
78009012	MODIFIED URETHANE PAVEMENT MARKING - LINE 12"	FOOT	612	612
80400100	ELECTRIC SERVICE INSTALLATION	EACH	2	2
81028760	UNDERGROUND CONDUIT, COILABLE NONMETALLIC CONDUIT, 2 1/2" DIA.	FOOT	230	230

CODE NO.	ITEM	UNIT	TOTAL QUANTITY	CONSTR. CODE
				90% FED, 10 STATE
				ROADWAY
				0021
81603000	UNIT DUCT, 600V, 2-1C NO. 8, 1/C NO. 8 GROUND, (XLP-TYPE USE), 3/4" DIA. POLYETHYLENE	FOOT	999	999
82102250	LUMINAIRE, SODIUM VAPOR, HORIZONTAL MOUNT, 250 WATT	EACH	6	6
82500300	LIGHTING CONTROLLER, POLE MOUNTED, 240VOLT, 30AMP	EACH	2	2
83003600	LIGHT POLE, ALUMINUM, 45 FT. M. H., 15 FT. DAVIT ARM	EACH	6	6
83600355	LIGHT POLE FOUNDATION, METAL, 15" BOLT CIRCLE, 8" X 6'	EACH	6	6
83800650	BREAKAWAY DEVICE, COUPLING WITH STAINLESS STEEL SCREEN	EACH	20	20

FILE NAME =	USER NAME = sparkgv	DESIGNED -	REVISED -	<b>STATE OF ILLINOIS DEPARTMENT OF TRANSPORTATION</b>	<b>SUMMARY OF QUANTITIES</b>				F.A.P	SECTION	COUNTY	TOTAL	SHEET
ct:\pwwork\pvidot\sparkgv\d0333842\06	***ht-500.dgn	DRAWN -	REVISED -						RT.	53 L	ADAMS	12	3
Default	PLOT SCALE = 100.0000' / 1"	CHECKED -	REVISED -		SCALE:	SHEET	OF	SHEETS	STA.	TO	STA.	CONTRACT NO. 72G03	
	PLOT DATE = Mon-22-2013 11:49:48AM	DATE -	REVISED -		ILLINOIS FED. AID PROJECT								

PORTLAND CEMENT CONCRETE SIDEWALK 4 INCH	
LOCATION	LENGTH (SQ FT)
NORTHEAST CORNER OF IL57/RJ PETERS DR	221.0
SOUTHEAST CORNER OF IL57/RJ PETERS DR	155.6
TOTAL	376.6

SIDEWALK REMOVAL	
LOCATION	LENGTH (SQ FT)
NORTHEAST CORNER OF IL57/RJ PETERS DR	180.0
SOUTHEAST CORNER OF IL57/RJ PETERS DR	207.0
TOTAL	387.0

COMBINATION CURB AND GUTTER REMOVAL	
LOCATION	LENGTH (FOOT)
NORTHEAST CORNER OF IL57/RJ PETERS DR	11.0
SOUTHEAST CORNER OF IL57/RJ PETERS DR	10.0
TOTAL	21.0

DETECTABLE WARNINGS	
LOCATION	LENGTH (SQ FT)
NORTHEAST CORNER OF IL57/RJ PETERS DR	20.0
SOUTHEAST CORNER OF IL57/RJ PETERS DR	10.0
TOTAL	30.0

COMBINATION CONCRETE CURB AND GUTTER, TYPE B-6.12	
LOCATION	LENGTH (FOOT)
NORTHEAST CORNER OF IL57/RJ PETERS DR	26.0
SOUTHEAST CORNER OF IL57/RJ PETERS DR	10.0
TOTAL	36.0

MODIFIED URETHANE PAVEMENT MARKING - LINE 6"			
LOCATION	STATION	COLOR	LENGTH (FOOT)
NORTH CROSSWALK	81+95	SOLID WHITE	124.0
EAST CROSSWALK	82+72	SOLID WHITE	125.0
SOUTH CROSSWALK	86+41	SOLID WHITE	132.0
TOTAL			381.0

MODIFIED URETHANE PAVEMENT MARKING - LINE 12"			
LOCATION	STATION	COLOR/DISCRPTION	LENGTH (FOOT)
NORTH CROSSWALK	81+95	SOLID WHITE @ 45°	238.0
EAST CROSSWALK	82+72	SOLID WHITE @ 45°	177.0
SOUTH CROSSWALK	86+41	SOLID WHITE @ 45°	198.0
TOTAL			613.0



EXIST. CURVE 122  
 PI STA. = 82+93.11  
 $\Delta = 6^\circ 58' 20''$  (RT)  
 $D = 0^\circ 40' 13''$   
 $R = 8,547.50'$   
 $T = 520.70'$   
 $L = 1,040.11'$   
 $E = 15.85'$   
 $\theta =$  ----  
 $T.R. =$  ----  
 $S.E. RUN =$  ----  
 $P.C. STA. = 77+72.41$   
 $P.T. STA. = 88+12.52$

SIDEWALK REMOVAL  
 COMB. CURB & GUTTER REMOVAL  
 PROP. PCC SIDEWALK 4"  
 PROP CC&G, TY. B-6.12

SIDEWALK REMOVAL  
 COMB. CURB & GUTTER REMOVAL  
 PROP. PCC SIDEWALK 4"  
 PROP CC&G, TY. B-6.12

PROP. CONCRETE CURB

PROP CURB HEIGHT TRANSITION

RU PETERS DR

RU PETERS DR

12" RCP

12" RCP

80+00.00

81+00

IL 57

82

10+00

83

85+00

MATCH LINE STA. 86+00.00

PROPOSED MODIFIED URETHANE  
 PAVEMENT MARKING-LINE 6"

PROPOSED MODIFIED URETHANE  
 PAVEMENT MARKING-LINE 12"

FILE NAME *	USER NAME * sparkag*	DESIGNED -	REVISED -
c:\p\work\p\dot\sparkag\0333042\7203-Roadway.dgn		DRAWN -	REVISED -
	PLOT SCALE * 40.0000' / in.	CHECKED -	REVISED -
Default	PLOT DATE * Mar-22-2013 11:58:46AM	DATE -	REVISED -

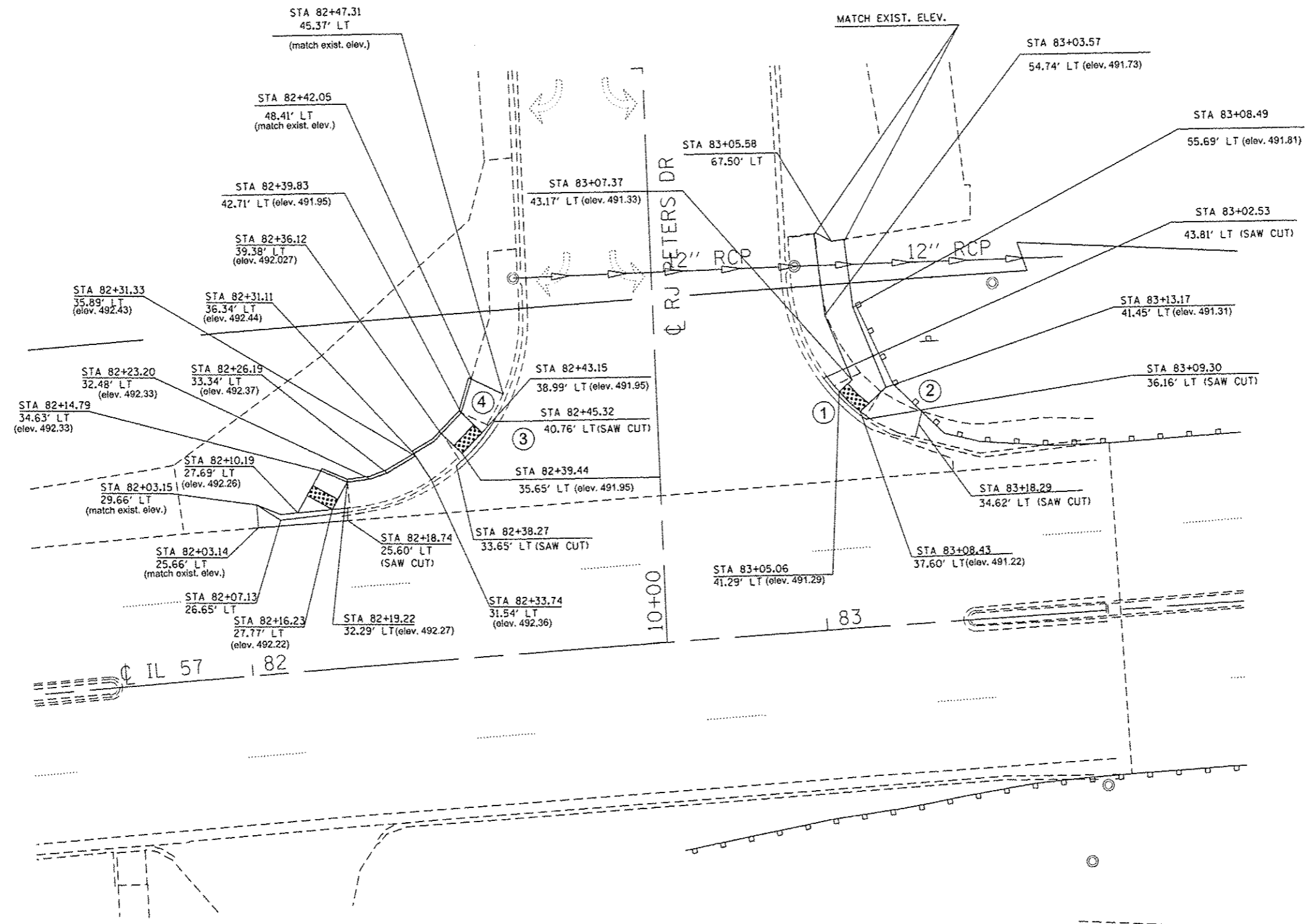
STATE OF ILLINOIS  
 DEPARTMENT OF TRANSPORTATION

ROADWAY PLANS

SCALE: SHEET OF SHEETS STA. TO STA.

F.A.P. RTE.	SECTION	COUNTY	TOTAL SHEETS	SHEET NO.
502	53 L	ADAMS	12	5
CONTRACT NO. 72G03				
ILLINOIS FED. AID PROJECT				










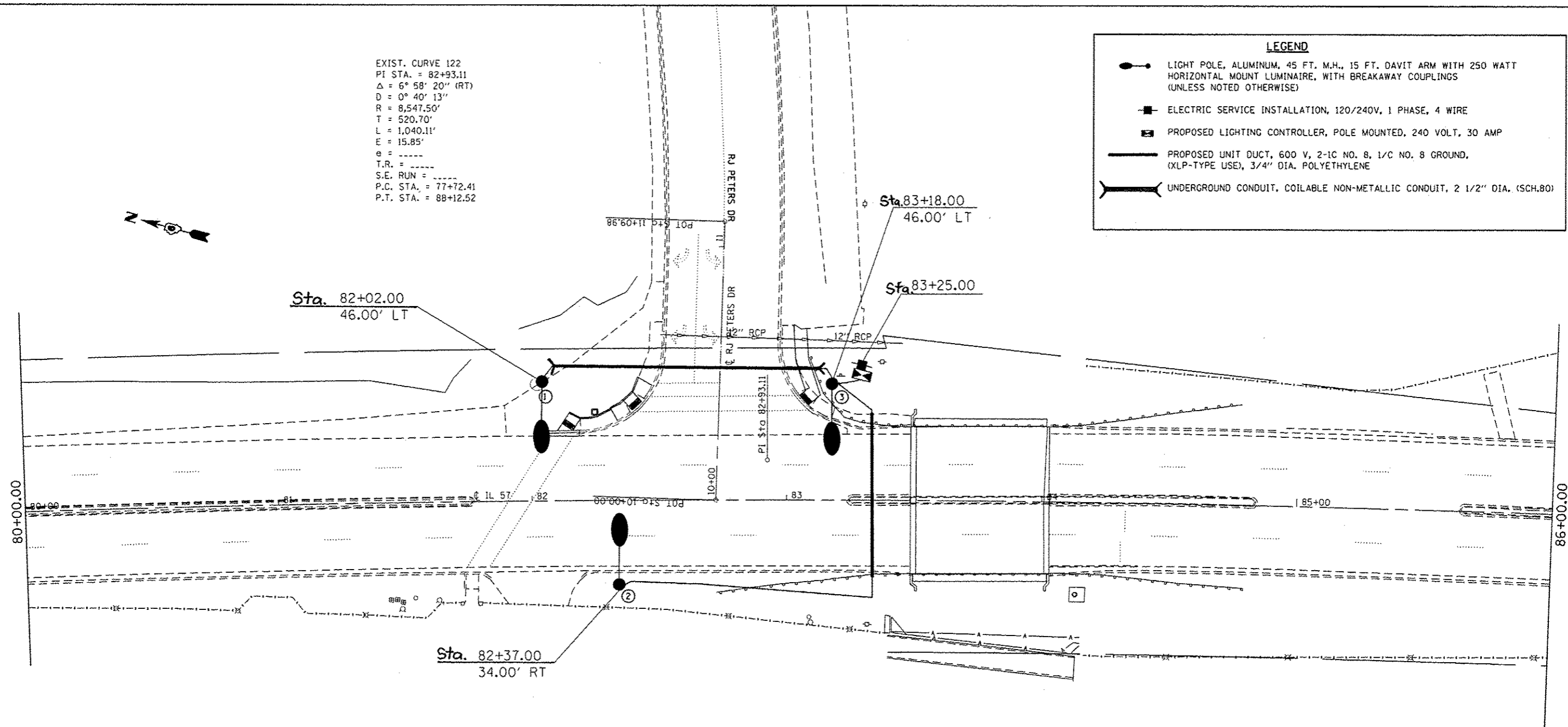
- ① REMOVE & REPLACE CC&G BETWEEN STA 83+02.53 (43.81 LT) & STA 83+09.3 (36.16' LT)
- ② REMOVE EXISTING SIDEWALK BETWEEN STA 83+18.29 (34.62 LT) & STA 83+05.58 (67.50' LT)
- ③ REMOVE & REPLACE CC&G BETWEEN STA 82+38.27 (33.65 LT) & STA 82+45.32 (40.76' LT)
- ④ REMOVE & REPLACE SIDEWALK BETWEEN STA 82+33.74 & STA 82+19.22

FILE NAME * c:\pwork\pvidot\sparkg\10033042\Int	USER NAME * sparkg	DESIGNED -	REVISED -	<b>STATE OF ILLINOIS DEPARTMENT OF TRANSPORTATION</b>	<b>INTERSECTION DETAILS</b>		F.A.P. RTE.	SECTION	COUNTY	TOTAL SHEETS	SHEET NO.
	reaction Detail.dgn	DRAWN -	REVISED -				502	53 L	ADAMS	12	7
Default	PLOT SCALE * 20.0000' / in.	CHECKED -	REVISED -	SCALE: _____	SHEET _____ OF _____ SHEETS	STA. _____ TO STA. _____	CONTRACT NO. 72G03				
	PLOT DATE * Mar-22-2013 12:38:15PM	DATE -	REVISED -	ILLINOIS FED. AID PROJECT							

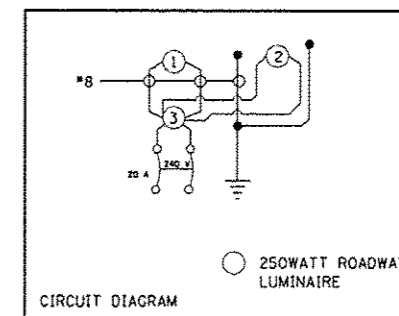
EXIST. CURVE 122  
 PI STA. = 82+93.11  
 $\Delta = 6^\circ 58' 20''$  (RT)  
 $D = 0^\circ 40' 13''$   
 $R = 8,547.50'$   
 $T = 520.70'$   
 $L = 1,040.11'$   
 $E = 15.85'$   
 $\theta =$  -----  
 T.R. = -----  
 S.E. RUN = -----  
 P.C. STA. = 77+72.41  
 P.T. STA. = 88+12.52

**LEGEND**

-  LIGHT POLE, ALUMINUM, 45 FT. M.H., 15 FT. DAVIT ARM WITH 250 WATT HORIZONTAL MOUNT LUMINAIRE, WITH BREAKAWAY COUPLINGS (UNLESS NOTED OTHERWISE)
-  ELECTRIC SERVICE INSTALLATION, 120/240V, 1 PHASE, 4 WIRE
-  PROPOSED LIGHTING CONTROLLER, POLE MOUNTED, 240 VOLT, 30 AMP
-  PROPOSED UNIT DUCT, 600 V, 2-1C NO. 8, 1/C NO. 8 GROUND, (XLP-TYPE USE), 3/4" DIA. POLYETHYLENE
-  UNDERGROUND CONDUIT, COILABLE NON-METALLIC CONDUIT, 2 1/2" DIA. (SCH.80)



BILL OF MATERIALS - THIS SHEET			
PAY ITEM	DESCRIPTION	UNIT	QUANTITY
80400100	ELECTRIC SERVICE INSTALLATION	EACH	1
81028760	UNDERGROUND CONDUIT, COILABLE NONMETALLIC CONDUIT, 2 1/2" DIA.	FOOT	158
81603000	UNIT DUCT, 600V, 2-1C NO. 8, 1/C NO. 8 GROUND, (XLP-TYPE USE), 3/4" DIA.	FOOT	350
82102250	LUMINAIRE, SODIUM VAPOR, HORIZONTAL MOUNT, 250 WATT	EACH	3
82500300	LIGHTING CONTROLLER, POLE MOUNTED, 240VOLT, 30AMP	EACH	1
83003600	LIGHT POLE, ALUMINUM, 45 FT. M.H., 15 FT. DAVIT ARM	EACH	3
83600355	LIGHT POLE FOUNDATION, METAL, 15" BOLT CIRCLE, 8" X 6"	EACH	3
83800650	BREAKAWAY DEVICE, COUPLING WITH STAINLESS STEEL SCREEN	EACH	8



NOTE:  
 1. LIGHTING UNIT 3 SHALL NOT BE INSTALLED WITH BREAKAWAY COUPLINGS

FILE NAME =	USER NAME = sparksgw	DESIGNED -	REVISED -
c:\pwork\pvidot\sparksgw\d8333842\7203-Lighting-SHT.dgn		DRAWN -	REVISED -
		CHECKED -	REVISED -
Default	PLOT DATE = Mar-22-2013 11:50:58AM	DATE -	REVISED -

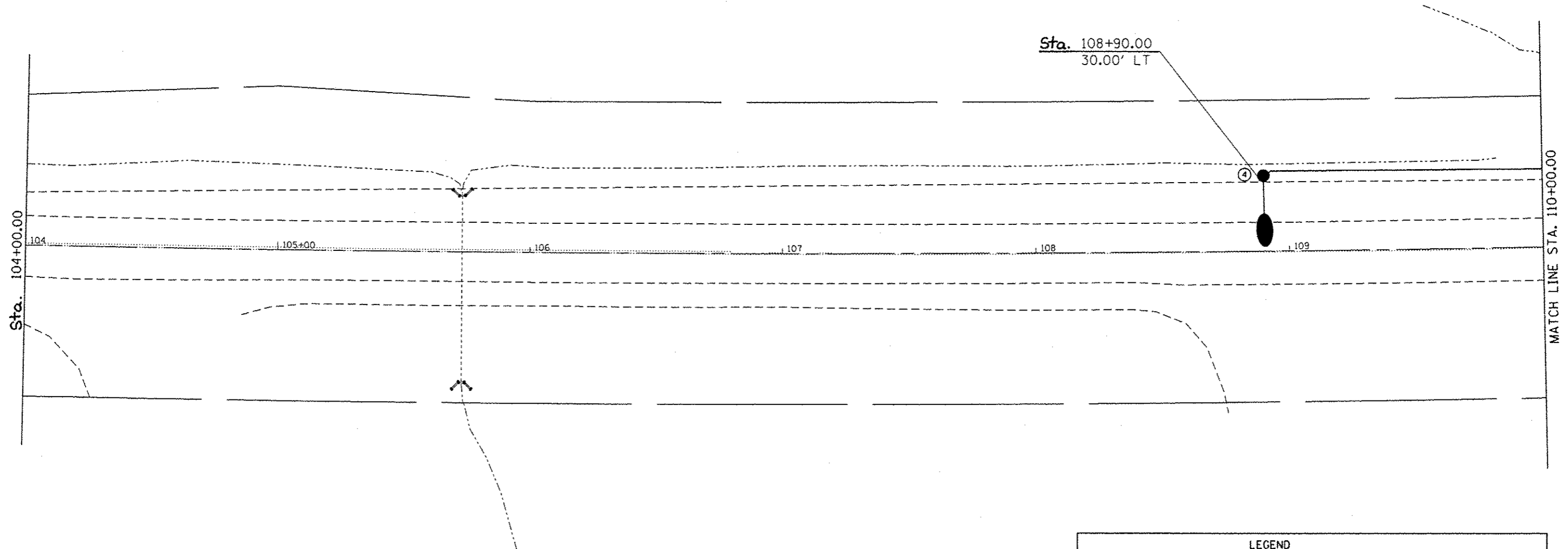
STATE OF ILLINOIS  
 DEPARTMENT OF TRANSPORTATION

LIGHTING PLAN

SCALE: SHEET OF SHEETS STA. TO STA.

F.A.P. RTE.	SECTION	COUNTY	TOTAL SHEETS	SHEET NO.
502	53 L	ADAMS	12	8
CONTRACT NO. 72G03			ILLINOIS FED. AID PROJECT	



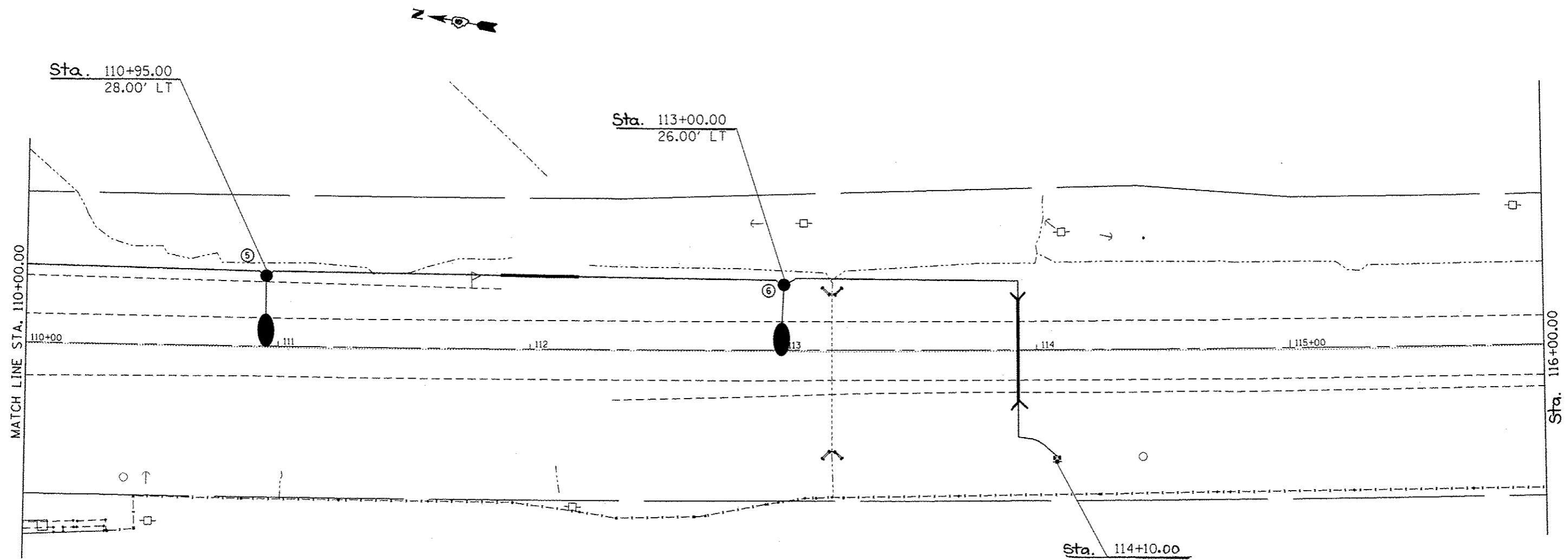


**NOTE:**  
SEE CIRCUIT DIAGRAM ON  
PLAN SHEET 10.

BILL OF MATERIALS - THIS SHEET			
PAY ITEM	DESCRIPTION	UNIT	QUANTITY
81603000	UNIT DUCT, 600V, 2-1C NO. 8, 1/C NO. 8 GROUND, (XLP-TYPE USE), 3/4" DIA.	FOOT	149
82102250	LUMINAIRE, SODIUM VAPOR, HORIZONTAL MOUNT, 250 WATT	EACH	1
83003600	LIGHT POLE, ALUMINUM, 45 FT. M. H., 15 FT. DAVIT ARM	EACH	1
83600355	LIGHT POLE FOUNDATION, METAL, 15" BOLT CIRCLE, 8" X 6"	EACH	1
83800650	BREAKAWAY DEVICE, COUPLING WITH STAINLESS STEEL SCREEN	EACH	4

**LEGEND**

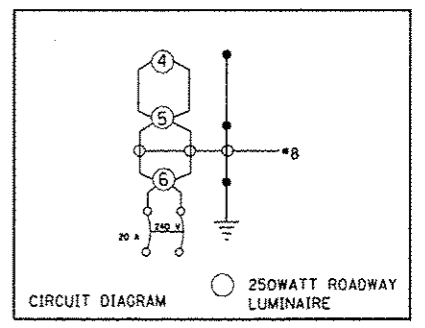
- LIGHT POLE, ALUMINUM, 45 FT. M.H., 15 FT. DAVIT ARM WITH 250 WATT HORIZONTAL MOUNT LUMINAIRE, WITH BREAKAWAY COUPLINGS (UNLESS NOTED OTHERWISE)
- ELECTRIC SERVICE INSTALLATION, 120/240V, 1 PHASE, 4 WIRE
- PROPOSED LIGHTING CONTROLLER, POLE MOUNTED, 240 VOLT, 30 AMP
- PROPOSED UNIT DUCT, 600 V, 2-1C NO. 8, 1/C NO. 8 GROUND, (XLP-TYPE USE), 3/4" DIA. POLYETHYLENE
- UNDERGROUND CONDUIT, COILABLE NON-METALLIC CONDUIT, 2 1/2" DIA. (SCH.80)



**LEGEND**

- LIGHT POLE, ALUMINUM, 45 FT. M.H., 15 FT. DAVIT ARM WITH 250 WATT HORIZONTAL MOUNT LUMINAIRE, WITH BREAKAWAY COUPLINGS (UNLESS NOTED OTHERWISE)
- ELECTRIC SERVICE INSTALLATION, 120/240V, 1 PHASE, 4 WIRE
- PROPOSED LIGHTING CONTROLLER, POLE MOUNTED, 240 VOLT, 30 AMP
- PROPOSED UNIT DUCT, 600 V, 2-1C NO. 8, 1/C NO. 8 GROUND, (XLP-TYPE USE), 3/4" DIA. POLYETHYLENE
- UNDERGROUND CONDUIT, COILABLE NON-METALLIC CONDUIT, 2 1/2" DIA. (SCH.80)

BILL OF MATERIALS - THIS SHEET			
PAY ITEM	DESCRIPTION	UNIT	QUANTITY
80400100	ELECTRIC SERVICE INSTALLATION	EACH	1
81028760	UNDERGROUND CONDUIT, COILABLE NONMETALLIC CONDUIT, 2 1/2" DIA.	FOOT	72
81603000	UNIT DUCT, 600V, 2-1C NO. 8, 1/C NO. 8 GROUND, (XLP-TYPE USE), 3/4" DIA.	FOOT	500
82102250	LUMINAIRE, SODIUM VAPOR, HORIZONTAL MOUNT, 250 WATT	EACH	2
82500300	LIGHTING CONTROLLER, POLE MOUNTED, 240VOLT, 30AMP	EACH	1
83003600	LIGHT POLE, ALUMINUM, 45 FT. M.H., 15 FT. DAVIT ARM	EACH	2
83600355	LIGHT POLE FOUNDATION, METAL, 15" BOLT CIRCLE, 8" X 6'	EACH	2
83800650	BREAKAWAY DEVICE, COUPLING WITH STAINLESS STEEL SCREEN	EACH	8



FILE NAME =	USER NAME = sparkg*	DESIGNED -	REVISED -
c:\p\work\p\dot\sparkg\ld0333842\7203-Lighting-SHT.dgn		DRAWN -	REVISED -
		CHECKED -	REVISED -
Default	PLOT DATE = Mar-22-2013 12:29:24PM	DATE -	REVISED -

**STATE OF ILLINOIS  
DEPARTMENT OF TRANSPORTATION**

**LIGHTING PLAN**

SCALE: \_\_\_\_\_ SHEET \_\_\_\_\_ OF \_\_\_\_\_ SHEETS STA. \_\_\_\_\_ TO STA. \_\_\_\_\_

F.A.P. RTE.	SECTION	COUNTY	TOTAL SHEETS	SHEET NO.
502	53 L	ADAMS	12	10
CONTRACT NO. 72603				
ILLINOIS FED. AID PROJECT				

**ILLINOIS DEPARTMENT OF TRANSPORTATION  
250W LUMINAIRE PERFORMANCE TABLE**

**GIVEN CONDITIONS**

<b>ROADWAY DATA:</b>	Pavement Width	<u>24 FT</u>
	Number Of Lanes (In Direction of Travel)	<u>2</u>
	Median Width	<u>N/A</u>
	IES Surface Classification	<u>R3</u>
	Q-Zero Value	<u>.07</u>
<b>LIGHT POLE DATA:</b>	Mounting Height	<u>45 FT</u>
	Mast Arm Length	<u>N/A</u>
	Pole Set-Back From Edge Of Pavement	<u>15 FT</u>
<b>LUMINAIRE DATA:</b>	Lamp Type	<u>HPS</u>
	Lamp Lumens	<u>28500</u>
	IES Vertical Distribution	<u>M</u>
	IES Control Of Distribution	<u>FC</u>
	IES Lateral Distribution	<u>3</u>
	Total Light Loss Factor	<u>0.684</u>
<b>LAYOUT DATA:</b>	Spacing	<u>160 FT</u>
	Configuration	<u>Single Side</u>
	Luminaire Overhang Over Edge Of Pavement Lane	<u>0 FT</u>

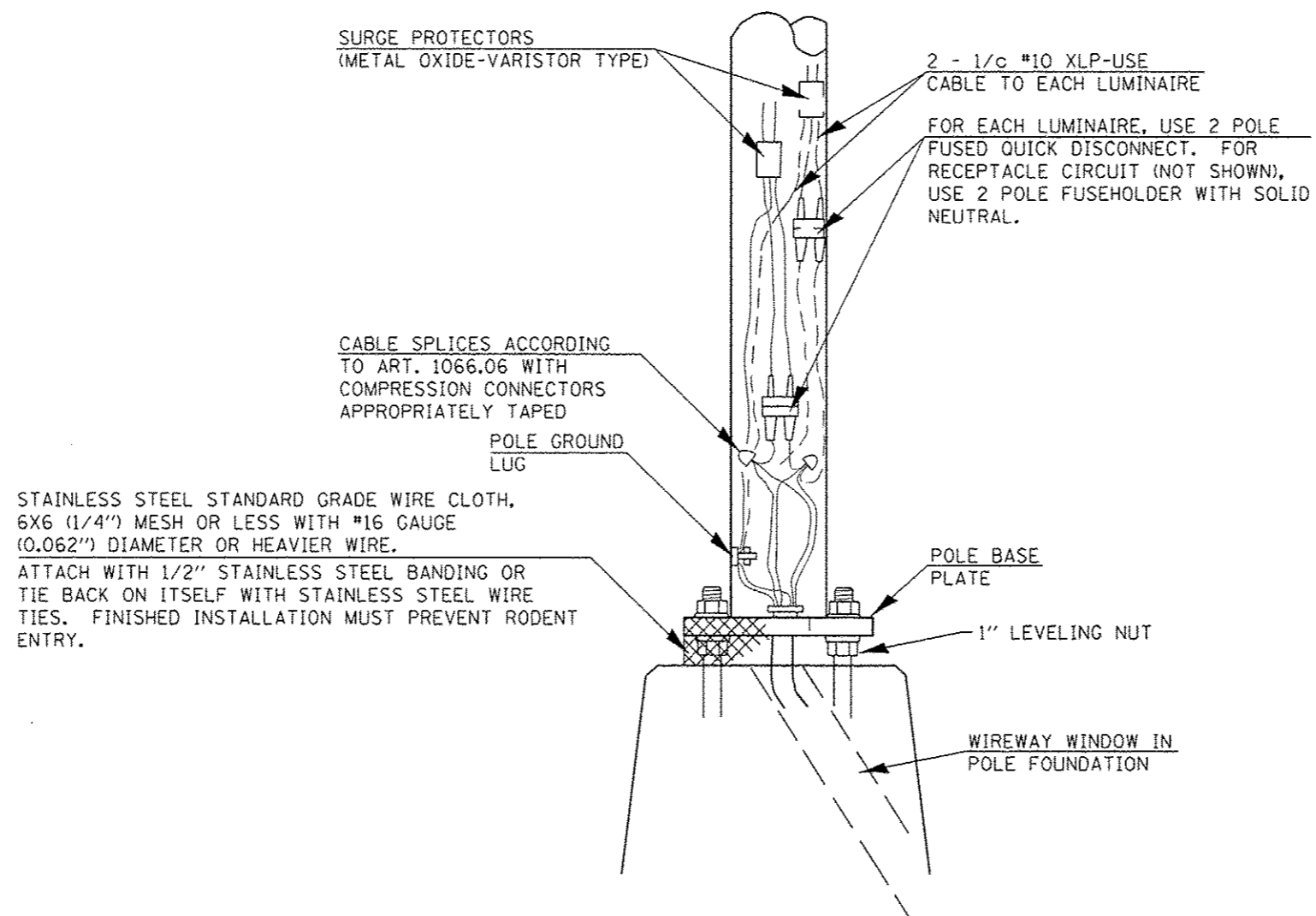
**NOTE:** Variations from the above specified IES distribution pattern may be requested and acceptance of variations will be subject to review by the Engineer based on how well the performance requirements are met.

**PERFORMANCE REQUIREMENTS**

**NOTE:** These performance requirements shall be the minimum acceptable standards of photometric performance for the luminaire, based on the given conditions listed above.

<b>ILLUMINATION:</b>	Average Horizontal Illumination, ( $E_{Ave}$ )	<u>0.9 Fc</u>
	Uniformity Ratio, ( $E_{Ave}/E_{Min}$ )	<u>3.0</u>
<b>LUMINANCE:</b>	Average Luminance: ( $L_{Ave}$ )	<u>0.6 Cd/m<sup>2</sup></u>
	Uniformity Ratios: ( $L_{Ave}/L_{Min}$ )	<u>3.5</u>
	( $L_{Max}/L_{Min}$ )	<u>6.0</u>
	Maximum Veiling Luminance Ratio: ( $L_v/L_{Ave}$ )	<u>0.30</u>

FILE NAME *	USER NAME * sparkag*	DESIGNED -	REVISED -	<b>STATE OF ILLINOIS DEPARTMENT OF TRANSPORTATION</b>	<b>LIGHTING PLANS</b>	F.A.P. RTE.	SECTION	COUNTY	TOTAL SHEETS	SHEET NO.	
c:\pw\work\pido\sparkag\ld8333842\06	xx-shl-gannate.dgn	DRAWN -	REVISED -			502	53L	ADAMS	12	11	
	PLOT SCALE * 40.0000 ' / in.	CHECKED -	REVISED -			CONTRACT NO. 72G03		ILLINOIS FED. AID PROJECT			
Default	PLOT DATE * May-22-2013 11:58:24M	DATE -	REVISED -			SCALE:	SHEET	OF	SHEETS	STA.	TO STA.



STAINLESS STEEL STANDARD GRADE WIRE CLOTH, 6X6 (1/4") MESH OR LESS WITH #16 GAUGE (0.062") DIAMETER OR HEAVIER WIRE. ATTACH WITH 1/2" STAINLESS STEEL BANDING OR TIE BACK ON ITSELF WITH STAINLESS STEEL WIRE TIES. FINISHED INSTALLATION MUST PREVENT RODENT ENTRY.

## WIRING DETAIL

(NO SCALE)

### GENERAL NOTES

ALL TAPED SPLICES SHALL USE 2 LAYERS OF ELECTRICAL TAPE OVER 3 LAYERS OF RUBBER TAPE AS REQUIRED BY THE STANDARD SPECIFICATIONS. COAT THE FINISHED TAPED SPLICE WITH BONDING COMPOUND.

ALL CABLE SPLICES SHALL BE TAPED UNLESS ANOTHER METHOD HAS BEEN SPECIFICALLY APPROVED BY THE ENGINEER.

FOR EXAMPLE PURPOSES, THE POLE IS SHOWN ON AN ANCHOR BASE. IF THE POLE IS REQUIRED TO BE SET ON A BREAKWAY BASE, CONSULT THE STANDARD SPECIFICATIONS.

ALL DIMENSIONS ARE IN MILLIMETERS (INCHES) UNLESS OTHERWISE SHOWN.

FILE NAME *	USER NAME * sparkgy	DESIGNED -	REVISED -	<b>STATE OF ILLINOIS DEPARTMENT OF TRANSPORTATION</b>	F.A.P. RTE.	SECTION	COUNTY	TOTAL SHEETS	SHEET NO.
cl:\pwork\pvidot\sparkgy\08333842\72093-Lighting-SHT.dgn		DRAWN -	REVISED -		502	53 L	ADAMS	12	12
PLOT SCALE * 32.0000' / in.		CHECKED -	REVISED -		CONTRACT NO. T2G03				
PLOT DATE * Mar-22-2013 11:50:58AM		DATE -	REVISED -		ILLINOIS FED. AID PROJECT				
					SCALE:	SHEET	OF	SHEETS	STA. TO STA.