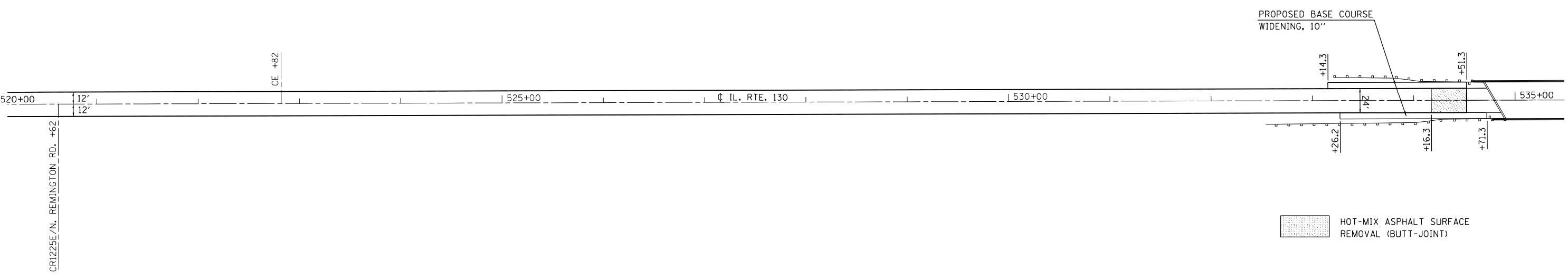
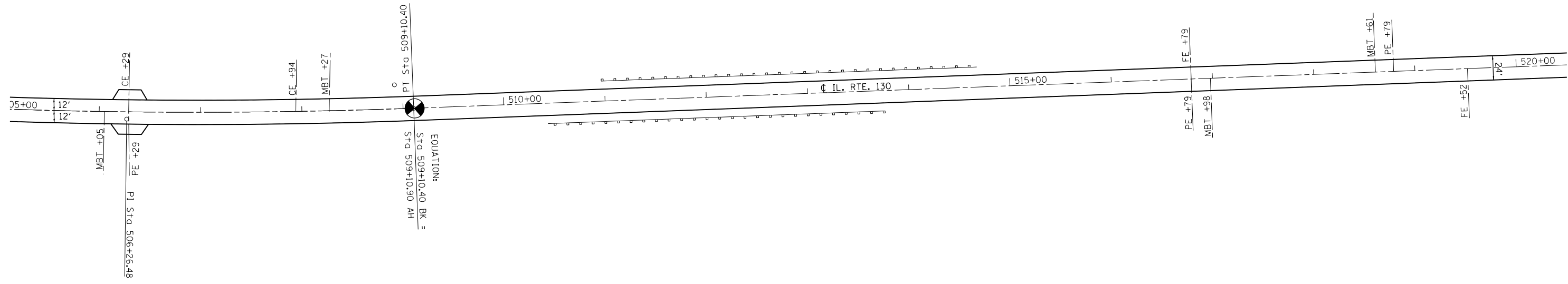
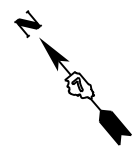
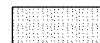


EXIST. CURVE CURV04
 PI STA. = 506+26.48
 $\Delta = 5^\circ 40' 59''$ (LT)
 $D = 1^\circ 00' 00''$
 $R = 5,729.65'$
 $T = 284.38'$
 $L = 568.30'$
 $E = 7.05'$
 $e = \text{-----}$
 $T.R. = \text{-----}$
 $S.E. \text{ RUN} = \text{-----}$
 P.C. STA. = 503+42.10
 P.T. STA. = 509+10.40



 HOT-MIX ASPHALT SURFACE REMOVAL (BUTT-JOINT)

FILE NAME =	USER NAME = steffenmk	DESIGNED -	REVISED -
ci:\pw\work\p\midot\steffenmk\d0147948\074409-shr-plan.dgn		DRAWN -	REVISED -
	PLOT SCALE = 100.0000' / in.	CHECKED -	REVISED -
	PLOT DATE = 3/14/2013	DATE -	REVISED -

**STATE OF ILLINOIS
 DEPARTMENT OF TRANSPORTATION**

PLAN SHEET

SCALE: 50 SHEET NO. 16 OF 20 SHEETS STA. 505+00 TO STA. 535+00

F.A.P. RTE.	SECTION	COUNTY	TOTAL SHEETS	SHEET NO.
116	(124,125,126)RS-3	RICHLAND	60	38
CONTRACT NO. 74409				
ILLINOIS FED. AID PROJECT				