

STATE OF ILLINOIS
 DEPARTMENT OF TRANSPORTATION
 DIVISION OF HIGHWAYS

**PROPOSED
 HIGHWAY PLANS**

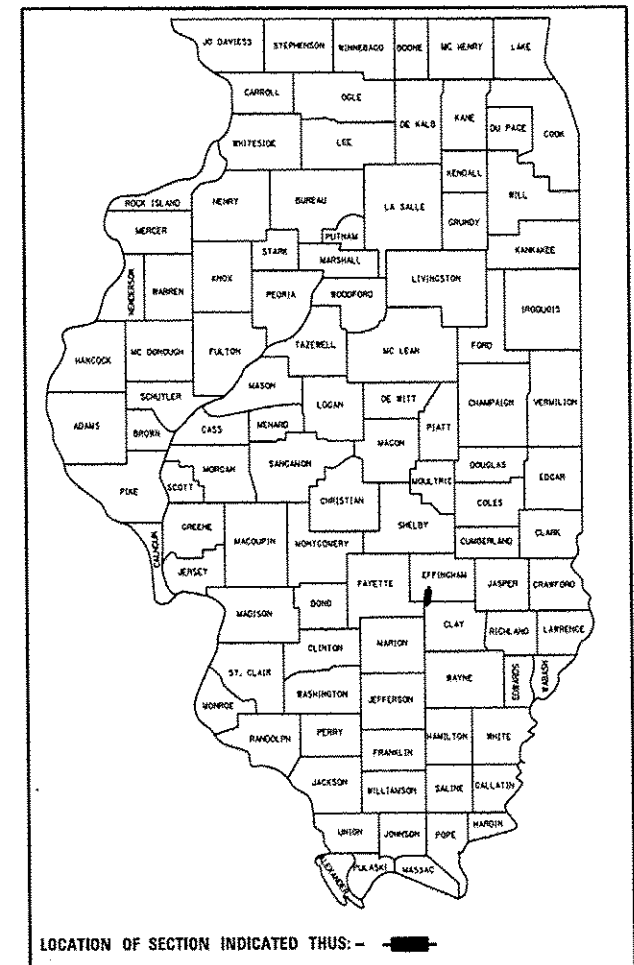
F.A.I. ROUTE 57 (I-57)
 SECTION (25-6-1)RS-8 & (13-1)RS-2
 PROJECT NHPP-0057 (303)
 RESURFACING, BRIDGE REPAIR (S.B. ONLY)
 EFFINGHAM AND CLAY COUNTIES

C-97-070-10

F.A.I. RTE.	SECTION	COUNTY	TOTAL SHEETS	SHEET NO.
57	*	**	84	1
ILLINOIS		CONTRACT NO. 74450		

* (25-6-1)RS-8 & (13-1)RS-2
 ** EFFINGHAM, CLAY

D-97-033-10



FOR INDEX OF SHEETS, SEE SHEET NO. 2

STATION EQUATIONS:

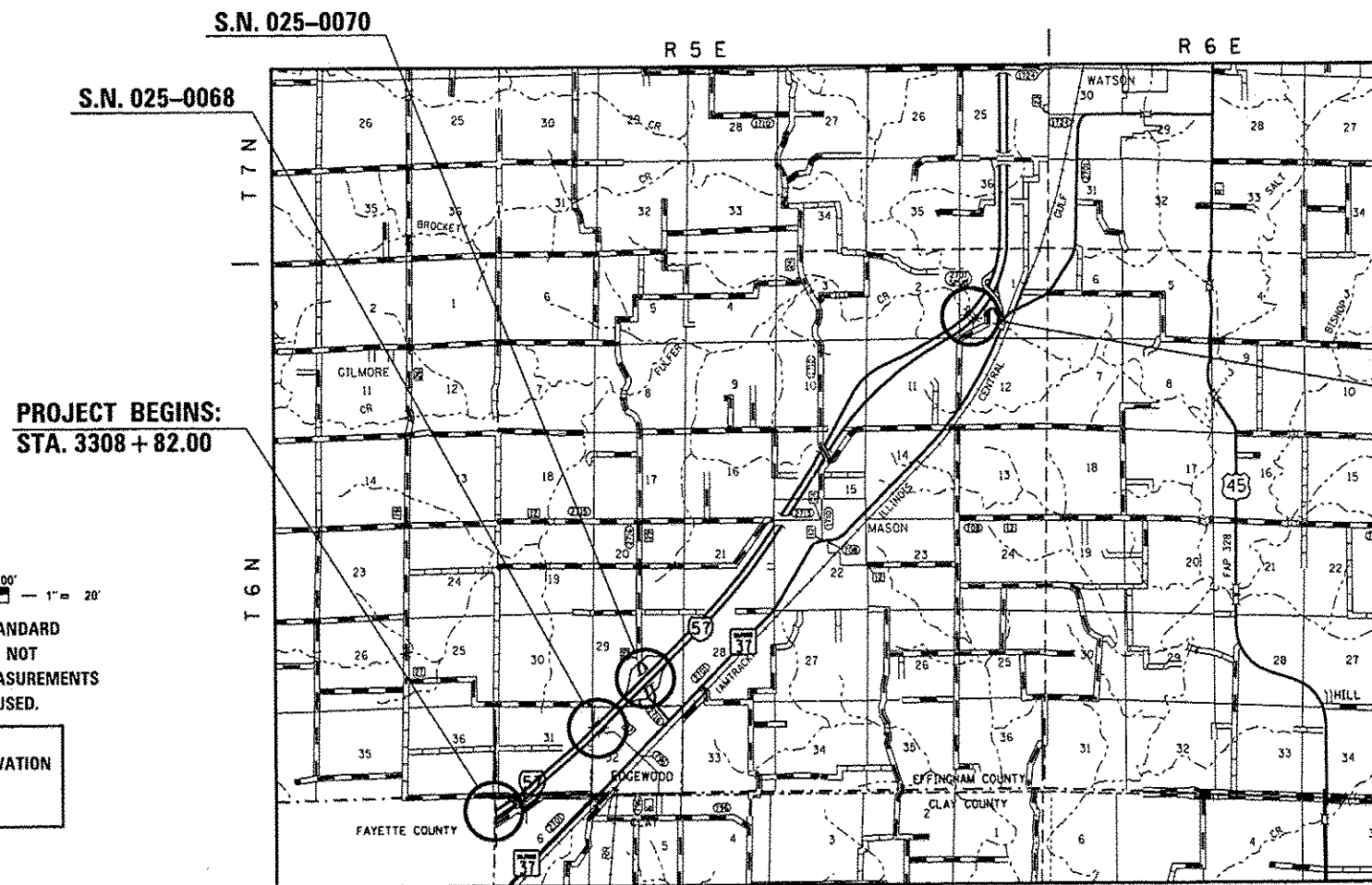
STA. 3319 + 28.36 (BK) =
 STA. 4199 + 97.27 (AH)

STA. 4207 + 51.49 (BK) CLAY CO. =
 STA. 4207 + 51.63 (AH) EFFINGHAM CO.

PT. STA. 4556 + 92.75 (BK) =
 STA. 4554 + 44.59 (AH)

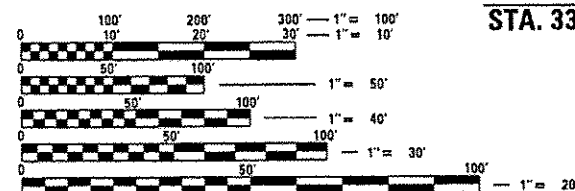
STA. 4582 + 77.63 (BK) =
 PC STA. 4609 + 69.68 (AH)

ADT = 7800 (2011)



PROJECT BEGINS:
 STA. 3308 + 82.00

PROJECT ENDS:
 STA. 4625 + 58.98



FULL SIZE PLANS HAVE BEEN PREPARED USING STANDARD ENGINEERING SCALES. REDUCED SIZED PLANS WILL NOT CONFORM TO STANDARD SCALES. IN MAKING MEASUREMENTS ON REDUCED PLANS, THE ABOVE SCALES MAY BE USED.

J.U.L.I.E.
 JOINT UTILITY LOCATION INFORMATION FOR EXCAVATION
 1-800-892-0123
 OR 811

PROJECT ENGINEER: TOM RONAN
 PROJECT MANAGER: JEFF DAVISON
 PHONE: (217)-342-8314

CONTRACT NO. 74450

GROSS LENGTH = 41,167.76 FT. = 7.80 MILES
 NET LENGTH = 40,784.92 FT. = 7.72 MILES

STATE OF ILLINOIS
 DEPARTMENT OF TRANSPORTATION
 DIVISION OF HIGHWAYS

SUBMITTED Oct 19 20 12
Roger L. Drishell, P.E.
 DEPUTY DIRECTOR OF HIGHWAYS, REGION ENGINEER

May 10 20 13
John D. Baranzelli, P.E.
 CITY ENGINEER OF DESIGN AND ENVIRONMENT

May 10 20 13
Over Osman, P.E.
 DIRECTOR OF HIGHWAYS, CHIEF ENGINEER

**PRINTED BY THE AUTHORITY
 OF THE STATE OF ILLINOIS**