
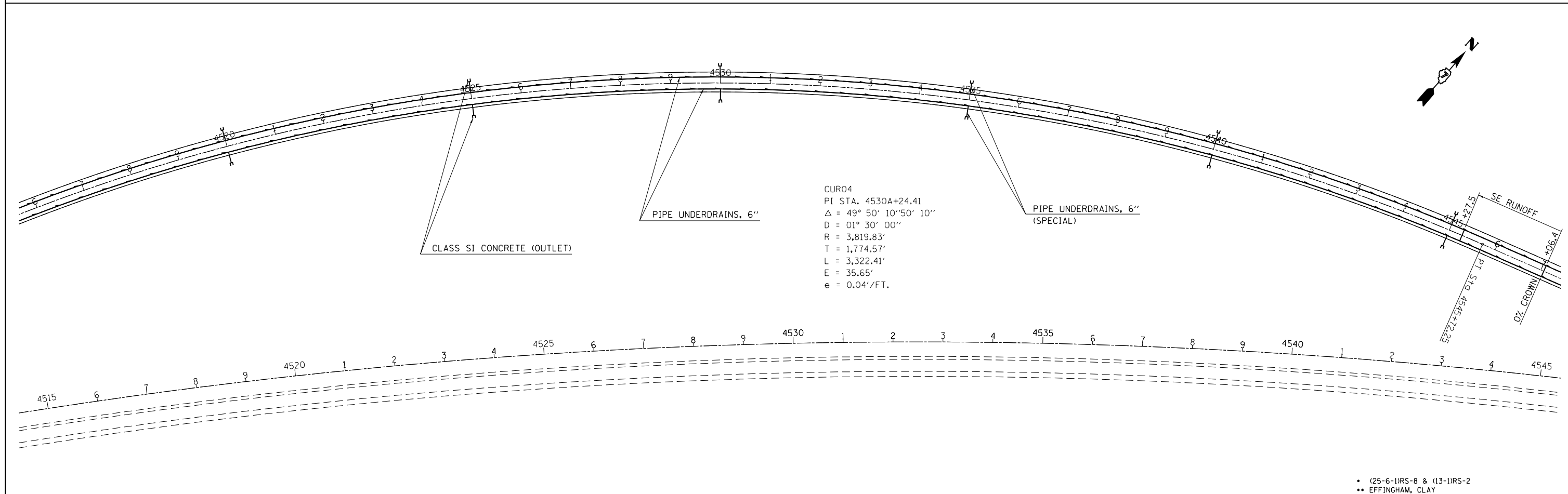


CUR03
 PI STA. 4501A+11.67
 $\Delta = 12^\circ 45' 00''$
 $D = 01^\circ 00' 00''$
 $R = 5,729.65'$
 $T = 640.15'$
 $L = 1,275.0'$
 $E = 35.65'$
 $e = 0.03'/FT.$

 PAVED SHOULDER REMOVAL



CUR04
 PI STA. 4530A+24.41
 $\Delta = 49^\circ 50' 10'' 50' 10''$
 $D = 01^\circ 30' 00''$
 $R = 3,819.83'$
 $T = 1,774.57'$
 $L = 3,322.41'$
 $E = 35.65'$
 $e = 0.04'/FT.$

• (25-6-1)RS-8 & (13-1)RS-2
 •• EFFINGHAM, CLAY

FILE NAME = c:\pwork\pwork\teasleyck\d0181558\d774450-sht-plan.dgn	USER NAME = teasleyck	DESIGNED -	REVISED -	STATE OF ILLINOIS DEPARTMENT OF TRANSPORTATION	PLAN SHEET			F.A.I. RTE. = 57	SECTION =	COUNTY =	TOTAL SHEETS = 84	SHEET NO. = 42
	PLOT SCALE = 200.0000' / in.	CHECKED -	REVISED -		SCALE: 100	SHEET NO. 6 OF 8 SHEETS	STA. 4486+00 TO STA. 4515+00	CONTRACT NO. 74450				
PLOT DATE = 10/18/2012	DATE -	REVISED -	REVISED -	ILLINOIS FED. AID PROJECT								