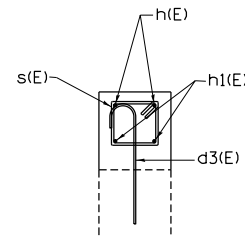
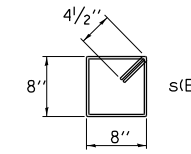
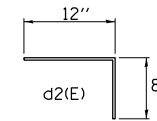
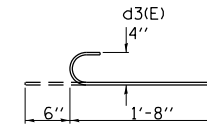


Burn exist. 1" anchor bolts flush with concrete surface. Grind smooth and seal with epoxy. Cost included with Concrete Structures.



Section A-A

BILL OF MATERIAL & BAR LIST				
BAR	NO.	SIZE	LENGTH	SHAPE
d2(E)	52	4	1'-8"	
d3(E)	52	4	2'-2"	
h(E)	26	5	7'-0"	
h1(E)	26	5	3'-3"	
s(E)	26	4	3'-5"	
Concrete Structures Cu. Yd.				3.0
Reinforcement Bars, Epoxy Coated				Pound 530



GENERAL NOTES

All edges shall have standard (3/4") chamfers.

Bolt holes for connection of type 6 end shoe shall be drilled or formed. Wood blockouts and extra length bolts will be required for flared wingwalls

Reinforcement bars designated (E) shall be epoxy coated.

Modification shall be made to the NE, NW and SW wingwalls of the SB structure SN 025-0068 and to the SW, SE, NW and NE wingwalls of structures 025-0043 and 0073.

Epoxy grout d2(E) & d3(E) bars in 9" deep holes in accordance with Section 584 of the Standard Specifications.

Concrete removal shall be considered included in the cost of Concrete Structures.

• (25-6-1)RS-8 & (13-1)RS-2  
• EFFINGHAM, CLAY

FILE NAME =	USER NAME = teasleyck	DESIGNED -	REVISED -	<b>STATE OF ILLINOIS DEPARTMENT OF TRANSPORTATION</b>	<b>WING WALL MODIFICATION DETAILS</b>			F.A.I. RTE.	SECTION	COUNTY	TOTAL SHEETS	SHEET NO.
et:\pw\work\p\idot\teasleyck\d0181558\d774450-sht-details.dgn		DRAWN -	REVISED -		57	.	..	84	83			
PLOT SCALE = 100.0000' / 1in.		CHECKED -	REVISED -		CONTRACT NO. 74450							
PLOT DATE = 10/18/2012		DATE -	REVISED -		SCALE: NA	SHEET NO. 1 OF 1 SHEETS	STA.	TO STA.	ILLINOIS FED. AID PROJECT			