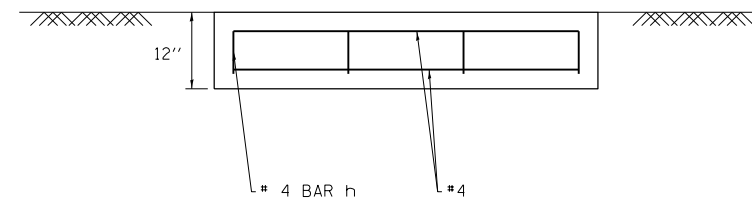
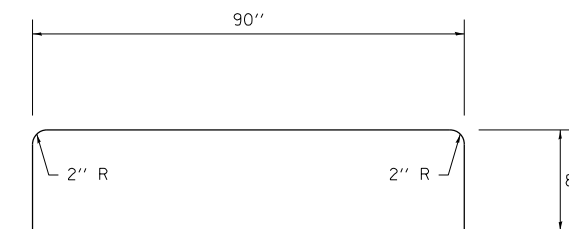


PLAN VIEW



SECTION C-C



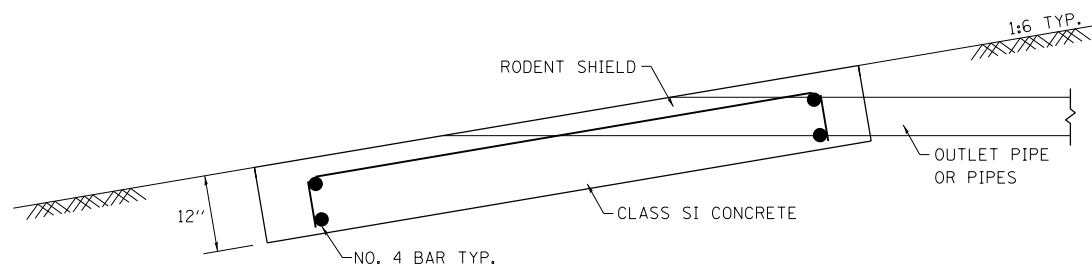
#4 h BAR

NOTES

- See Standard 601101 for details of rodent shields.
- The outlet pipe or pipes shall be located as close as possible to the center of the outlet protector.
- The last 10' of outlet pipe shall be schedule 40 PVC.
- The rebars may be cut or relocated to accomodate pipe.
- Cut outlet pipe on a bevel to match finished surface of surrounding PCC.
- Seeding Class 2 shall be considered included in the cost of the pay items.

OUTLET PROTECTOR BILL OF MATERIALS

PAY ITEM	UNIT	QUANTITIES PER EACH OUTLET PROTECTOR	SOUTHBOUND QUANTITIES
CLASS SI CONCRETE (MISCELLANEOUS)	CU YD	1.5	238.5
REINFORCING BARS	LB	35.6	5661
RODENT SHIELDS	EACH	1	159



SECTION A-A

FILE NAME =	USER NAME = teasleyck	DESIGNED -	REVISED -
ci:\pw\work\p\idot\teasleyck\d0181558\d774450-sht-details.dgn		DRAWN -	REVISED -
	PLOT SCALE = 100.0000' / 1in.	CHECKED -	REVISED -
	PLOT DATE = 10/18/2012	DATE -	REVISED -

STATE OF ILLINOIS  
DEPARTMENT OF TRANSPORTATION

OUTLET PROTECTOR DETAILS

SCALE: NA SHEET NO. OF SHEETS STA. TO STA.

F.A.I. RTE.	SECTION	COUNTY	TOTAL SHEETS	SHEET NO.
70	(18-47,48,49)R	CUMBERLAND	84	84
CONTRACT NO. 74416				
ILLINOIS FED. AID PROJECT				