

STATE OF ILLINOIS
DEPARTMENT OF TRANSPORTATION
DIVISION OF HIGHWAYS

**PROPOSED
HIGHWAY PLANS**

FAP ROUTE 325 (IL 16)
SECTION 11-2RS-1,11RS-2,10RS-4
PROJECT NHP-0325(060)
BITUMINOUS RESURFACING
SHELBY COUNTY

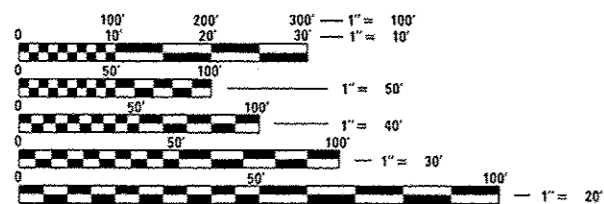
C-97-116-10

F.A.P. RTE.	SECTION	COUNTY	TOTAL SHEETS	SHEET NO.
325	11-2 RS,11RS-2,10RS-4	SHELBY	19	1
		ILLINOIS	CONTRACT NO. 74474	

FOR INDEX OF SHEETS, SEE SHEET NO. 2

STATION EQUATIONS
STA 206+22.30 BK = STA 206+22.71 AH
STA 258+74.86 BK = STA 258+74.20 AH
STA 375+87.42 BK = STA 375+81.05 AH

ADT (2009) = 4,755



FULL SIZE PLANS HAVE BEEN PREPARED USING STANDARD ENGINEERING SCALES. REDUCED SIZED PLANS WILL NOT CONFORM TO STANDARD SCALES. IN MAKING MEASUREMENTS ON REDUCED PLANS, THE ABOVE SCALES MAY BE USED.

J.U.L.I.E.
JOINT UTILITY LOCATION INFORMATION FOR EXCAVATION
1-800-892-0123
OR 811

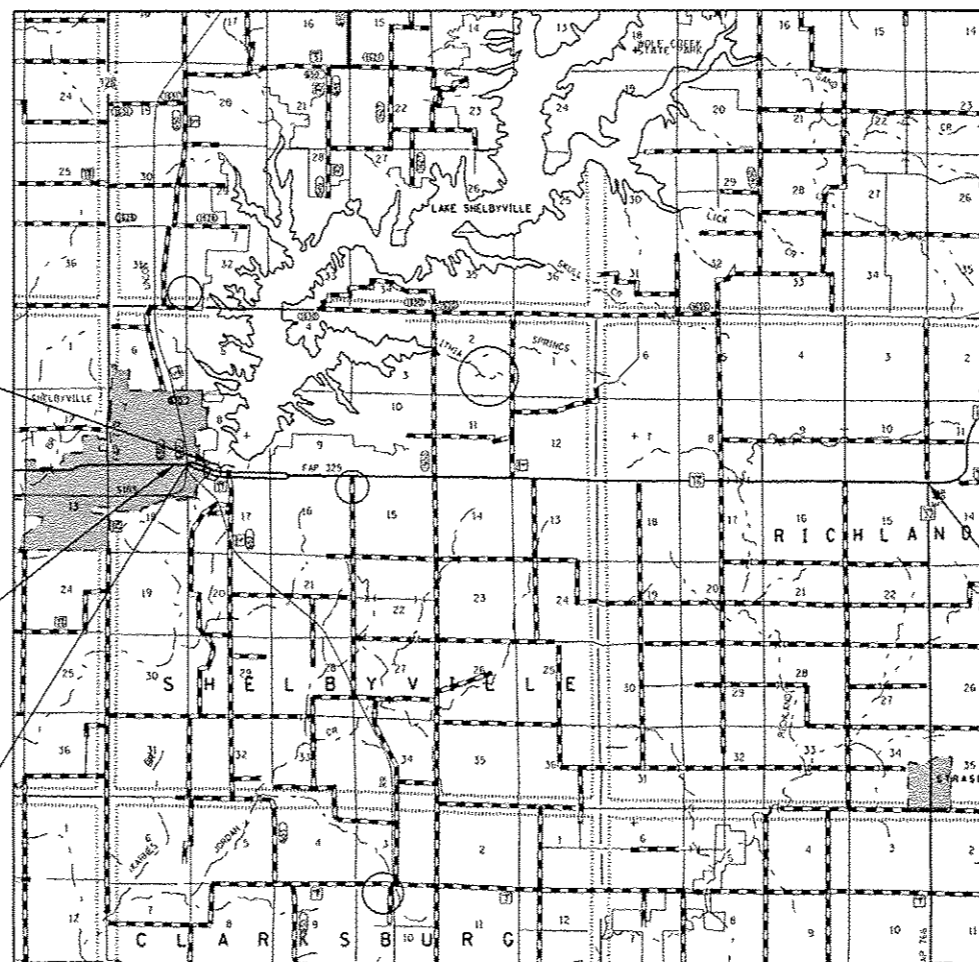
PROJECT ENGINEER: MARK DAUGHERTY
PROJECT MANAGER: BRIAN BIERMAN

CONTRACT NO. 74474

BRIDGE OMISSION
SN 087-0020
STA 107+54 TO
STA 110+03

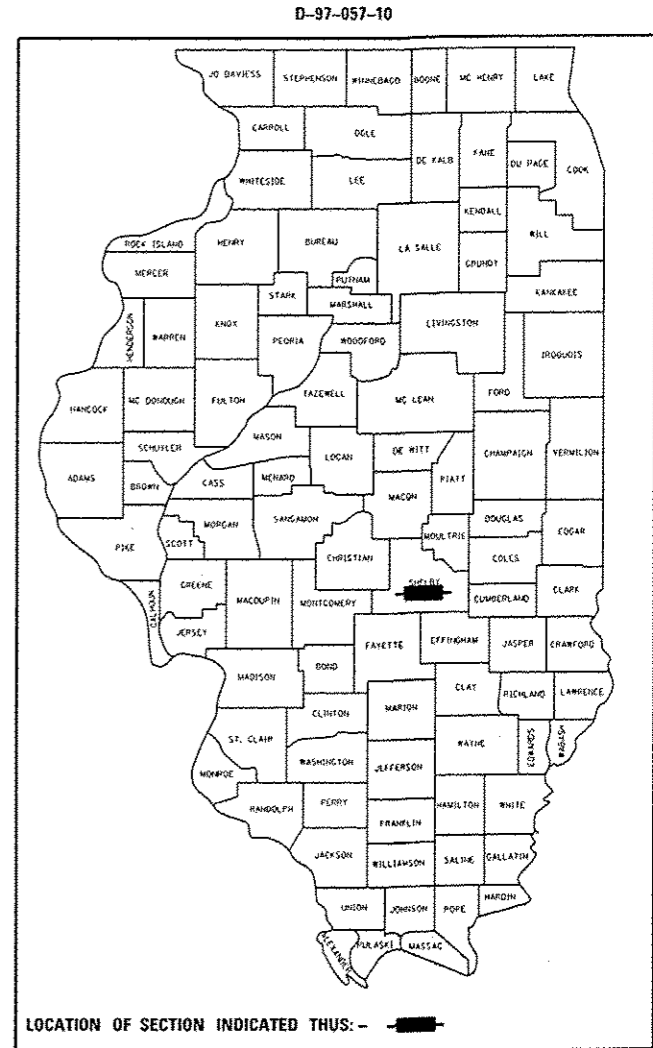
PROJECT BEGINS
WASHINGTON ST.
STA 89+50

RAILROAD OMISSION
STA 92+29 TO
STA 93+05



PROJECT ENDS
IL 32
STA 573+95

GROSS LENGTH = 48,452 FT. = 9.18 MILE
NET LENGTH = 48,203 FT. = 9.13 MILE



LOCATION OF SECTION INDICATED THUS: - [black rectangle] -

STATE OF ILLINOIS
DEPARTMENT OF TRANSPORTATION
DIVISION OF HIGHWAYS
SUBMITTED April 8 2013
Roger L. Dishelmas
DEPUTY DIRECTOR OF HIGHWAYS, REGION ENGINEER
May 10 2013
John D. Baranzelli, PE, JCL
acting ENGINEER OF DESIGN AND ENVIRONMENT
May 10 2013
Omer Osman, PE, JCL
DIRECTOR OF HIGHWAYS, CHIEF ENGINEER

PRINTED BY THE AUTHORITY
OF THE STATE OF ILLINOIS