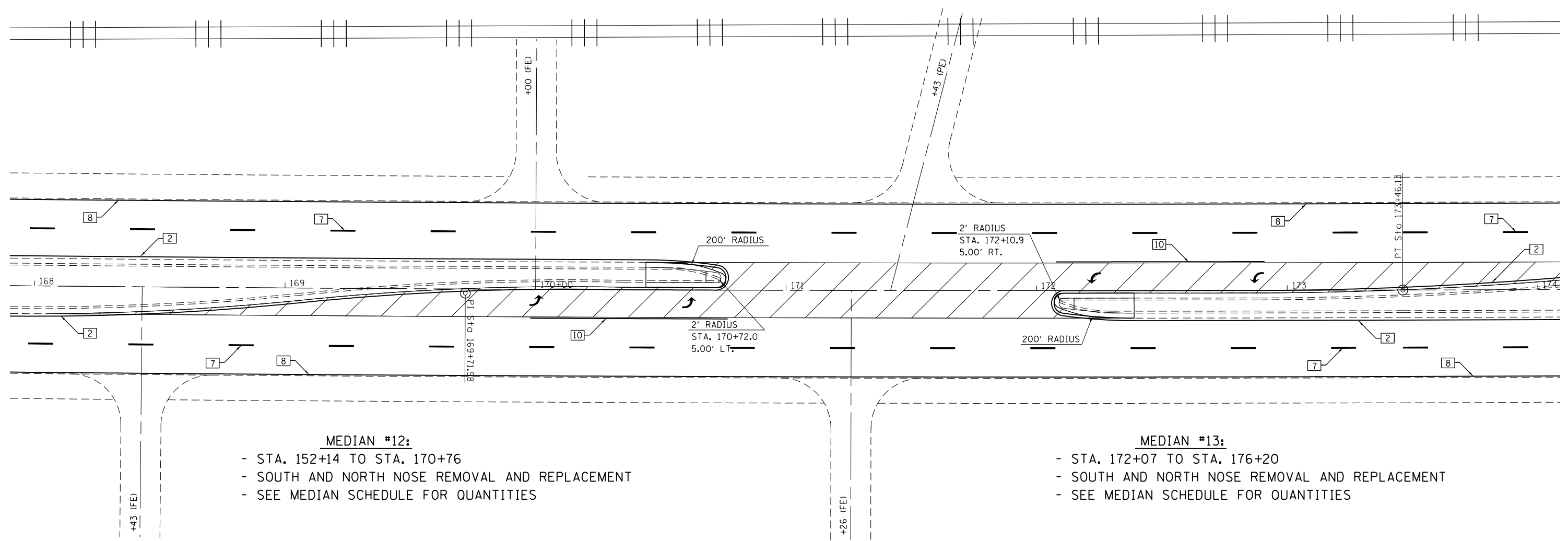


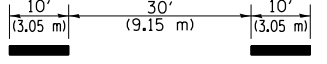
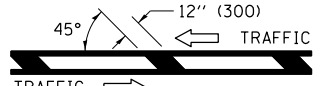

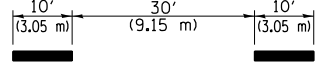
 PARTIAL DEPTH PATCHING



MEDIAN #12:
 - STA. 152+14 TO STA. 170+76
 - SOUTH AND NORTH NOSE REMOVAL AND REPLACEMENT
 - SEE MEDIAN SCHEDULE FOR QUANTITIES

MEDIAN #13:
 - STA. 172+07 TO STA. 176+20
 - SOUTH AND NORTH NOSE REMOVAL AND REPLACEMENT
 - SEE MEDIAN SCHEDULE FOR QUANTITIES

PAVEMENT MARKING LEGEND

- | | | |
|-----------------------------------|---|-------------------------------|
| 1 4" (100) SKIP-DASH (YELLOW) |  | 8 4" (100) SOLID (WHITE) |
| 2 4" (100) SOLID (YELLOW) | | 9 12" (300) DIAGONAL (WHITE) |
| 3 12" (300) DIAGONAL (YELLOW) |  | 10 6" (150) SOLID (WHITE) |
| 4 4" (100) DOUBLE YELLOW (NARROW) |  | 11 24" (600) STOP BAR (WHITE) |
| 5 12" (300) SOLID WHITE | | 12 8" (200) SOLID (WHITE) |
| 6 RESERVED | | 13 4" (100) PARKING WHITE |
| 7 6" (150) SKIP-DASH (WHITE) |  | |

FILE NAME =	USER NAME = steffenmk	DESIGNED -	REVISED -
c:\pwork\pwork\stevfenmk\d0271850\074537-sh-t-plan.dgn		DRAWN -	REVISED -
Default	PLOT SCALE = 40.0000' / in.	CHECKED -	REVISED -
	PLOT DATE = 3/22/2013	DATE -	REVISED -

**STATE OF ILLINOIS
DEPARTMENT OF TRANSPORTATION**

PLAN
 SCALE: 20 SHEET 15 OF 31 SHEETS STA. 168+00 TO STA. 174+00

• F.A.P. RTE. 712, F.A.U. RTE. 7464				
F.A. RTE.	SECTION	COUNTY	TOTAL SHEETS	SHEET NO.
•	58-64-IRS, 126RS-2	Macon	69	41
			CONTRACT NO. 74537	
ILLINOIS FED. AID PROJECT				