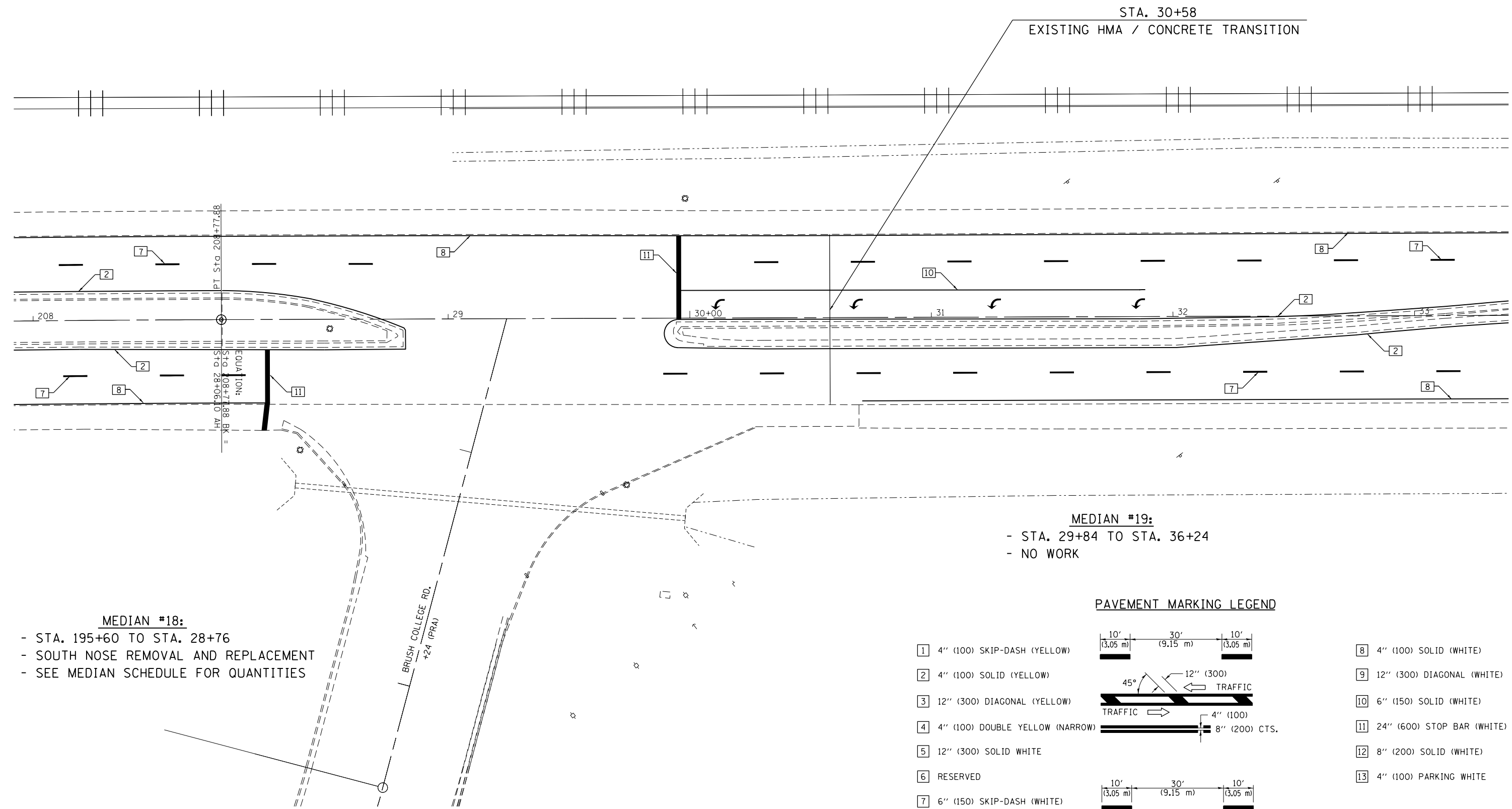


STA. 30+58
EXISTING HMA / CONCRETE TRANSITION



MEDIAN #18:
- STA. 195+60 TO STA. 28+76
- SOUTH NOSE REMOVAL AND REPLACEMENT
- SEE MEDIAN SCHEDULE FOR QUANTITIES

MEDIAN #19:
- STA. 29+84 TO STA. 36+24
- NO WORK

PAVEMENT MARKING LEGEND

- | | | |
|---|--|--|
| <ul style="list-style-type: none"> 1 4" (100) SKIP-DASH (YELLOW) 2 4" (100) SOLID (YELLOW) 3 12" (300) DIAGONAL (YELLOW) 4 4" (100) DOUBLE YELLOW (NARROW) 5 12" (300) SOLID WHITE 6 RESERVED 7 6" (150) SKIP-DASH (WHITE) | | <ul style="list-style-type: none"> 8 4" (100) SOLID (WHITE) 9 12" (300) DIAGONAL (WHITE) 10 6" (150) SOLID (WHITE) 11 24" (600) STOP BAR (WHITE) 12 8" (200) SOLID (WHITE) 13 4" (100) PARKING WHITE |
|---|--|--|

FILE NAME =	USER NAME = steffenmk	DESIGNED -	REVISED -
ci:\pw\work\p\midot\steffenmk\d0271850\074537-shr-plan.dgn		DRAWN -	REVISED -
Default	PLOT SCALE = 40.0000' / in.	CHECKED -	REVISED -
	PLOT DATE = 3/22/2013	DATE -	REVISED -

**STATE OF ILLINOIS
DEPARTMENT OF TRANSPORTATION**

PLAN
SCALE: 20 SHEET 22 OF 31 SHEETS STA. 208+00 TO STA. 33+00

* F.A.P. RTE. 712, F.A.U. RTE. 7464				
F.A. RTE.	SECTION	COUNTY	TOTAL SHEETS	SHEET NO.
58-64-IRS, 126RS-2		Macon	69	48
			CONTRACT NO. 74537	
ILLINOIS FED. AID PROJECT				