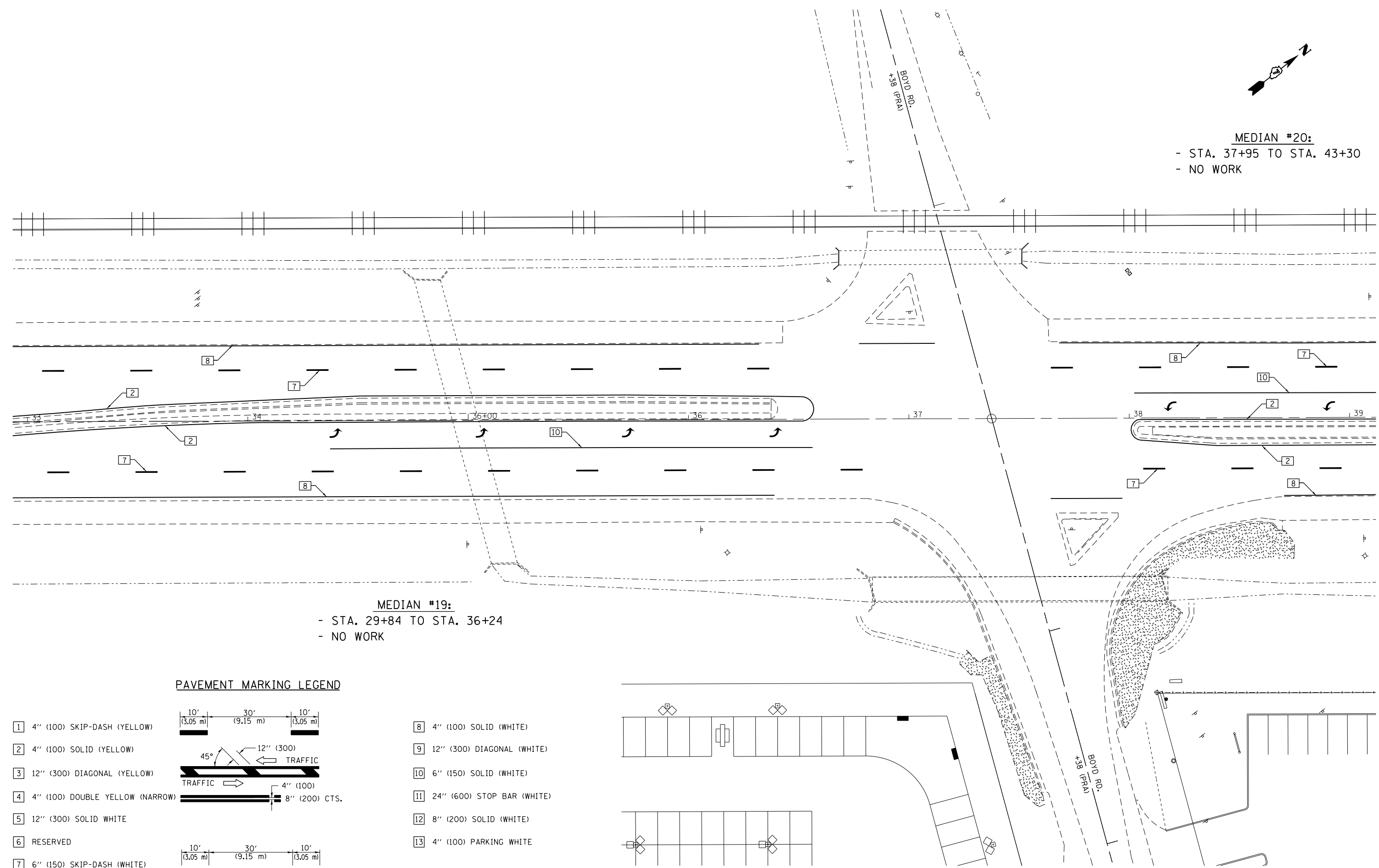


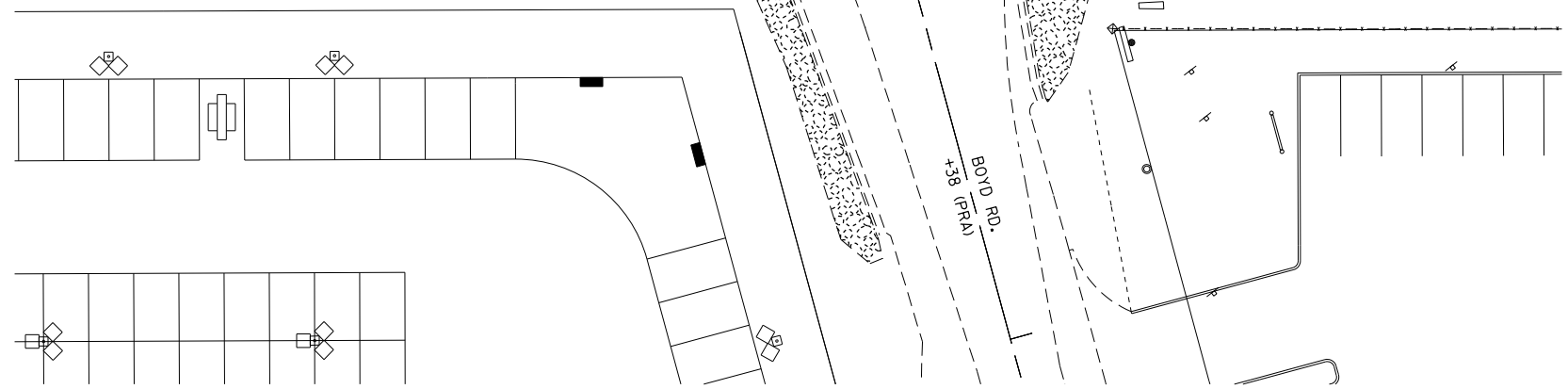
MEDIAN #20:
 - STA. 37+95 TO STA. 43+30
 - NO WORK



MEDIAN #19:
 - STA. 29+84 TO STA. 36+24
 - NO WORK

PAVEMENT MARKING LEGEND

- | | | |
|--|--|---|
| <p>1 4" (100) SKIP-DASH (YELLOW)</p> <p>2 4" (100) SOLID (YELLOW)</p> <p>3 12" (300) DIAGONAL (YELLOW)</p> <p>4 4" (100) DOUBLE YELLOW (NARROW)</p> <p>5 12" (300) SOLID WHITE</p> <p>6 RESERVED</p> <p>7 6" (150) SKIP-DASH (WHITE)</p> | | <p>8 4" (100) SOLID (WHITE)</p> <p>9 12" (300) DIAGONAL (WHITE)</p> <p>10 6" (150) SOLID (WHITE)</p> <p>11 24" (600) STOP BAR (WHITE)</p> <p>12 8" (200) SOLID (WHITE)</p> <p>13 4" (100) PARKING WHITE</p> |
|--|--|---|



• F.A.P. RTE. 712, F.A.U. RTE. 7464

FILE NAME =	USER NAME = steffenmk	DESIGNED -	REVISED -
Default	Default	DRAWN -	REVISED -
	PLOT SCALE = 40.0000' / in.	CHECKED -	REVISED -
	PLOT DATE = 3/22/2013	DATE -	REVISED -

STATE OF ILLINOIS
DEPARTMENT OF TRANSPORTATION

PLAN
 SCALE: 20 SHEET 23 OF 31 SHEETS STA. 33+00 TO STA. 39+00

F.A. RTE.	SECTION	COUNTY	TOTAL SHEETS	SHEET NO.
58-64-IRS, 126RS-2		Macon	69	49
CONTRACT NO. 74537			ILLINOIS FED. AID PROJECT	