

F.A.P. RTE.	SECTION	COUNTY	TOTAL SHEETS	SHEET NO.
116	126N	EDWARDS	71	1
		ILLINOIS	CONTRACT NO. 74567	

STATE OF ILLINOIS  
DEPARTMENT OF TRANSPORTATION  
DIVISION OF HIGHWAYS

**PROPOSED  
HIGHWAY PLANS**

FAP ROUTE 116 (IL. RTE. 130)  
SECTION 126N  
PROJECT F-0116(058)  
INTERSECTION  
EDWARDS COUNTY

C-97-074-12

FOR INDEX OF SHEETS, SEE SHEET NO. 2

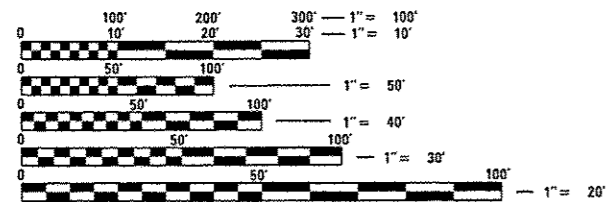
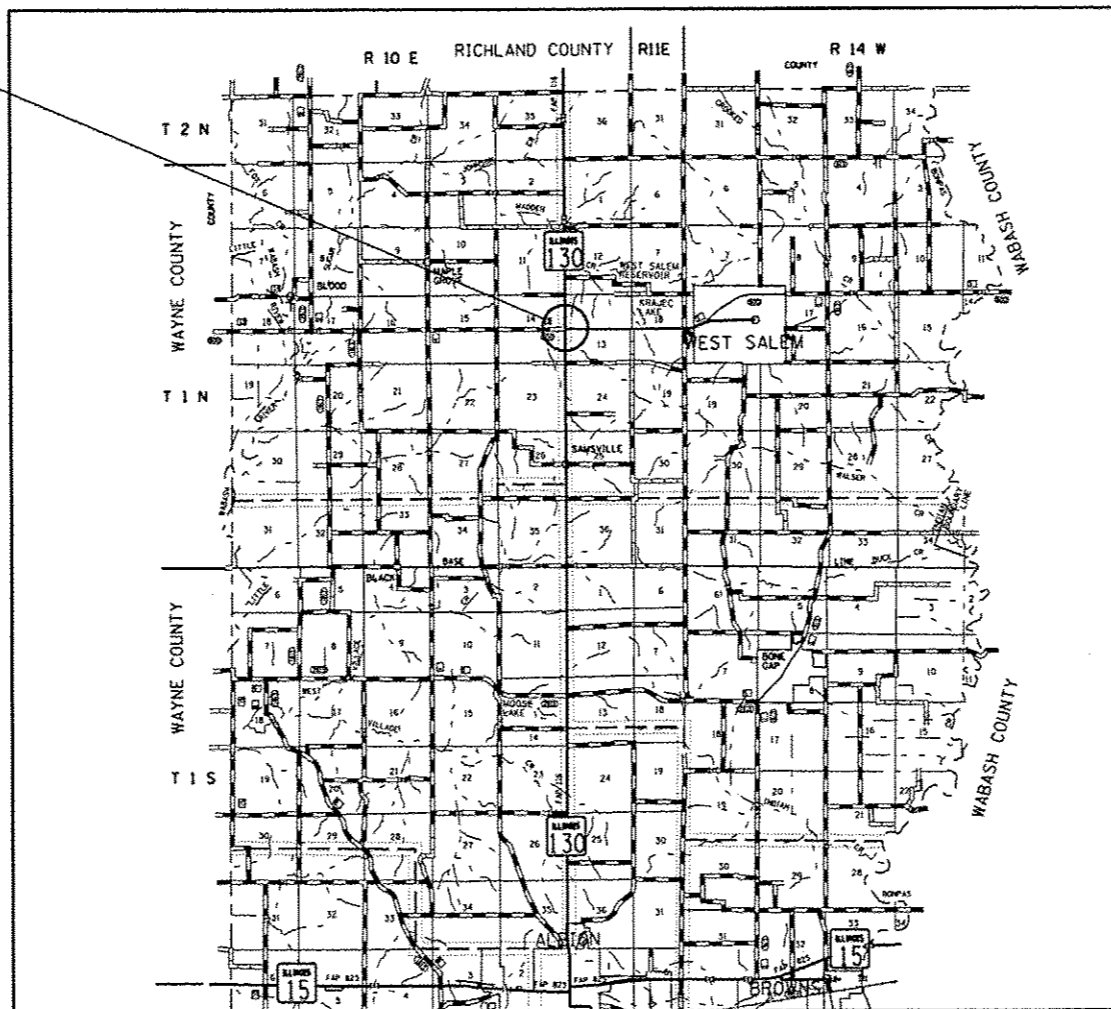
STATION EQUATION:  
STA. 1020+00.00 (BK) = STA. 0+00.00 (AH)

ADT = 4200 (2009)

D-97-029-12



FAP ROUTE 116 (IL RTE 130)  
SECTION 126N  
EDWARDS COUNTY  
BEGINS STA. 808 + 05.50  
ENDS STA. 826 + 17.60



FULL SIZE PLANS HAVE BEEN PREPARED USING STANDARD ENGINEERING SCALES. REDUCED SIZED PLANS WILL NOT CONFORM TO STANDARD SCALES. IN MAKING MEASUREMENTS ON REDUCED PLANS, THE ABOVE SCALES MAY BE USED.

J.U.L.I.E.  
JOINT UTILITY LOCATION INFORMATION FOR EXCAVATION  
1-800-892-0123  
OR 811

PROJECT ENGINEER: TOM RONAN  
PROJECT MANAGER: JENNIFER SHULL  
PHONE: (217)-342-8361  
CONTRACT NO. 74567

GROSS LENGTH = 1812.10 FT. = 0.34 MILES  
NET LENGTH = 1812.10 FT. = 0.34 MILES

STATE OF ILLINOIS  
DEPARTMENT OF TRANSPORTATION  
DIVISION OF HIGHWAYS

SUBMITTED MARCH 19 20 13  
Roger L. Drishell  
DEPUTY DIRECTOR OF HIGHWAYS, REGION ENGINEER

May 10 20 13  
John D. Baranzelli, P.E.  
ENGINEER OF DESIGN AND ENVIRONMENT

May 10 20 13  
Omair Osman, P.E.  
DIRECTOR OF HIGHWAYS, CHIEF ENGINEER

PRINTED BY THE AUTHORITY  
OF THE STATE OF ILLINOIS