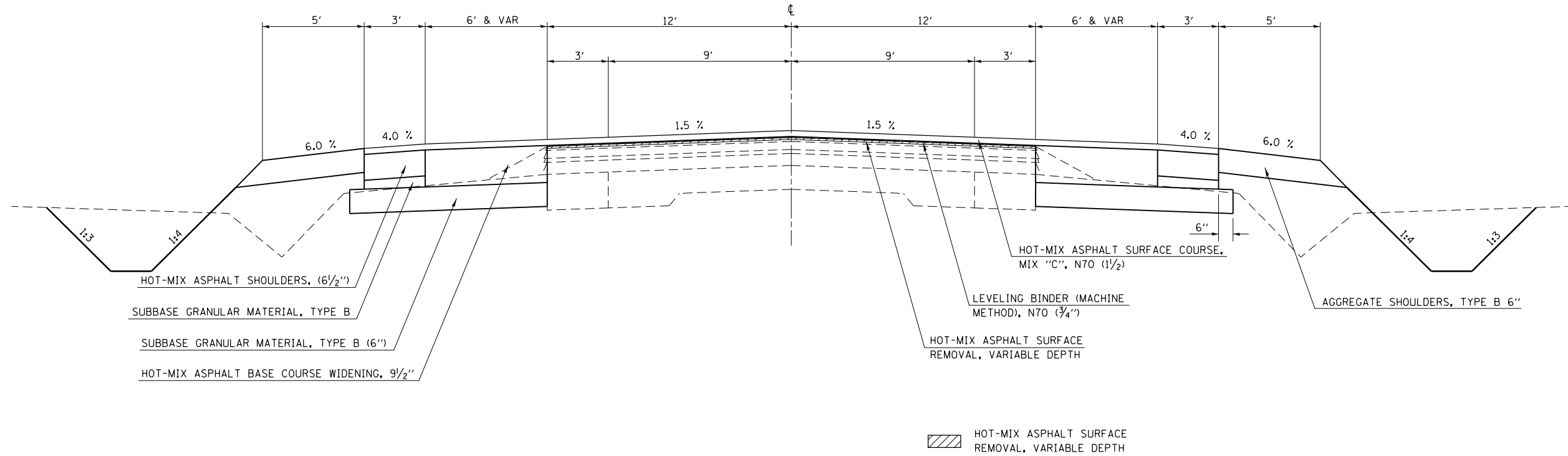


① PROPOSED TYPICAL SECTION

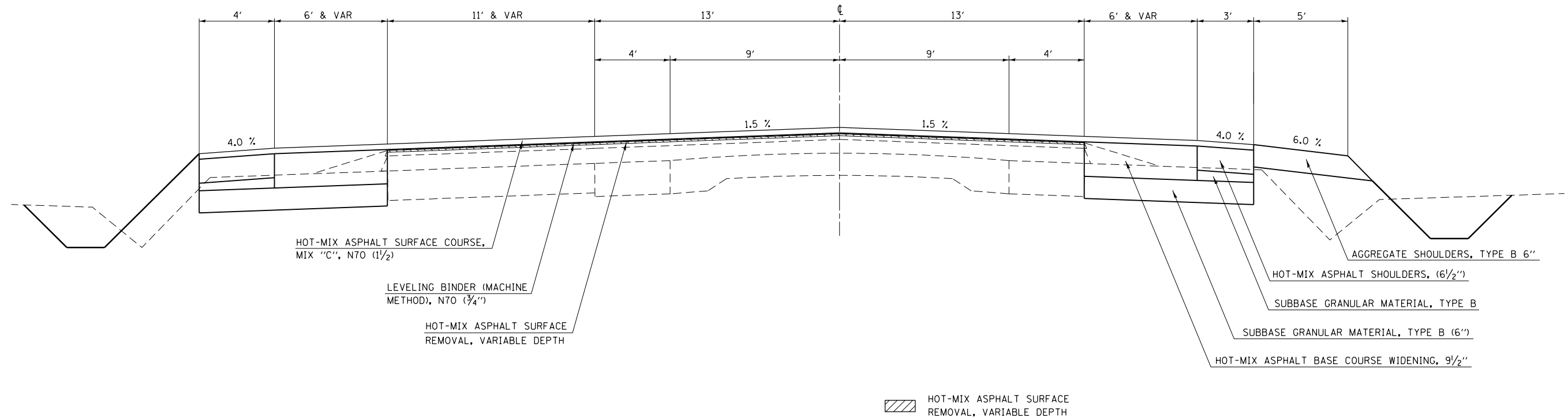
STA. 808+40.5 TO STA. 817+23.0



NOTE: NOT TO SCALE

② PROPOSED TYPICAL SECTION

STA. 817+23.0 TO STA. 820+17.6



NOTE: NOT TO SCALE

FILE NAME =	USER NAME = steffenmk	DESIGNED -	REVISED -
ci:\pw\work\p\dot\stefenmk\d030911\d774567-sh-typical.dgn		DRAWN -	REVISED -
	PLOT SCALE = 100.0000' / in.	CHECKED -	REVISED -
Default	PLOT DATE = 3/18/2013	DATE -	REVISED -

STATE OF ILLINOIS
DEPARTMENT OF TRANSPORTATION

PROPOSED TYPICAL CROSS SECTION

SCALE: N/A SHEET 3 OF 5 SHEETS STA. TO STA.

F.A.P. RTE.	SECTION	COUNTY	TOTAL SHEETS	SHEET NO.
116	126N	EDWARDS	71	10
CONTRACT NO. 74567				
ILLINOIS FED. AID PROJECT				