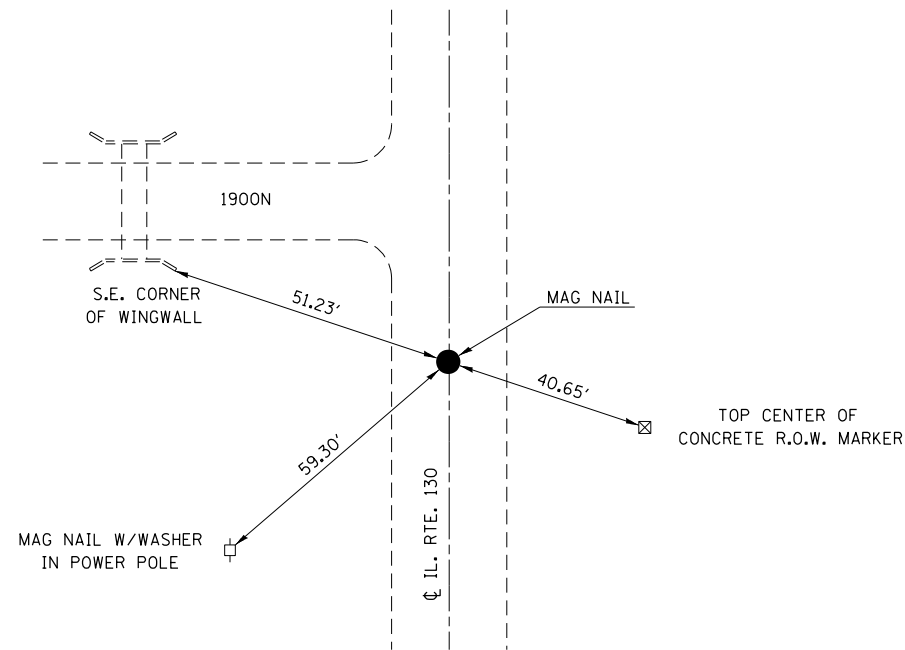
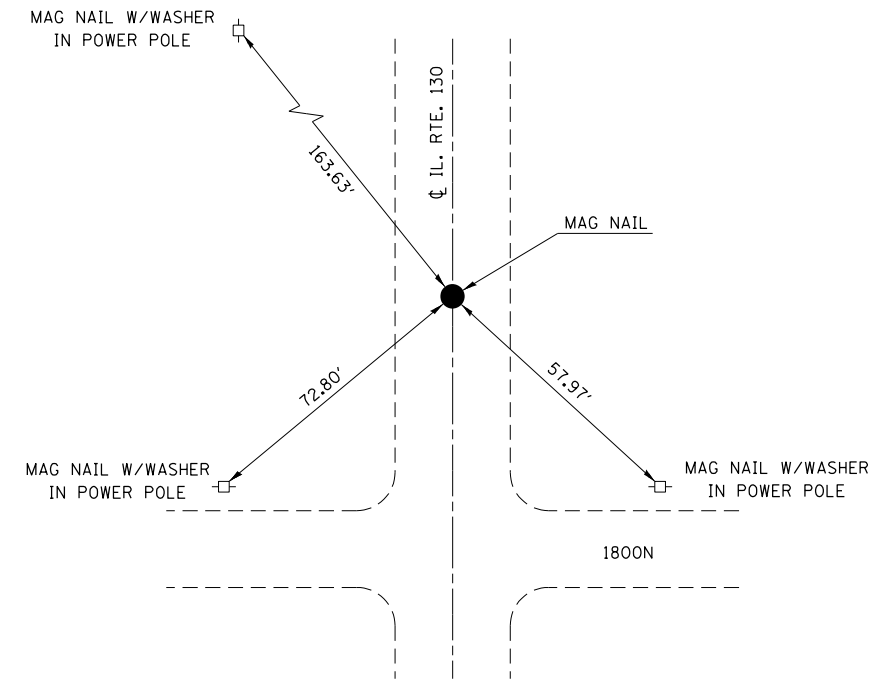


P.O.T. STATION 790+97.45



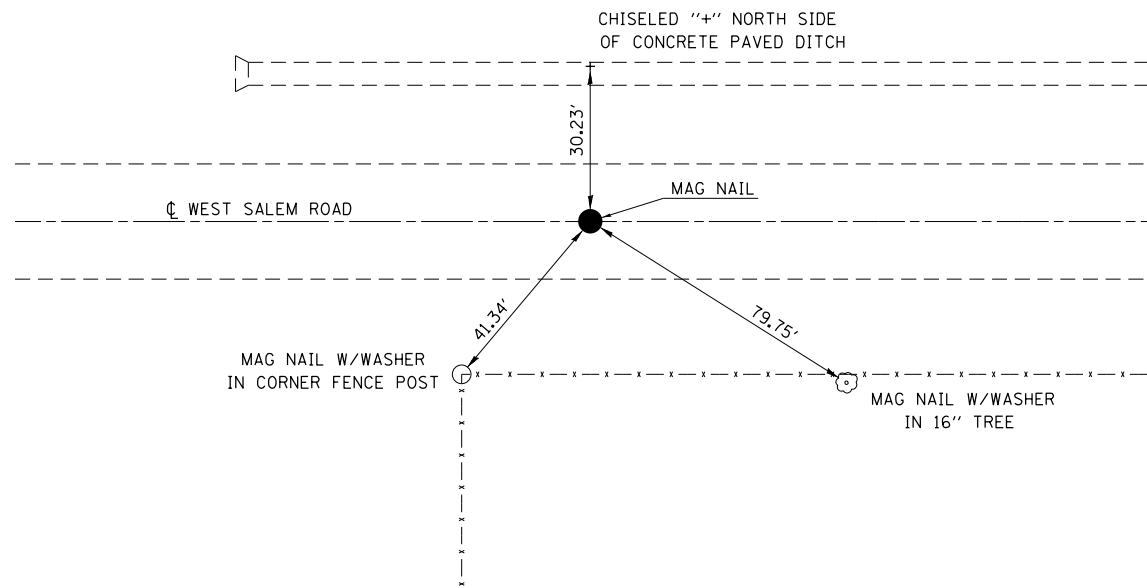
NOTE: NOT DRAWN TO SCALE

P.O.T. STATION 843+03.30



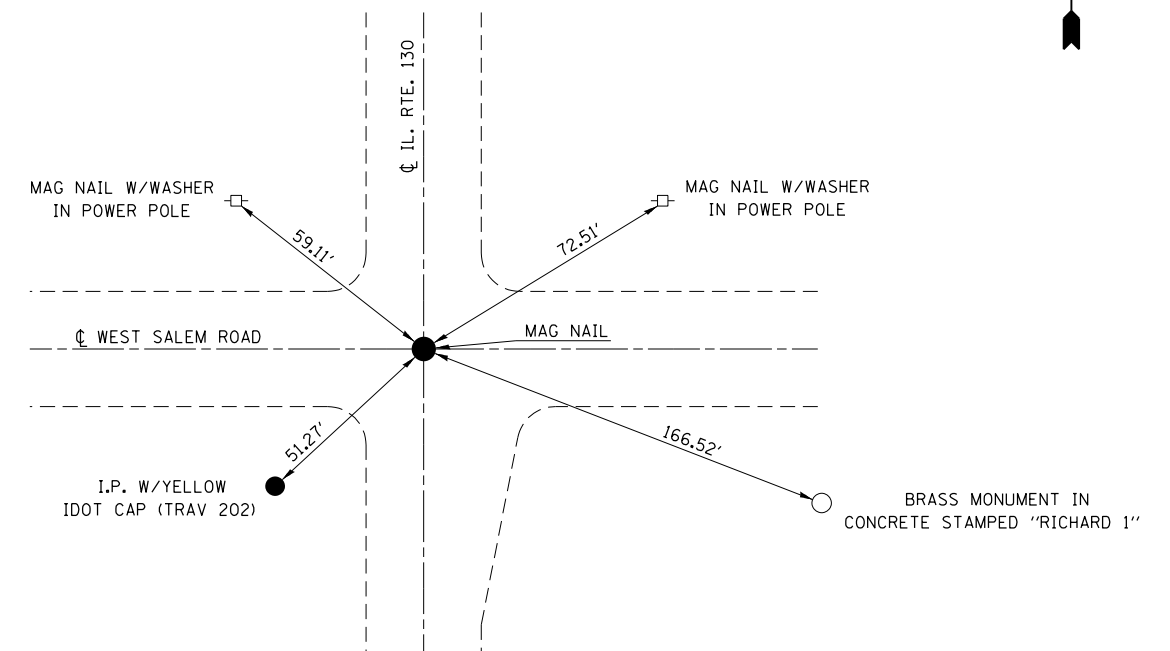
NOTE: NOT DRAWN TO SCALE

P.O.T. STATION 1006+83.71  
WEST SALEM ROAD



NOTE: NOT DRAWN TO SCALE

P.I. STATION 1019+91.00 (WEST SALEM ROAD) =  
STATION 817+11.50 (IL. RTE. 130) P.O.T.



NOTE: NOT DRAWN TO SCALE

FILE NAME =	USER NAME = steffenmk	DESIGNED -	REVISED -
ct:\pw\work\p\dot\steffenmk\d030911\d774567-shr-ties.dgn		DRAWN -	REVISED -
	PLOT SCALE = 100.0000' / 1" =	CHECKED -	REVISED -
	PLOT DATE = 3/18/2013	DATE -	REVISED -

STATE OF ILLINOIS  
DEPARTMENT OF TRANSPORTATION

TIE POINTS

SCALE: NA SHEET NO. 1 OF 2 SHEETS STA. TO STA.

F.A.P. RTE.	SECTION	COUNTY	TOTAL SHEETS	SHEET NO.
116	126N	EDWARDS	71	18
CONTRACT NO. 74567				
ILLINOIS FED. AID PROJECT				