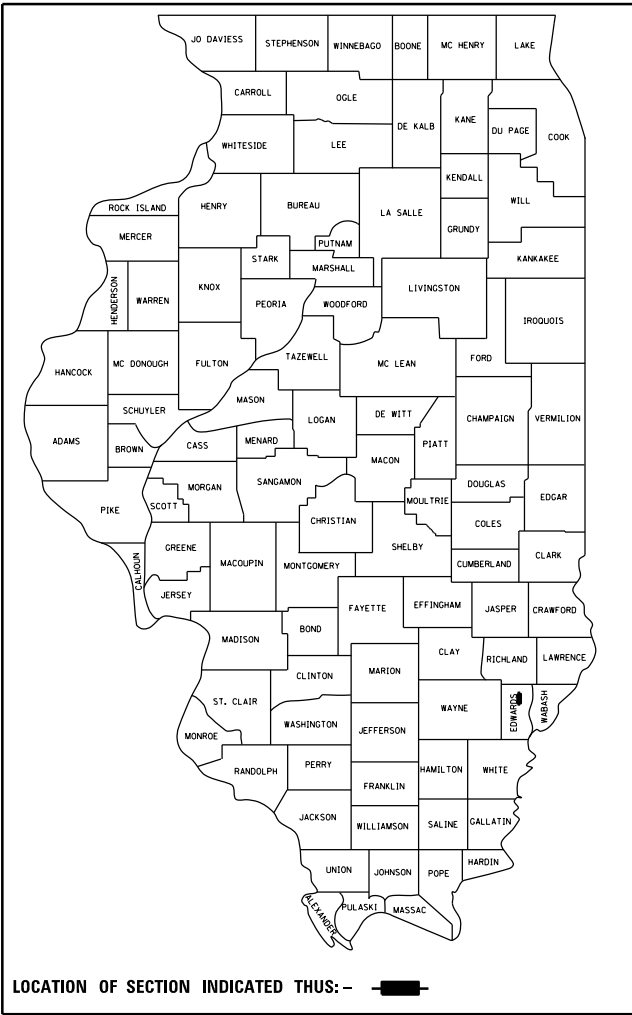


**STATE OF ILLINOIS**  
**DEPARTMENT OF TRANSPORTATION**  
**DIVISION OF HIGHWAYS**  
**PROPOSED**  
**RIGHT OF WAY PLANS**

**FAP ROUTE 116 (IL 130)**  
**SECTION (126, 127)RS-5**  
**PROJECT**  
**EDWARDS COUNTY**

F.A.P. RTE.	SECTION	COUNTY	TOTAL SHEETS	SHEET NO.
116	126N	EDWARDS	71	32
		ILLINOIS	CONTRACT NO. 74567	

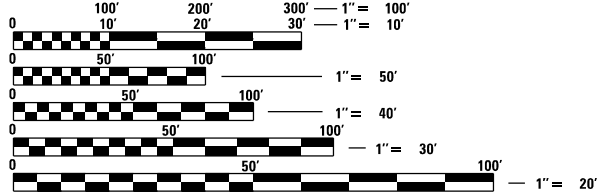
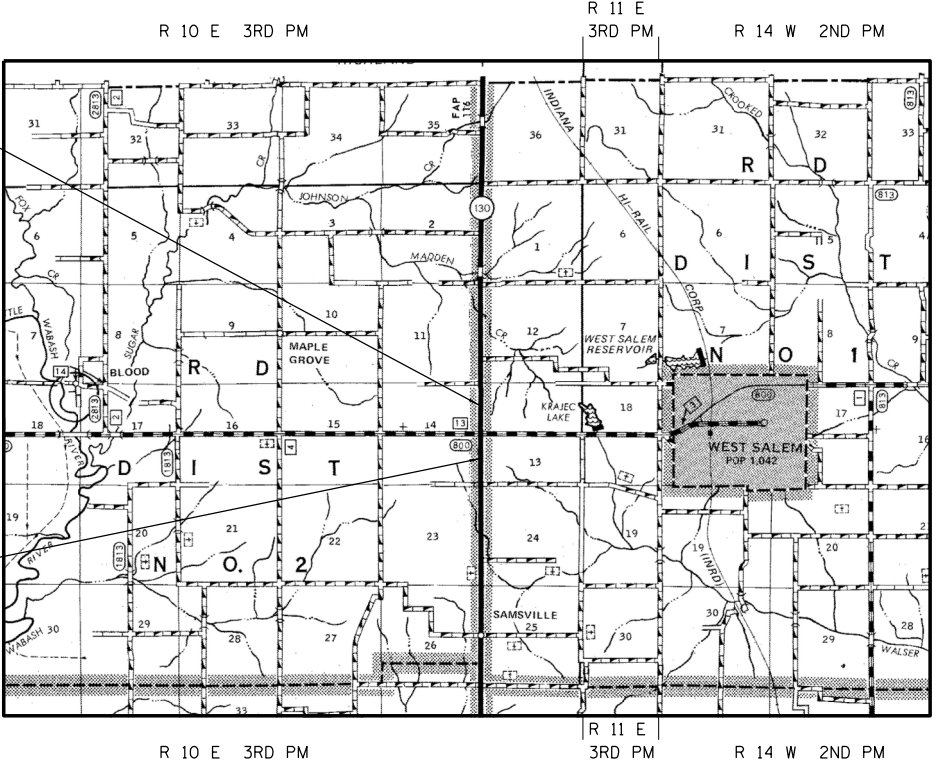
R-97-004-11



R-97-004-11

FAP ROUTE 116  
SECTION (126,127)RS-5  
EDWARDS COUNTY  
BEGINS STA. 810+00.00

FAP ROUTE 116  
SECTION (126,127)RS-5  
EDWARDS COUNTY  
ENDS STA. 826+50.00



FULL SIZE PLANS HAVE BEEN PREPARED USING STANDARD ENGINEERING SCALES. REDUCED SIZED PLANS WILL NOT CONFORM TO STANDARD SCALES. IN MAKING MEASUREMENTS ON REDUCED PLANS, THE ABOVE SCALES MAY BE USED.

J.U.L.I.E.  
JOINT UTILITY LOCATION INFORMATION FOR EXCAVATION  
1-800-892-0123  
OR 811

GROSS LENGTH = 1650 FT. = 0.313 MILE  
NET LENGTH = 1650 FT. = 0.313 MILE

CONTRACT NO. 74247

**STATE OF ILLINOIS**  
**DEPARTMENT OF TRANSPORTATION**  
**DIVISION OF HIGHWAYS**

SUBMITTED \_\_\_\_\_ 20 \_\_\_\_\_  
DEPUTY DIRECTOR OF HIGHWAYS, REGION ENGINEER

\_\_\_\_\_ 20 \_\_\_\_\_  
ENGINEER OF DESIGN AND ENVIRONMENT

\_\_\_\_\_ 20 \_\_\_\_\_  
DIRECTOR OF HIGHWAYS, CHIEF ENGINEER

**PRINTED BY THE AUTHORITY**  
**OF THE STATE OF ILLINOIS**