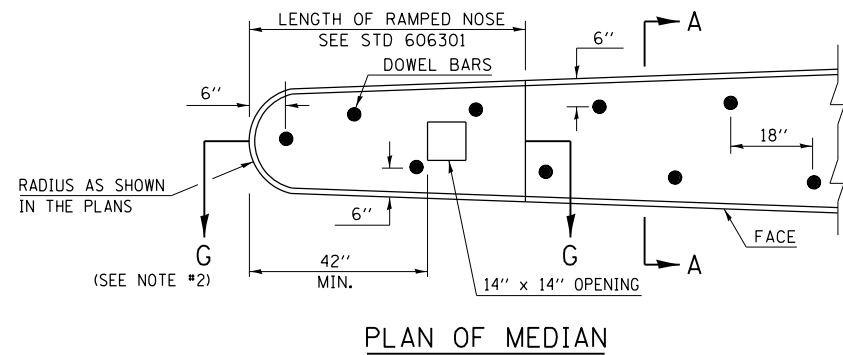
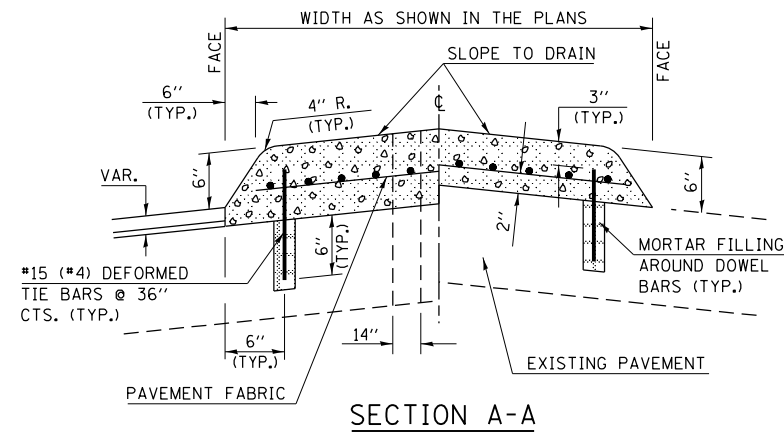
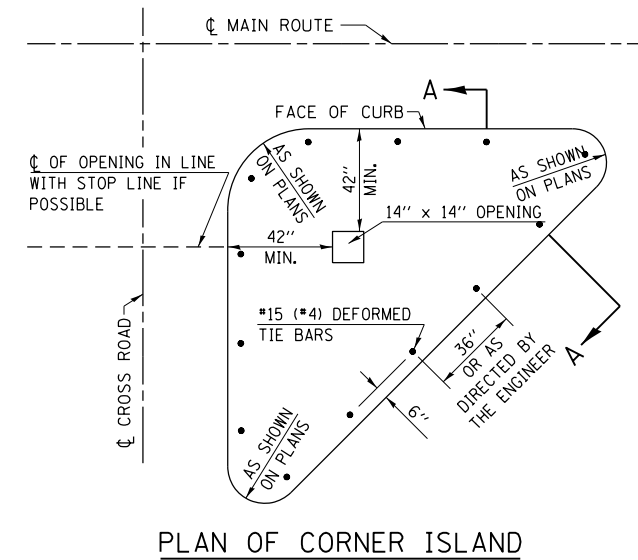


DETAIL OF CONCRETE MEDIAN, TYPE SM-6 (SM-15) (DOWELED)



- ### GENERAL NOTES
1. THE GENERAL NOTES FOR STANDARD 606301 SHALL APPLY.
 2. SECTION G-G SHALL BE THE SAME AS SHOWN ON STANDARD 606301.
 3. DOWEL BARS @ 36" CTS. OR AS DIRECTED BY THE ENGINEER.
 4. THIS WORK WILL BE PAID FOR AT THE CONTRACT UNIT PRICE PER SQ FOOT FOR CONCRETE MEDIAN, TYPE SM-6 (SM-15) (DOWELED), INCLUDING THE COST OF FURNISHING AND INSTALLING THE DOWEL BARS, MORTAR FILLING, PAVEMENT FABRIC AND THE REMOVAL AND DISPOSAL OF THE EXISTING PAVEMENT FOR THE 14" x 14" OPENING, IF REQUIRED, AND NO ADDITIONAL COMPENSATION WILL BE ALLOWED.



FILE NAME =	USER NAME = steffenmk	DESIGNED -	REVISED -	STATE OF ILLINOIS DEPARTMENT OF TRANSPORTATION	CONCRETE MEDIAN, TYPE SM-6 (SM15) (DOWELLED)	F.A.P. RTE.	SECTION	COUNTY	TOTAL SHEETS	SHEET NO.	
	ci:\pw_work\p\dot\steffenmk\d030911\d774567-shd-details.dgn	DRAWN -	REVISED -			116	126N	EDWARDS	71	42	
	PLOT SCALE = 100.0000' / 1in.	CHECKED -	REVISED -			CONTRACT NO. 74567					
Default	PLOT DATE = 3/18/2013	DATE -	REVISED -			SCALE: N/A	SHEET 1 OF 1 SHEETS	STA.	TO STA.	ILLINOIS FED. AID PROJECT	