

STATE OF ILLINOIS
DEPARTMENT OF TRANSPORTATION
DIVISION OF HIGHWAYS

**PROPOSED
HIGHWAY PLANS**

F.A.P. ROUTE 327 (U.S. 50)
SECTION D7 BRIDGE REPAIRS 2014-1

BRIDGE REPAIRS
CLAY COUNTY

C-97-131-12

F.A.P. RTE.	SECTION	COUNTY	TOTAL SHEETS	SHEET NO.
327		CLAY	49	1
		ILLINOIS	CONTRACT NO. 74600	

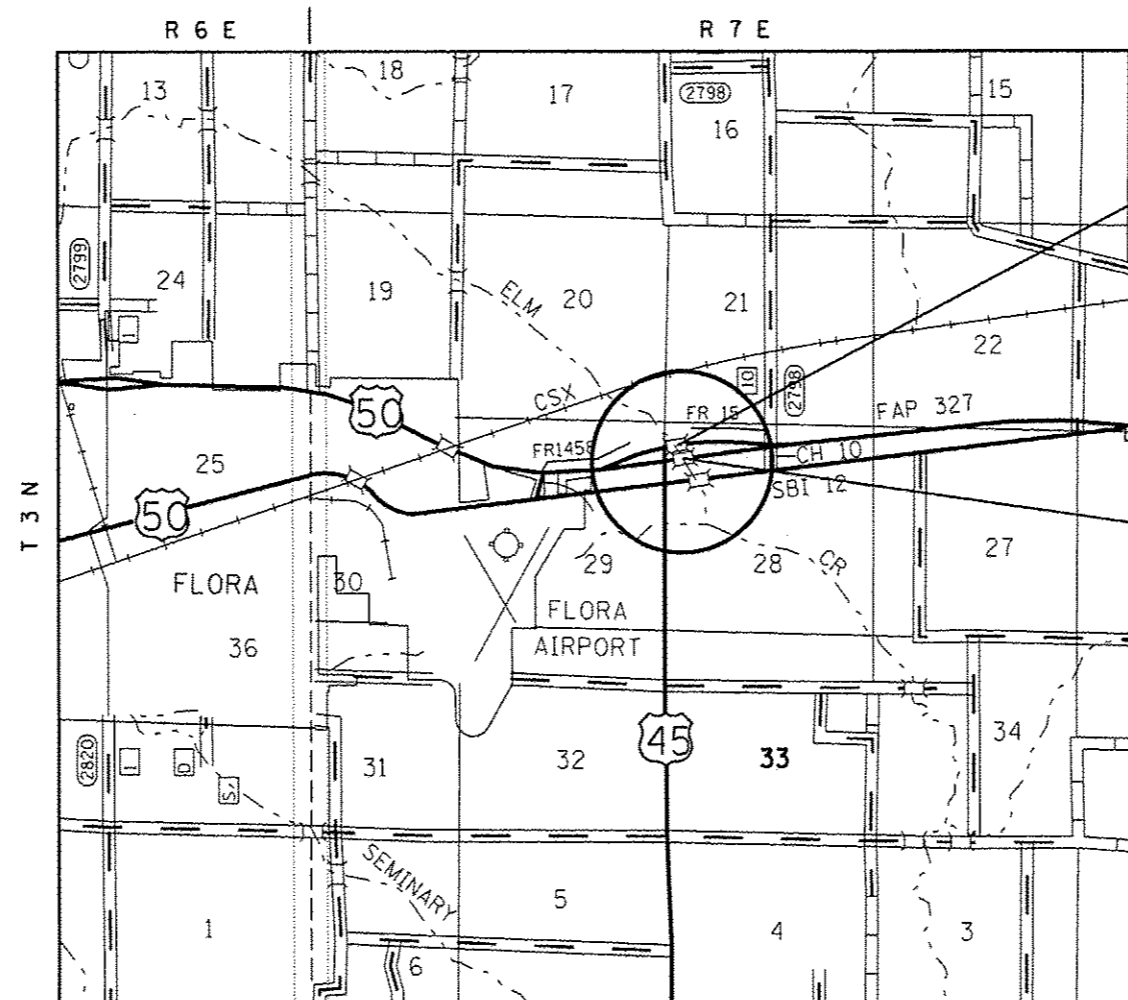
* D7 Bridge Repairs 2014-1

D-97-063-12



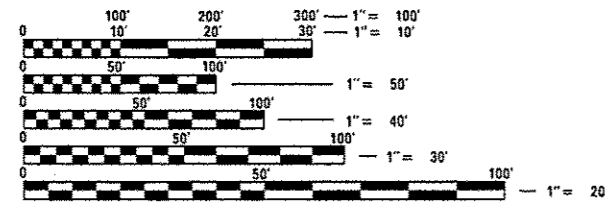
FOR INDEX OF SHEETS, SEE SHEET NO. 2

ADT = 5100



S.N. 013-0003 (WB)

S.N. 013-0002 (EB)



FULL SIZE PLANS HAVE BEEN PREPARED USING STANDARD ENGINEERING SCALES. REDUCED SIZED PLANS WILL NOT CONFORM TO STANDARD SCALES. IN MAKING MEASUREMENTS ON REDUCED PLANS, THE ABOVE SCALES MAY BE USED.

J.U.L.I.E.
JOINT UTILITY LOCATION INFORMATION FOR EXCAVATION
1-800-892-0123
OR 811

PROJECT ENGINEER: TOM RONAN
PROJECT MANAGER: ROSS BIERMAN
PHONE: 217-342-8320
CONTRACT NO. 74600

GROSS LENGTH = 190 FT. = .036 MILE
NET LENGTH = 190 FT. = .036 MILE

STATE OF ILLINOIS
DEPARTMENT OF TRANSPORTATION
DIVISION OF HIGHWAYS

SUBMITTED MARCH 28 20 13
Roger L. Oriskany
DEPUTY DIRECTOR OF HIGHWAYS, REGION ENGINEER

May 10 20 13
John D. Baranzelli PE
acting ENGINEER OF DESIGN AND ENVIRONMENT

May 10 20 13
Orker Osman PE
DIRECTOR OF HIGHWAYS, CHIEF ENGINEER

PRINTED BY THE AUTHORITY
OF THE STATE OF ILLINOIS