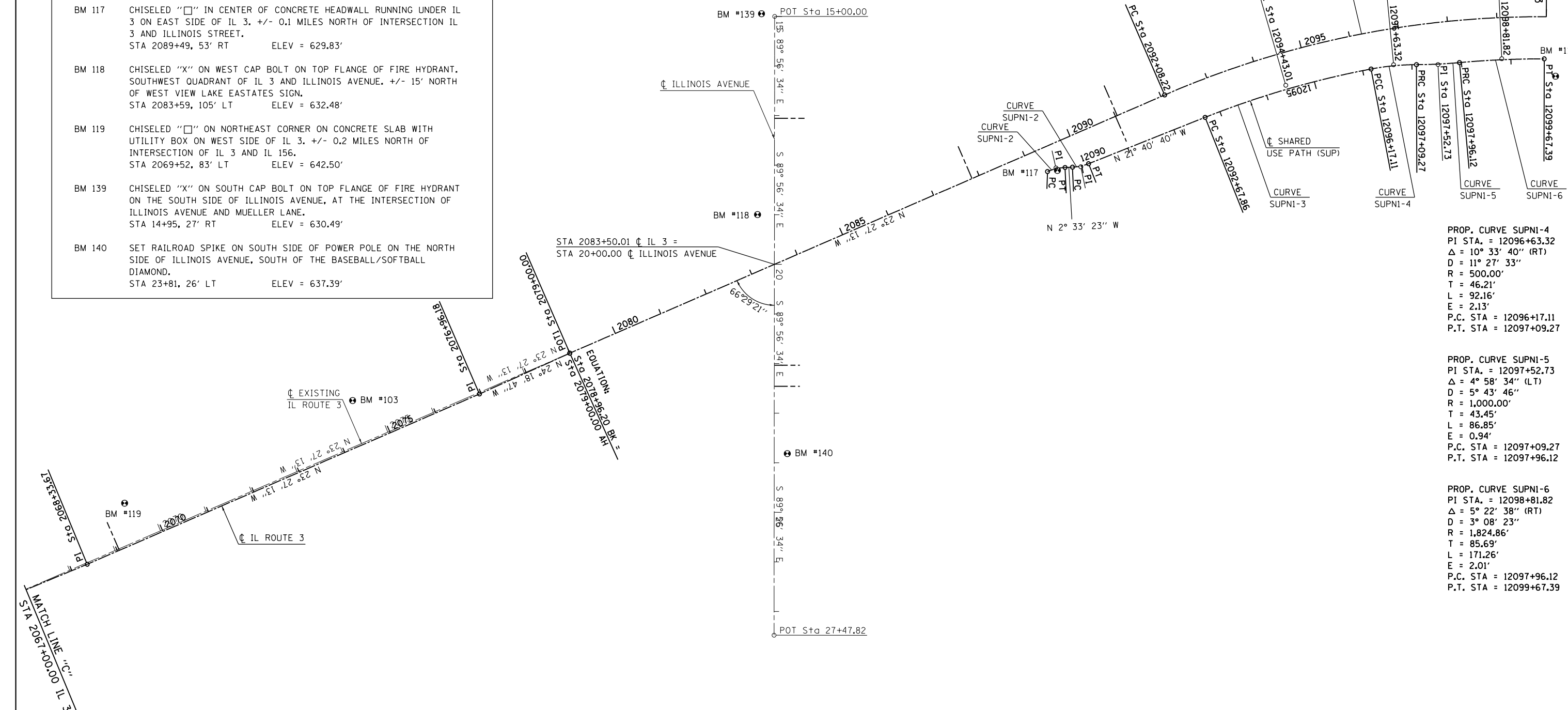


BENCHMARKS

BM 103	FOUND CUT "□" ON SOUTHEAST CORNER OF CONCRETE BOX CULVERT LOCATED ON WEST SIDE OF IL 3. +/- 0.3 MILES NORTH OF INTERSECTION OF IL 3 AND IL 156. STA 2074+56, 90' LT ELEV = 620.68'
BM 116	CHISELED "X" ON SOUTH CAP BOLT ON TOP FLANGE OF FIRE HYDRANT, SOUTHEAST QUADRANT OF INTERSECTION OF IL 3 AND COLUMBIA AVENUE ON EAST SIDE OF IL 3. STA 2100+20, 120' RT ELEV = 641.51'
BM 117	CHISELED "□" IN CENTER OF CONCRETE HEADWALL RUNNING UNDER IL 3 ON EAST SIDE OF IL 3. +/- 0.1 MILES NORTH OF INTERSECTION IL 3 AND ILLINOIS STREET. STA 2089+49, 53' RT ELEV = 629.83'
BM 118	CHISELED "X" ON WEST CAP BOLT ON TOP FLANGE OF FIRE HYDRANT, SOUTHWEST QUADRANT OF IL 3 AND ILLINOIS AVENUE. +/- 15' NORTH OF WEST VIEW LAKE ESTATES SIGN. STA 2083+59, 105' LT ELEV = 632.48'
BM 119	CHISELED "□" ON NORTHEAST CORNER ON CONCRETE SLAB WITH UTILITY BOX ON WEST SIDE OF IL 3. +/- 0.2 MILES NORTH OF INTERSECTION OF IL 3 AND IL 156. STA 2069+52, 83' LT ELEV = 642.50'
BM 139	CHISELED "X" ON SOUTH CAP BOLT ON TOP FLANGE OF FIRE HYDRANT ON THE SOUTH SIDE OF ILLINOIS AVENUE, AT THE INTERSECTION OF ILLINOIS AVENUE AND MUELLER LANE. STA 14+95, 27' RT ELEV = 630.49'
BM 140	SET RAILROAD SPIKE ON SOUTH SIDE OF POWER POLE ON THE NORTH SIDE OF ILLINOIS AVENUE, SOUTH OF THE BASEBALL/SOFTBALL DIAMOND. STA 23+81, 26' LT ELEV = 637.39'

PROP. CURVE IL3CUR5
 PI STA. = 2103+71.37
 Δ = 62° 41' 06" (RT)
 D = 3° 00' 00"
 R = 1,909.86'
 T = 1,163.15'
 L = 2,089.50'
 E = 326.32'
 e = 4.0%
 T.R. = 52'
 S.E. RUN = 155'
 P.C. STA = 2092+08.22
 P.T. STA = 2112+97.72



PROP. CURVE SUPNI-4
 PI STA. = 12096+63.32
 Δ = 10° 33' 40" (RT)
 D = 11° 27' 33"
 R = 500.00'
 T = 46.21'
 L = 92.16'
 E = 2.13'
 P.C. STA = 12096+17.11
 P.T. STA = 12097+09.27

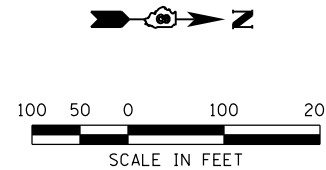
PROP. CURVE SUPNI-5
 PI STA. = 12097+52.73
 Δ = 4° 58' 34" (LT)
 D = 5° 43' 46"
 R = 1,000.00'
 T = 43.45'
 L = 86.85'
 E = 0.94'
 P.C. STA = 12097+09.27
 P.T. STA = 12097+96.12

PROP. CURVE SUPNI-6
 PI STA. = 12098+81.82
 Δ = 5° 22' 38" (RT)
 D = 3° 08' 23"
 R = 1,824.86'
 T = 85.69'
 L = 171.26'
 E = 2.01'
 P.C. STA = 12097+96.12
 P.T. STA = 12099+67.39

PROP. CURVE SUPNI-1
 PI STA. = 12089+48.44
 Δ = 20° 53' 50" (RT)
 D = 57° 17' 45"
 R = 100.00'
 T = 18.44'
 L = 36.47'
 E = 1.69'
 P.C. STA = 12089+30.00
 P.T. STA = 12089+66.47

PROP. CURVE SUPNI-2
 PI STA. = 12089+98.32
 Δ = 19° 07' 17" (LT)
 D = 57° 17' 45"
 R = 100.00'
 T = 16.84'
 L = 33.37'
 E = 1.41'
 P.C. STA = 12089+81.47
 P.T. STA = 12090+14.85

PROP. CURVE SUPNI-3
 PI STA. = 12094+43.01
 Δ = 10° 53' 38" (RT)
 D = 3° 07' 09"
 R = 1,836.86'
 T = 175.15'
 L = 349.25'
 E = 8.33'
 P.C. STA = 12092+67.86
 P.T. STA = 12096+17.11



LAST SAVED = 1/25/2013 3:29:06 PM
 PEN TABLE = W:\44444444
 PLOT DRIVER = pdfplotlayers\pltdrvr.pdf

FILE NAME =	USER NAME = beriechmann	DESIGNED -	REVISED -
I:\10011000\Phase II - 76817\Cad\T\Plans\006_0876817-sht-ATB-4.dgn		DRAWN -	REVISED -
		CHECKED -	REVISED -
PLOT DATE = 1/25/2013 3:29:06 PM		DATE -	REVISED -

**STATE OF ILLINOIS
 DEPARTMENT OF TRANSPORTATION**

**HORNER &
 SHIRIN, INC.
 ENGINEERS**

ALIGNMENTS, TIES, AND BENCHMARKS

SCALE: 1" = 100' SHEET NO. 4 OF 20 SHEETS STA. 2067+00.00 TO STA. 2100+00.00

F.A.P. RTE.	SECTION	COUNTY	TOTAL SHEETS	SHEET NO.
312	68-WRS-1	MONROE	760	84
CONTRACT NO. 76817			ILLINOIS FED. AID PROJECT	