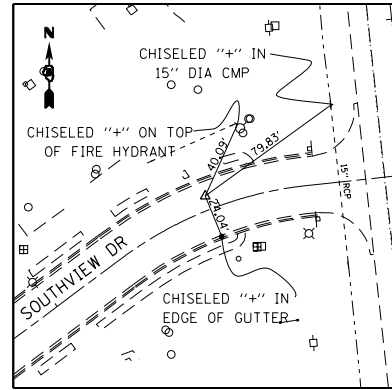
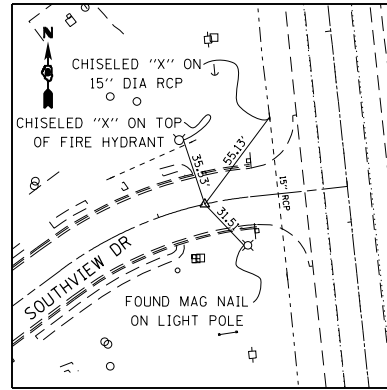


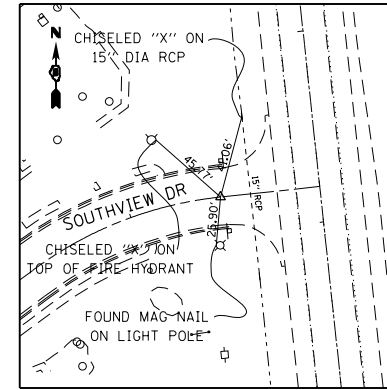
SOUTHVIEW DR
P.T. STA 51+58.44
MAG NAIL
603,248.0376 N
2,300,252.0251 E



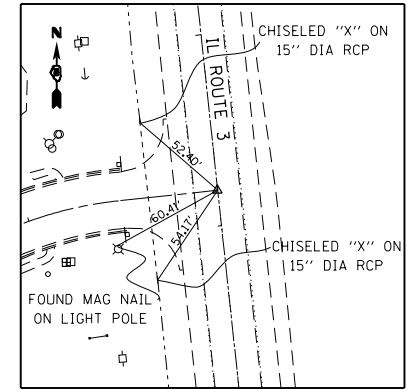
SOUTHVIEW DR
P.I. STA 51+06.50
MAG NAIL
603,280.6812 N
2,300,295.7627 E



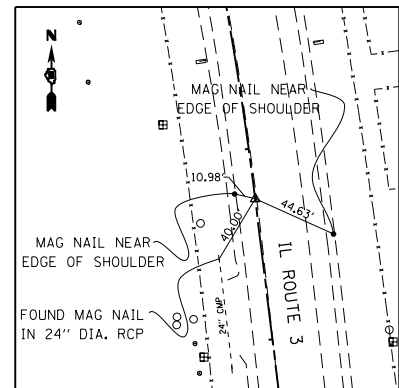
SOUTHVIEW DR
END PROJECT STA 50+74.91
CHISELED 'X' IN CONCRETE
603,282.6200 N
2,300,327.3760 E



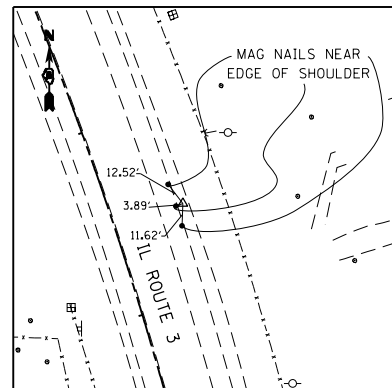
SOUTHVIEW DR
P.C. STA 50+51.93
FOUND MAG NAIL
603,286.3110 N
2,300,350.0480 E



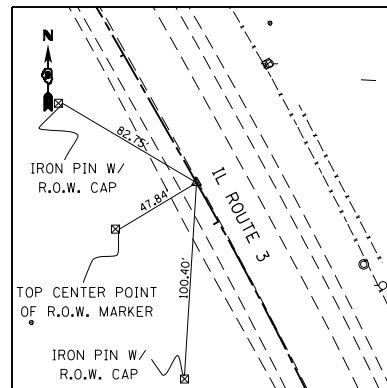
SOUTHVIEW RD P.O.T. STA 50+00.28
IL ROUTE 3 P.O.T. STA 2024+18.55
FOUND MAG NAIL
603,291.8080 N
2,300,401.4010 E



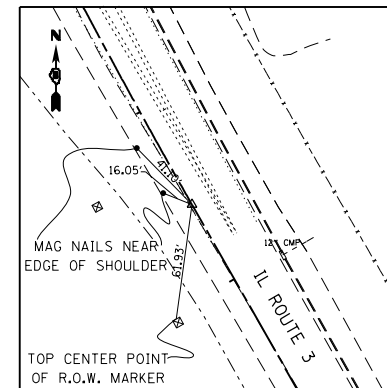
IL ROUTE 3
P.C. STA 2032+73.70
FOUND MAG NAIL
604,140.5430 N
2,300,296.8990 E



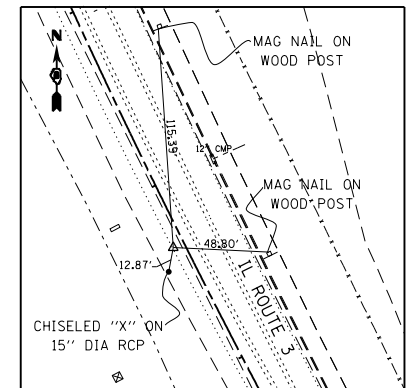
IL ROUTE 3
P.I. STA 2036+53.48
FOUND IRON PIN
604,517.4830 N
2,300,250.4890 E



IL ROUTE 3
P.T. STA 2040+23.36
FOUND MAG NAIL
604,847.4990 N
2,300,062.5340 E



IL ROUTE 3
P.C. STA 2050+44.73
FOUND MAG NAIL
605,735.0230 N
2,299,557.0580 E



IL ROUTE 3
P.I. STA 2052+67.12
FOUND MAG NAIL
605,928.2640 N
2,299,447.0000 E

LAST SAVED = 1/25/2013
PEN TABLE = 1/25/2013
PLOT DRIVER = pdfNCLAYERShp.pltcf9

FILE NAME =	USER NAME = beriechmann	DESIGNED -	REVISED -
I:\1001100\Phase II - 76817\Cad\T\Plans\007_0876817-shr-ATB-14.dgn		DRAWN -	REVISED -
	PLOT SCALE = 100.0000' / 1"	CHECKED -	REVISED -
	PLOT DATE = 1/25/2013 3:29:15 PM	DATE -	REVISED -

STATE OF ILLINOIS
DEPARTMENT OF TRANSPORTATION

HORNER &
SHIRIN, INC.
ENGINEERS

ALIGNMENTS, TIES, AND BENCHMARKS

SCALE: NONE

SHEET NO. 14 OF 20 SHEETS

STA.

TO STA.

F.A.P. RTE.	SECTION	COUNTY	TOTAL SHEETS	SHEET NO.
312	68-WRS-1	MONROE	760	94
CONTRACT NO. 76817			ILLINOIS FED. AID PROJECT	