
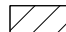

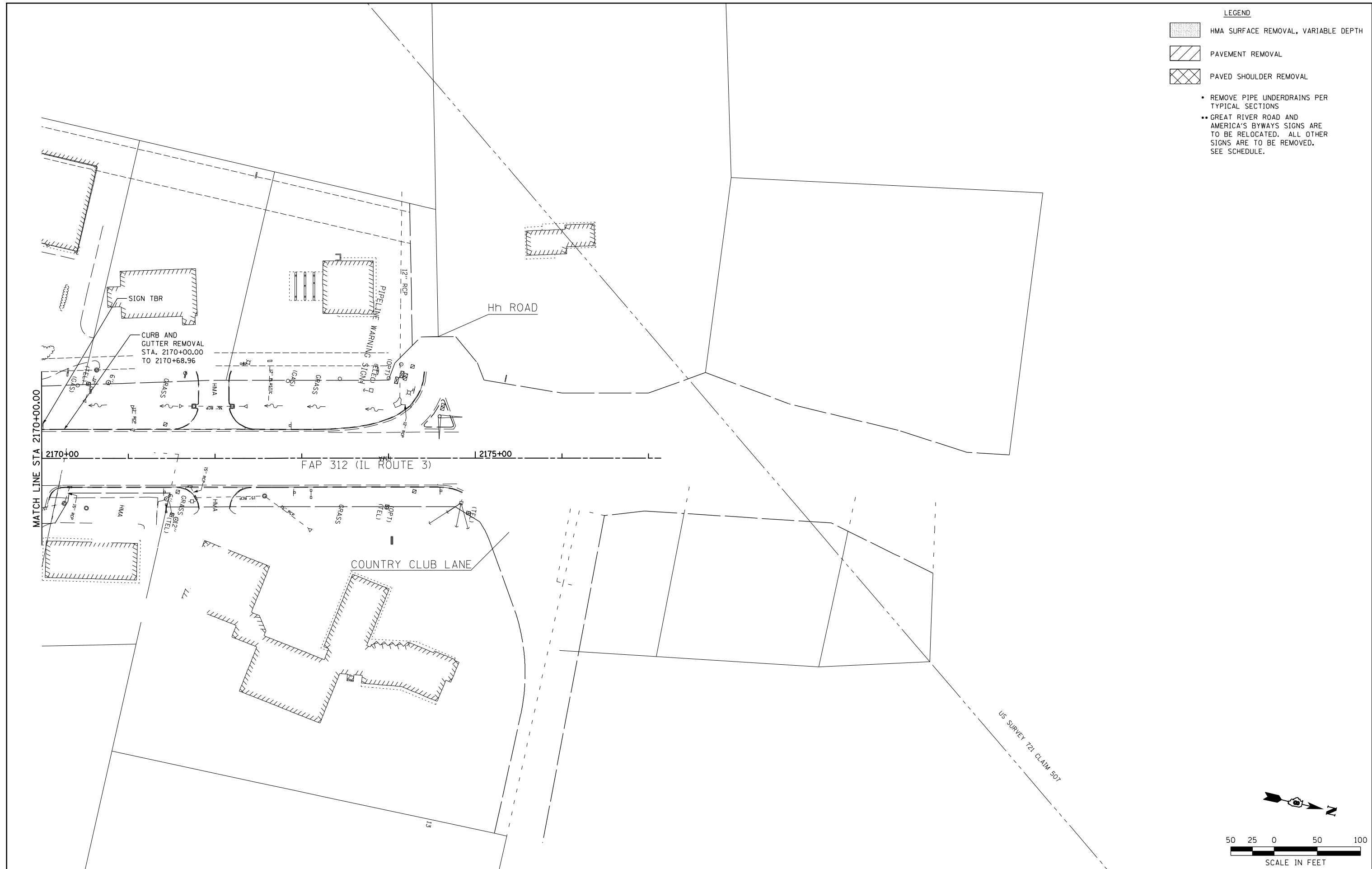


LEGEND

-  HMA SURFACE REMOVAL, VARIABLE DEPTH
-  PAVEMENT REMOVAL
-  PAVED SHOULDER REMOVAL

- REMOVE PIPE UNDERDRAINS PER TYPICAL SECTIONS
- GREAT RIVER ROAD AND AMERICA'S BYWAYS SIGNS ARE TO BE RELOCATED. ALL OTHER SIGNS ARE TO BE REMOVED. SEE SCHEDULE.



FILE NAME =	USER NAME = Richard Heinke	DESIGNED - JAH	REVISED -
F:\Projects\IDOT PROJECTS\09-101-11.4\Drawings\CADD Sheets\Contract 2\164.D876817-sh		DRAWN - RNH	REVISED -
		CHECKED - TMM	REVISED -
		DATE -	REVISED -

**STATE OF ILLINOIS
DEPARTMENT OF TRANSPORTATION**

McDonough-Whillow, P.C.
PROFESSIONAL DESIGN NO. 184-002754

REMOVAL PLAN
IL ROUTE 3

SCALE: 1" = 50' SHEET NO. 14 OF 19 SHEETS STA. 2170+00.00 TO STA. 2170+68.96

F.A.P. RTE.	SECTION	COUNTY	TOTAL SHEETS	SHEET NO.
312	68-WRS-1	MONROE	760	154
				CONTRACT NO. 76817
ILLINOIS FED. AID PROJECT				