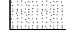
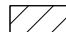

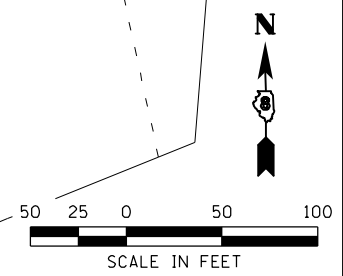
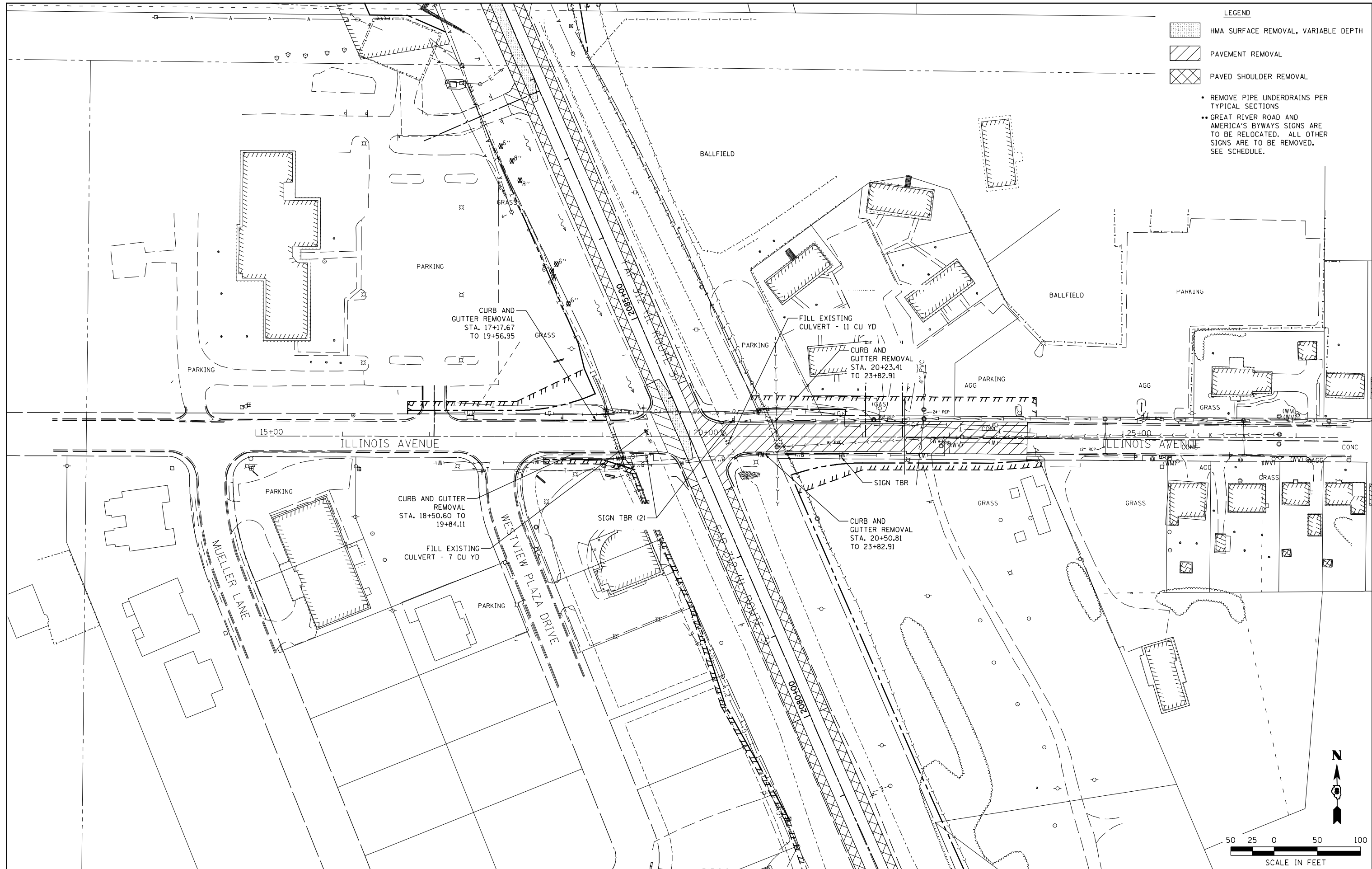


LEGEND

-  HMA SURFACE REMOVAL, VARIABLE DEPTH
-  PAVEMENT REMOVAL
-  PAVED SHOULDER REMOVAL

- REMOVE PIPE UNDERDRAINS PER TYPICAL SECTIONS
- GREAT RIVER ROAD AND AMERICA'S BYWAYS SIGNS ARE TO BE RELOCATED. ALL OTHER SIGNS ARE TO BE REMOVED. SEE SCHEDULE.



FILE NAME = F:\Projects\IDOT PROJECTS\09-101-11.4\Drawings\CADD Sheets\Contract 2\167.0876817-sh

USER NAME = Richard Heinke
 DESIGNED - JAH
 DRAWN - RNH
 CHECKED - TMM
 DATE - 1/24/2013

DESIGNED - JAH
 DRAWN - RNH
 CHECKED - TMM
 DATE -

REVISED -
 REVISED -
 REVISED -
 REVISED -

**STATE OF ILLINOIS
 DEPARTMENT OF TRANSPORTATION**

McDonough-Whillow, P.C.
 PROFESSIONAL DESIGN NO. 184-002754
 SCALE: 1" = 50'

**REMOVAL PLAN
 ILLINOIS AVENUE**
 SHEET NO. 17 OF 19 SHEETS
 STA. TO STA.

F.A.P. RTE.	SECTION	COUNTY	TOTAL SHEETS	SHEET NO.
312	68-WRS-1	MONROE	760	157
CONTRACT NO. 76817				
ILLINOIS FED. AID PROJECT				