
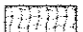
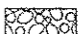



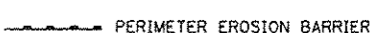
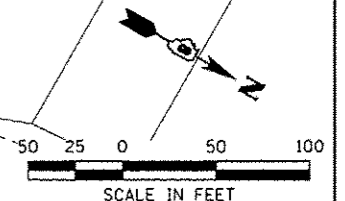
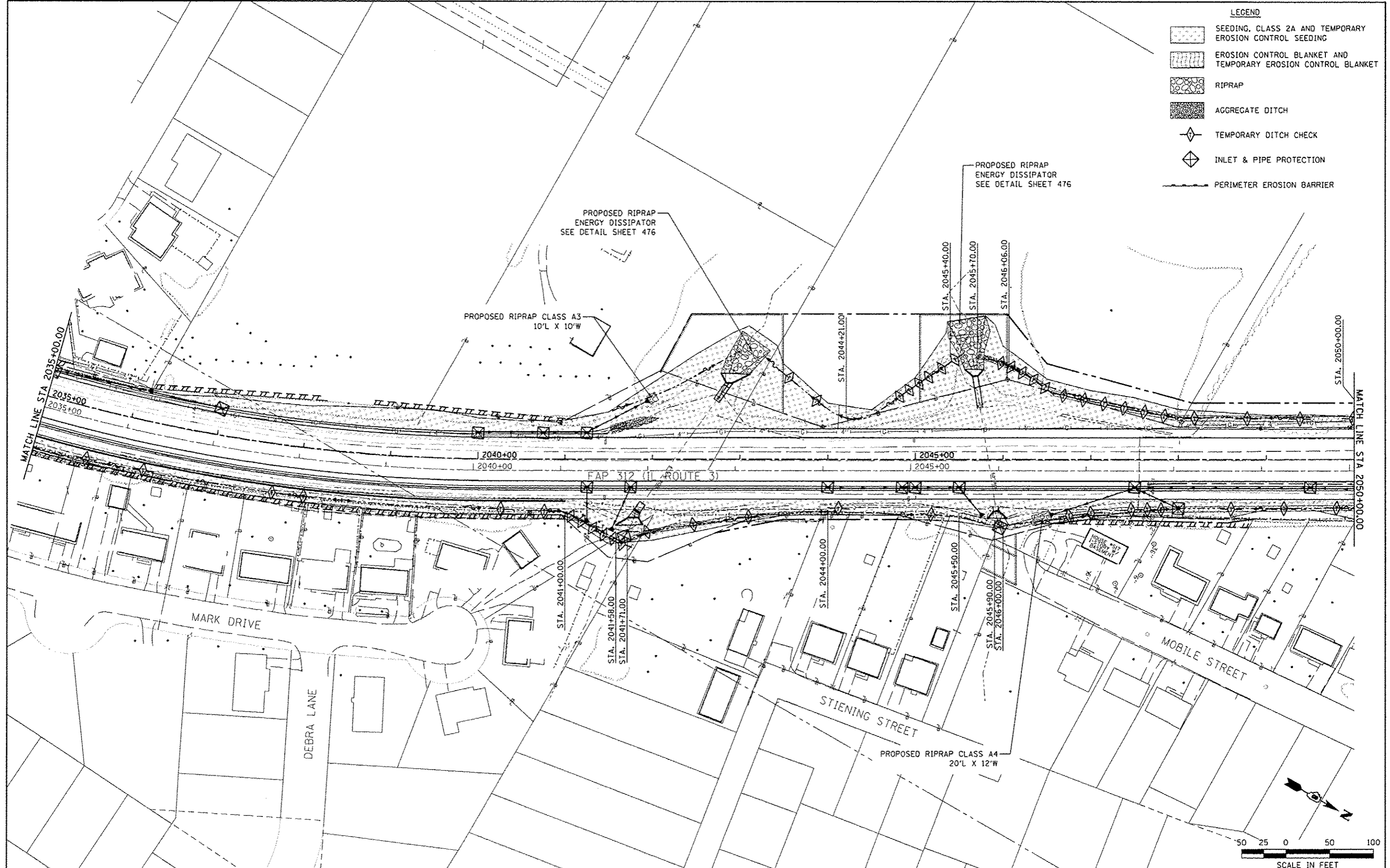
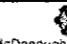


LEGEND

-  SEEDING, CLASS 2A AND TEMPORARY EROSION CONTROL SEEDING
-  EROSION CONTROL BLANKET AND TEMPORARY EROSION CONTROL BLANKET
-  RIPRAP
-  AGGREGATE DITCH
-  TEMPORARY DITCH CHECK
-  INLET & PIPE PROTECTION
-  PERIMETER EROSION BARRIER



FILE NAME <small>F:\Projects\1001 PROJECTS\101-181-11.4\0</small>	USER NAME <small>Richard Hainke</small>	DESIGNED JAH	REVISED 4 8 13	STATE OF ILLINOIS DEPARTMENT OF TRANSPORTATION	 <small>McDonough-Willow, P.C. PROFESSIONAL DESIGN NO. 184-002754</small>	EROSION CONTROL PLAN IL ROUTE 3	F.A.P. RTE. 312	SECTION 68-WRS-1	COUNTY MONROE	TOTAL SHEETS 760	SHEET NO. 213
PLOT SCALE <small>1/8" = 1' / in.</small>	CHECKED TMM	DATE -	REVISED -	SCALE: 1" = 50'	SHEET NO. 5 OF 19 SHEETS	STA. 2035+00.00 TO STA. 2050+00.00	CONTRACT NO. 76B17		<small>ILLINOIS FED. AID PROJECT</small>		