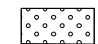



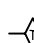

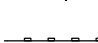
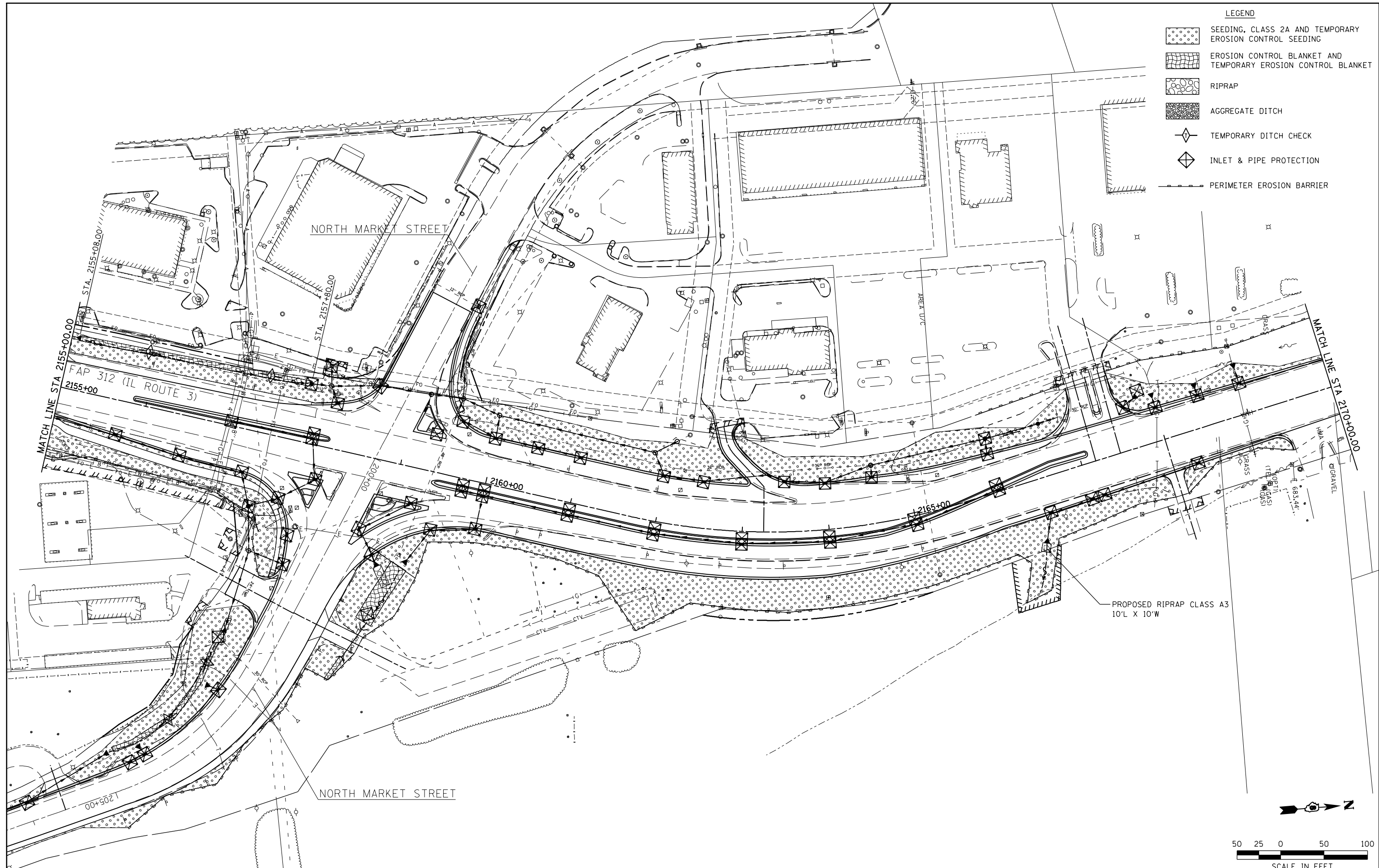


LEGEND


-  SEEDING, CLASS 2A AND TEMPORARY EROSION CONTROL SEEDING
-  EROSION CONTROL BLANKET AND TEMPORARY EROSION CONTROL BLANKET
-  RIPRAP
-  AGGREGATE DITCH
-  TEMPORARY DITCH CHECK
-  INLET & PIPE PROTECTION
-  PERIMETER EROSION BARRIER



PROPOSED RIPRAP CLASS A3
10'L X 10'W



SCALE IN FEET

FILE NAME =	USER NAME = Richard Heinke	DESIGNED - JAH	REVISED -	STATE OF ILLINOIS DEPARTMENT OF TRANSPORTATION	 McDonough-Whillow, P.C. PROFESSIONAL DESIGN NO. 184-002754	EROSION CONTROL PLAN IL ROUTE 3	F.A.P. RTE. 312	SECTION 68-WRS-1	COUNTY MONROE	TOTAL SHEETS 760	SHEET NO. 221		
		DRAWN - RNH	REVISED -				CONTRACT NO. 76817						
	PLOT SCALE = 100.0000' / in.	CHECKED - TMM	REVISED -				ILLINOIS FED. AID PROJECT						
	PLOT DATE = 1/24/2013	DATE -	REVISED -				SHEET NO. 13 OF 19 SHEETS STA. 2155+00.00 TO STA. 2170+00.00						