

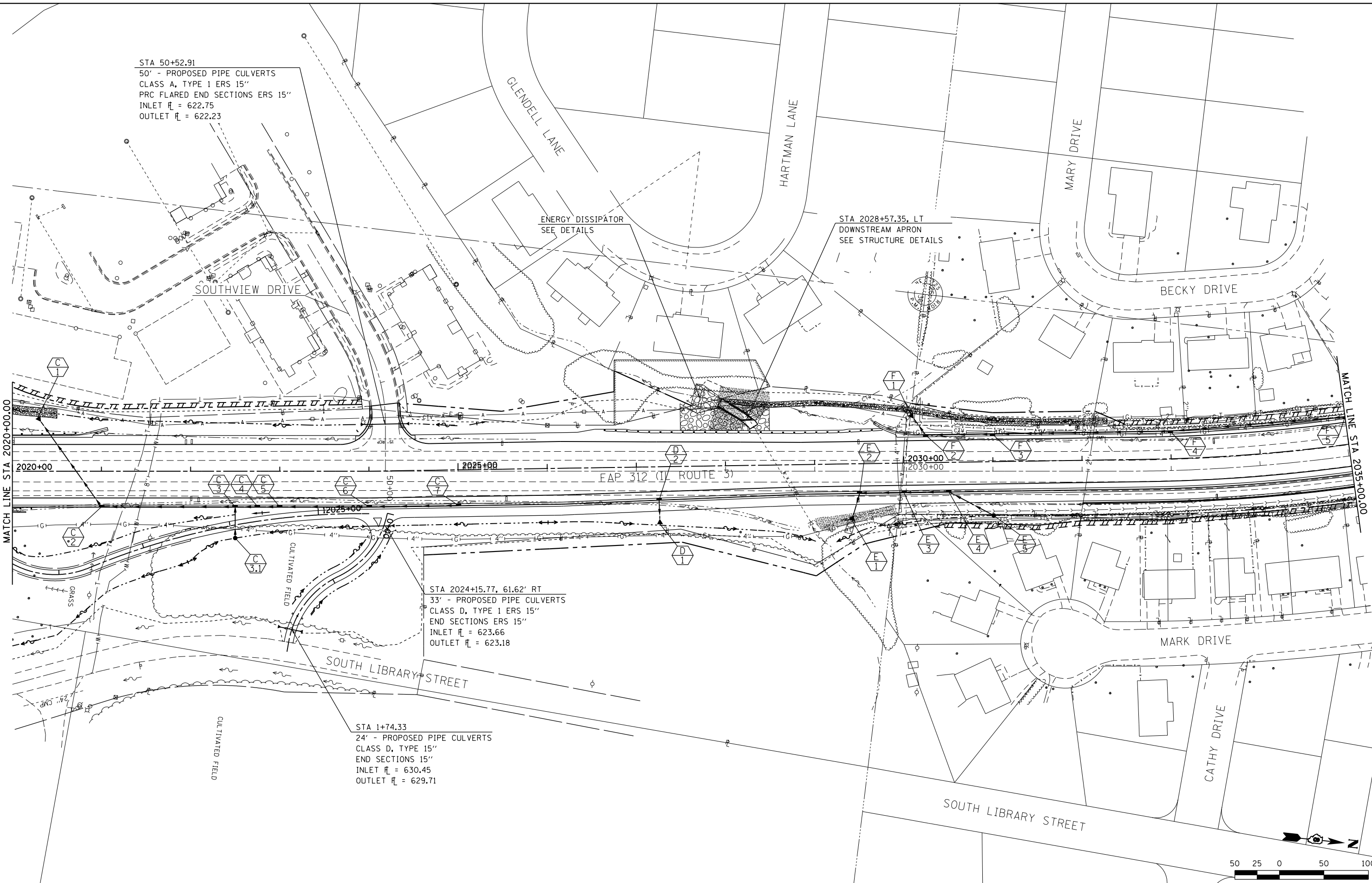
STA 50+52.91
 50' - PROPOSED PIPE CULVERTS
 CLASS A, TYPE 1 ERS 15"
 PRC FLARED END SECTIONS ERS 15"
 INLET ℓ = 622.75
 OUTLET ℓ = 622.23

ENERGY DISSIPATOR
 SEE DETAILS

STA 2028+57.35, LT
 DOWNSTREAM APRON
 SEE STRUCTURE DETAILS

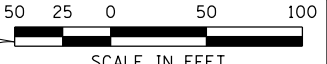
STA 2024+15.77, 61.62' RT
 33' - PROPOSED PIPE CULVERTS
 CLASS D, TYPE 1 ERS 15"
 END SECTIONS ERS 15"
 INLET ℓ = 623.66
 OUTLET ℓ = 623.18

STA 1+74.33
 24' - PROPOSED PIPE CULVERTS
 CLASS D, TYPE 15"
 END SECTIONS 15"
 INLET ℓ = 630.45
 OUTLET ℓ = 629.71



MATCH LINE STA 2020+00.00

MATCH LINE STA 2035+00.00



LAST SAVED = 1/23/2013 10:24:41 AM
 PEN TABLE = W24x44x41
 PLOT DRIVER = pdfnclayers.pltcf9

FILE NAME =	USER NAME = beriechmann	DESIGNED -	REVISED -
1:\1001100\Phase II - 76817\Cad\T\Plans\074_0876817-sht-drain-03.dgn		DRAWN -	REVISED -
PLOT SCALE = 100.0000' / in.		CHECKED -	REVISED -
PLOT DATE = 1/25/2013 3:31:47 PM		DATE -	REVISED -

STATE OF ILLINOIS
DEPARTMENT OF TRANSPORTATION

HORNER & SHIRIN, INC.
ENGINEERS

DRAINAGE AND UTILITIES PLAN
 IL ROUTE 3

SCALE: 1" = 50' SHEET NO. 3 OF 15 SHEETS STA. 2020+00.00 TO STA. 2035+00.00

F.A.P. RTE.	SECTION	COUNTY	TOTAL SHEETS	SHEET NO.
312	68-WRS-1	MONROE	760	230
CONTRACT NO. 76817				
ILLINOIS FED. AID PROJECT				