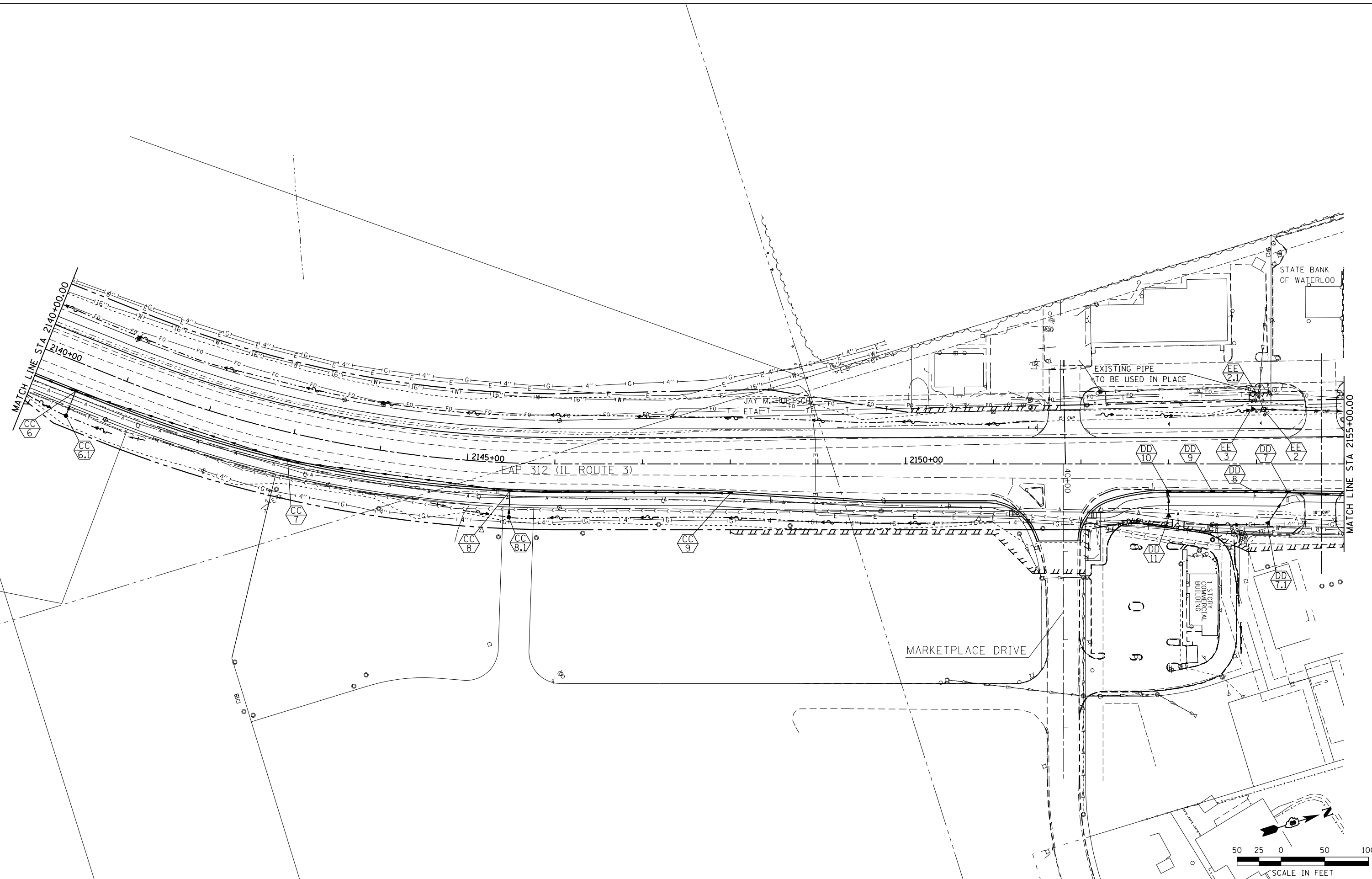


LAST SAVED = 1/23/2013
 PEN TABLE = 10244141
 PLOT DRIVER = pdfnclayers.pltcf9



FILE NAME =	USER NAME = beriechmann	DESIGNED -	REVISED -
I:\1001100\Phase II - 76817\Cad\T\Plans\074_0876817-sht-drain-11.dgn		DRAWN -	REVISED -
		CHECKED -	REVISED -
PLOT DATE = 1/25/2013 3:31:58 PM		DATE -	REVISED -

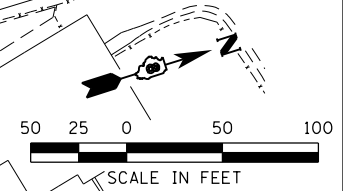
STATE OF ILLINOIS
 DEPARTMENT OF TRANSPORTATION

HORNER & SHIRIN, INC.
 ENGINEERS

DRAINAGE AND UTILITIES PLAN
 IL ROUTE 3

F.A.P. RTE.	SECTION	COUNTY	TOTAL SHEETS	SHEET NO.
312	68-WRS-1	MONROE	760	238
CONTRACT NO. 76817				

SCALE: 1" = 50' SHEET NO. 11 OF 15 SHEETS STA. 2140+00.00 TO STA. 2155+00.00



ILLINOIS FED. AID PROJECT