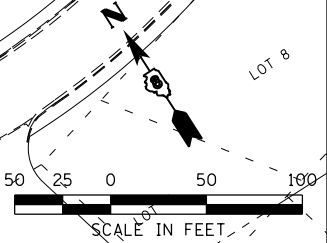


STA 201+98.81, 75.36' LT
 40' - PROPOSED PRECAST CONCRETE BOX CULVERTS 5'X5'
 2 - BOX CULVERT END SECTIONS, CULVERT NO. 3
 INLET ℓ = 668.57
 OUTLET ℓ = 667.87

BRIAN T. CHRISTOPHER



LAST SAVED = 1/24/2013
 PEN TABLE = V8-444-441
 PLOT DRIVER = pdfplotlayershwatcf9

FILE NAME =	USER NAME = beriechmann	DESIGNED -	REVISED -
1:\1001100\Phase II - 76817\Cad\T\Plans\074_0876817-sht-drain-15.dgn		DRAWN -	REVISED -
		CHECKED -	REVISED -
PLOT DATE = 1/25/2013 3:32:02 PM		DATE -	REVISED -

**STATE OF ILLINOIS
 DEPARTMENT OF TRANSPORTATION**



**DRAINAGE AND UTILITIES PLAN
 NORTH MARKET ST.**

F.A.P. RTE.	SECTION	COUNTY	TOTAL SHEETS	SHEET NO.
312	68-WRS-1	MONROE	760	242
CONTRACT NO. 76817				

SCALE: 1" = 50' SHEET NO. 15 OF 15 SHEETS STA. TO STA.

ILLINOIS FED. AID PROJECT