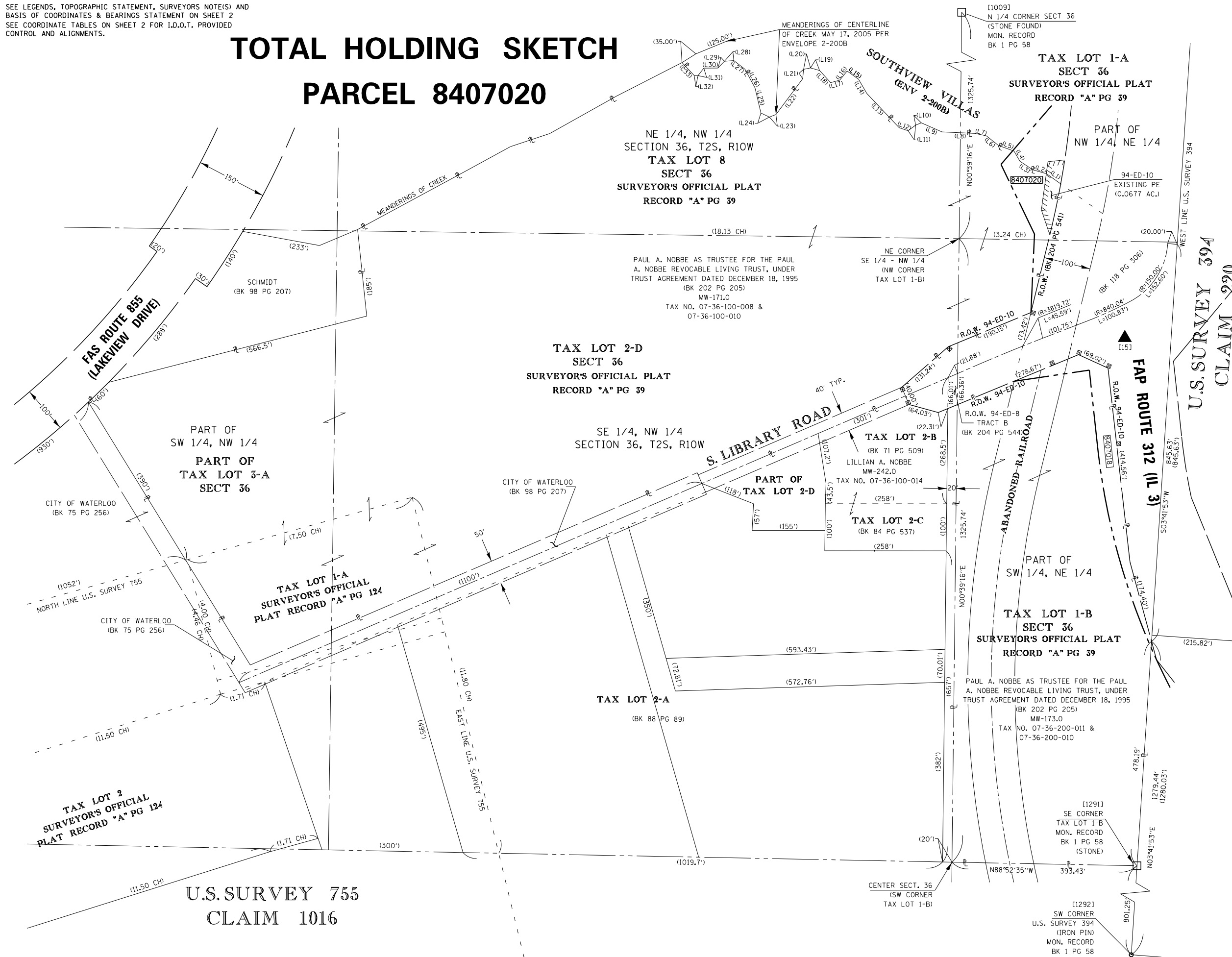


SEE LEGENDS, TOPOGRAPHIC STATEMENT, SURVEYORS NOTE(S) AND BASIS OF COORDINATES & BEARINGS STATEMENT ON SHEET 2
SEE COORDINATE TABLES ON SHEET 2 FOR I.D.O.T. PROVIDED CONTROL AND ALIGNMENTS.

TOTAL HOLDING SKETCH PARCEL 8407020



SPACE RESERVED FOR RECORDING OFFICER

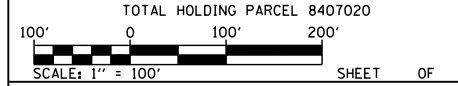


CENTERLINE OF CREEK PER FINAL PLAT SOUTHVIEW VILLAS (ENV. 2-200B)

LINE	RECORD	DISTANCE
L1		37.34'
L2		30.00'
L3		33.00'
L4		25.00'
L5		35.00'
L6		33.00'
L7		25.00'
L8		70.00'
L9		48.00'
L10		13.00'
L11		20.00'
L12		20.00'
L13		100.00'
L14		35.00'
L15		30.00'
L16		25.00'
L17		20.00'
L18		35.00'
L19		20.00'
L20		15.00'
L21		20.00'
L22		95.00'
L23		15.00'
L24		20.00'
L25		55.00'
L26		45.00'
L27		30.00'
L28		20.00'
L29		20.00'
L30		30.00'
L31		20.00'
L32		8.00'
L33		38.00'

ASSOCIATED PROFESSIONALS, INC.
17625 Mockingbird Road, P.O. Box 311
Nashville, Illinois 62263
Ph. 618-478-9000 Fax 618-478-9001
web: www.apisurvey.com
IDPR Design Firm License No. 184-001303

ILLINOIS DEPARTMENT OF TRANSPORTATION
PLAT OF HIGHWAYS
FAP ROUTE 312 (IL 3)
SECTION 68-WRS-1
MONROE COUNTY
JOB NO. R-98-007-04



ILLINOIS DEPARTMENT OF TRANSPORTATION
DIVISION OF HIGHWAYS/REGION 5/DISTRICT 8
1102 EASTPORT PLAZA DRIVE
COLLINGSVILLE, ILLINOIS 62234-6198

F.A.P. RTE.	SECTION	COUNTY	TOTAL SHEETS	SHEET NO.
312	68-WRS-1	MONROE	760	297

CONTRACT NO. 76817

COMPLETION DATE OF FIELD WORK PERFORMED
LAND SURVEY: _____ ROW STAKING: _____