

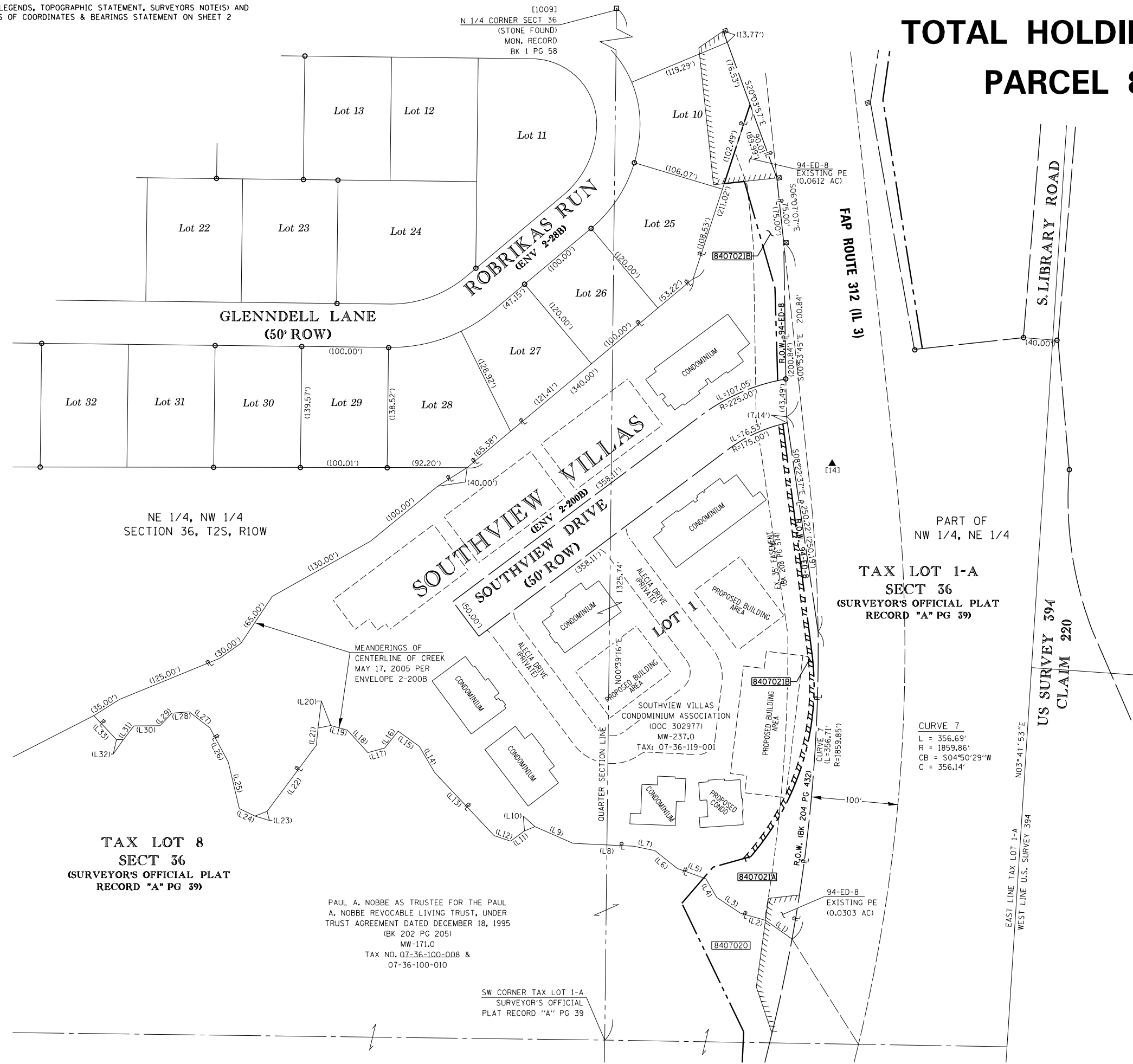
SEE LEGENDS, TOPOGRAPHIC STATEMENT, SURVEYORS NOTE(S) AND BASIS OF COORDINATES & BEARINGS STATEMENT ON SHEET 2

# TOTAL HOLDING SKETCH

## PARCEL 8407021



SPACE RESERVED FOR RECORDING OFFICER



CENTERLINE OF CREEK PER FINAL PLAT SOUTHVIEW VILLAS (ENV. 2-200B)

LINE	RECORD DISTANCE
L1	37.34'
L2	30.00'
L3	33.00'
L4	25.00'
L5	35.00'
L6	33.00'
L7	25.00'
L8	70.00'
L9	48.00'
L10	13.00'
L11	20.00'
L12	20.00'
L13	100.00'
L14	35.00'
L15	30.00'
L16	25.00'
L17	20.00'
L18	35.00'
L19	20.00'
L20	15.00'
L21	20.00'
L22	95.00'
L23	15.00'
L24	20.00'
L25	55.00'
L26	45.00'
L27	30.00'
L28	20.00'
L29	20.00'
L30	30.00'
L31	20.00'
L32	8.00'
L33	38.00'

**TAX LOT 8  
SECT 36**  
(SURVEYOR'S OFFICIAL PLAT  
RECORD "A" PG 39)

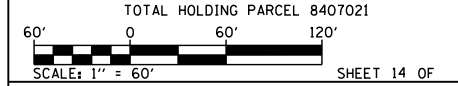
PAUL A. NOBBE AS TRUSTEE FOR THE PAUL A. NOBBE REVOCABLE LIVING TRUST, UNDER TRUST AGREEMENT DATED DECEMBER 18, 1995 (BK 202 PG 205)  
MW-171.0  
TAX NO. 07-36-100-008 & 07-36-100-010

SW CORNER TAX LOT 1-A  
SURVEYOR'S OFFICIAL  
PLAT RECORD "A" PG 39

**TAX LOT 1-A  
SECT 36**  
(SURVEYOR'S OFFICIAL PLAT  
RECORD "A" PG 39)

**ASSOCIATED PROFESSIONALS, INC.**  
17625 Mockingbird Road, P.O. Box 311  
Nashville, Illinois 62263  
Ph. 618-478-9000 Fax 618-478-9001  
web: www.apisurvey.com  
IDPR Design Firm License No. 184-001303

ILLINOIS DEPARTMENT OF TRANSPORTATION  
**PLAT OF HIGHWAYS**  
FAP ROUTE 312 (IL 3)  
SECTION 68-WRS-1  
MONROE COUNTY  
JOB NO. R-98-007-04



ILLINOIS DEPARTMENT OF TRANSPORTATION  
DIVISION OF HIGHWAYS/REGION 5/DISTRICT 8  
1102 EASTPORT PLAZA DRIVE  
COLLINSVILLE, ILLINOIS 62234-6198

F.A.P. RTE.	SECTION	COUNTY	TOTAL SHEETS	SHEET NO.
312	68-WRS-1	MONROE	760	298

CONTRACT NO. 76817

COMPLETION DATE OF FIELD WORK PERFORMED

LAND SURVEY: 9/23/2011 ROW STAKING:

FED. ROAD DIST. NO. 8 (ILLINOIS) FED. AID PROJECT