

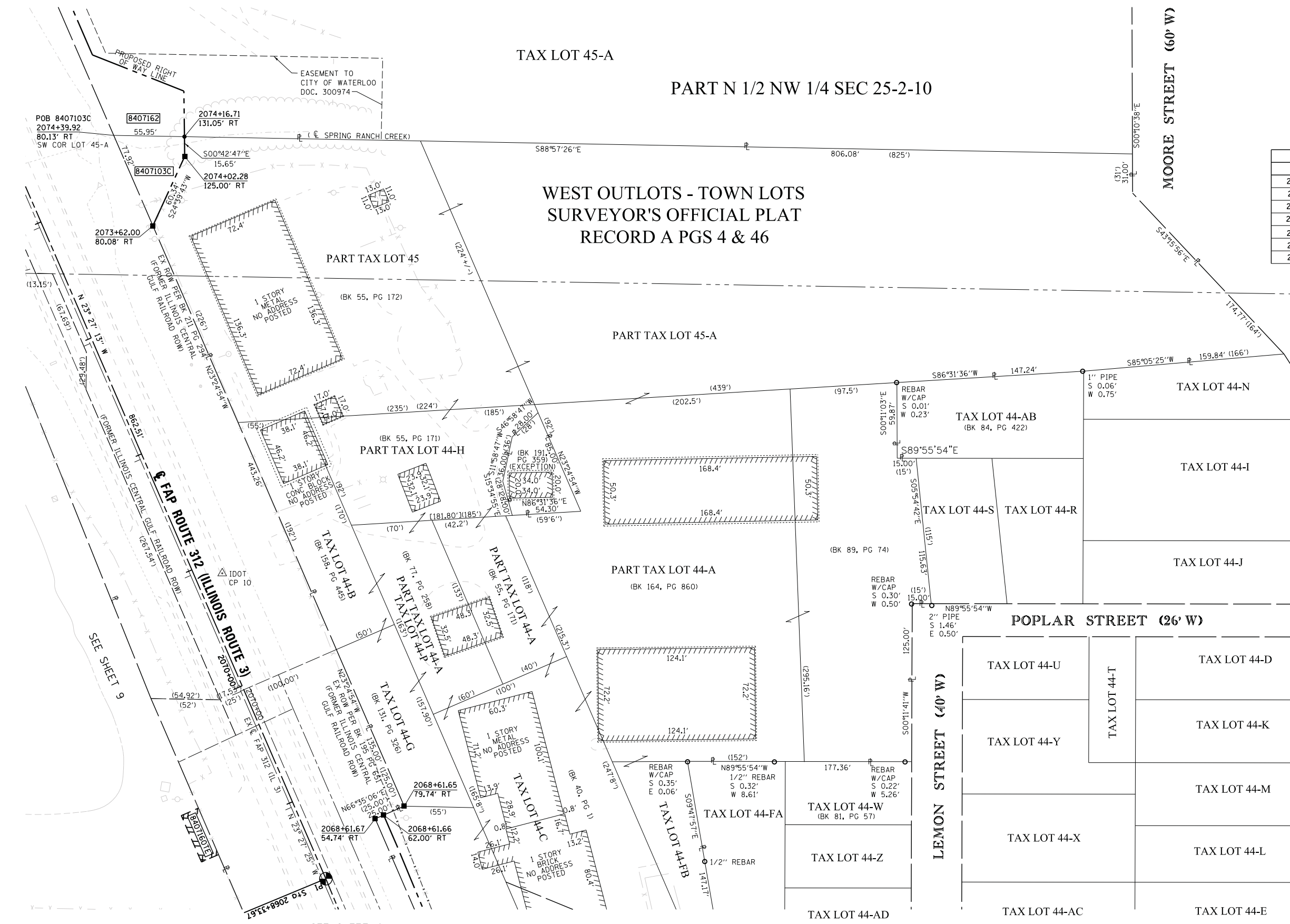
SEE SHEET 11



SPACE RESERVED FOR RECORDING OFFICER

SEE LEGENDS, TOPOGRAPHIC STATEMENT, SURVEYORS NOTE(S) AND BASIS OF COORDINATES & BEARINGS STATEMENT ON SHEET 2

COORDINATE TABLE			
STATION	OFFSET	NORTHING	EASTING
2074+39.92	80.13' RT	607959.7035	2298669.3574
2074+16.71	131.05' RT	607958.6852	2298725.3025
2074+02.28	125.00' RT	607943.0386	2298725.4972
2073+62.00	80.08' RT	607888.2045	2298700.3204
2068+61.67	54.74' RT	607419.1257	2298876.2130
2068+33.67	PI	607371.6475	2298837.1384
2068+61.65	79.74' RT	607429.0604	2298899.1542



STATE OF ILLINOIS)
) SS
 COUNTY OF MADISON)

I, GREGORY S. McVICAR, AN ILLINOIS PROFESSIONAL LAND SURVEYOR, CERTIFY THAT I HAVE SURVEYED THE PLAT OF HIGHWAY SHOWN HEREON AND THAT THIS PROFESSIONAL SERVICE CONFORMS TO THE CURRENT ILLINOIS MINIMUM STANDARDS FOR A BOUNDARY SURVEY FOR THE PROPOSED PARCEL TO BE ACQUIRED BY THE STATE OF ILLINOIS, DEPARTMENT OF TRANSPORTATION, SHOWN HEREON.

DATED _____

GREGORY S. McVICAR, PLS NO. 3512
 LICENSE EXPIRATION DATE: 11/30/2014



SHERRILL ASSOCIATES, INC.
 Engineers - Surveyors - Planners
 Professional Design Firm Number 184-001238
 316 North Main Street, Edwardsville, IL 62025
 2727 Telegraph Road, St. Louis, MO 63125

ILLINOIS DEPARTMENT OF TRANSPORTATION
PLAT OF HIGHWAYS
 FAP ROUTE 312 (IL 3)
 SECTION 68-WRS-1
 MONROE COUNTY
 JOB NO. R-98-007-04
 STATION 2069+00 TO STATION 2074+00

40' 0 40' 80' SHEET 5 OF 46
 SCALE: 1" = 40' SET 2 OF 2

F.A. RTE.	SECTION	COUNTY	TOTAL SHEETS	SHEET NO.
312	68-WRS-1	MONROE	760	305

ILLINOIS DEPARTMENT OF TRANSPORTATION
 DIVISION OF HIGHWAYS/REGION 5/DISTRICT 8
 1102 EASTPORT PLAZA DRIVE
 COLLINSVILLE, ILLINOIS 62234-6198

COMPLETION DATE OF FIELD WORK PERFORMED	
LAND SURVEY: JULY, 2011	ROW STAKING: NOVEMBER, 2012

CONTRACT NO. 76817
 FED. ROAD DIST. NO. ILLINOIS FED. AID PROJECT

PART S 1/2 NW 1/4 SEC 25-2-10
 SURVEYOR'S OFFICIAL
 RECORD C, PG 283