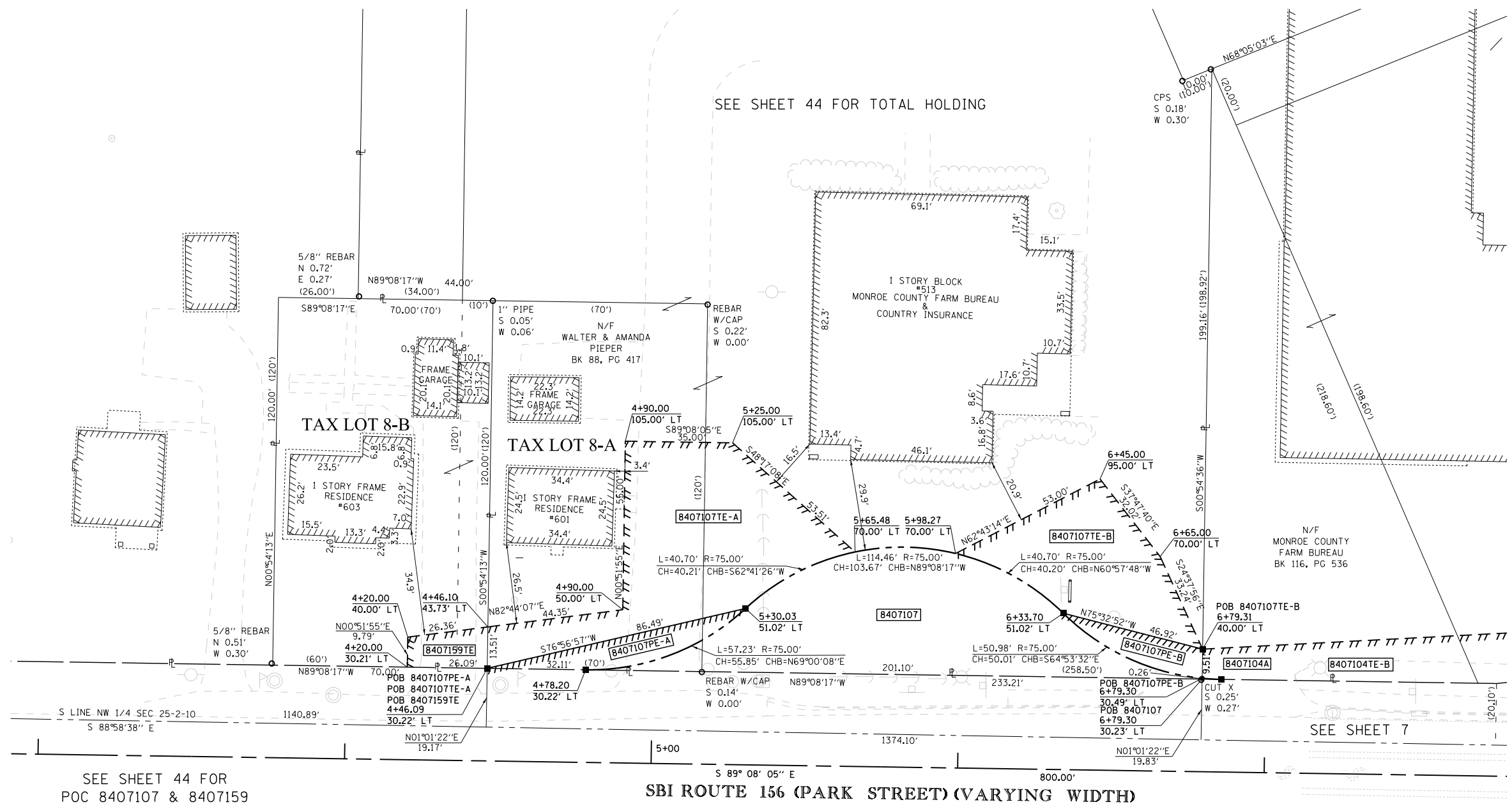


SPACE RESERVED FOR RECORDING OFFICER

SEE LEGENDS, TOPOGRAPHIC STATEMENT, SURVEYORS NOTE(S) AND BASIS OF COORDINATES & BEARINGS STATEMENT ON SHEET 2

COORDINATE TABLE			
STATION	OFFSET	NORTHING	EASTING
4+20.00	30.21' LT	606542.3988	2298631.0677
4+20.00	40.00' LT	606552.1836	2298631.2154
4+46.10	43.73' LT	606555.5170	2298657.3642
4+46.09	30.22' LT	606542.0064	2298657.1511
4+78.20	30.22' LT	606541.5232	2298689.2620
4+90.00	50.00' LT	606561.1253	2298701.3585
4+90.00	105.00' LT	606616.1191	2298702.1891
5+30.03	51.02' LT	606561.5363	2298741.4037
5+25.00	105.00' LT	606615.5905	2298737.1851
5+65.48	70.00' LT	606579.9832	2298777.1293
5+98.27	70.00' LT	606579.4881	2298809.9154
6+33.70	51.02' LT	606559.9768	2298845.0614
6+45.00	95.00' LT	606603.7795	2298857.0204
6+65.00	70.00' LT	606578.4803	2298876.6405
6+79.30	30.23' LT	606538.4981	2298890.3384
6+79.31	40.00' LT	606548.2677	2298890.4936
6+79.30	30.49' LT	606538.7580	2298890.3426



STATE OF ILLINOIS)
) SS
 COUNTY OF MADISON)

I, GREGORY S. McVICAR, AN ILLINOIS PROFESSIONAL LAND SURVEYOR, CERTIFY THAT I HAVE SURVEYED THE PLAT OF HIGHWAY SHOWN HEREON AND THAT THIS PROFESSIONAL SERVICE CONFORMS TO THE CURRENT ILLINOIS MINIMUM STANDARDS FOR A BOUNDARY SURVEY FOR THE PROPOSED PARCEL TO BE ACQUIRED BY THE STATE OF ILLINOIS, DEPARTMENT OF TRANSPORTATION, SHOWN HEREON.

DATED _____

GREGORY S. McVICAR, PLS NO. 3512
 LICENSE EXPIRATION DATE: 11/30/2014



SEE SHEET 44 FOR
 POC 8407107 & 8407159

SBI ROUTE 156 (PARK STREET) (VARYING WIDTH)

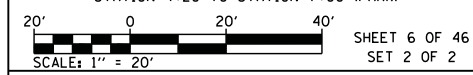
SEE SHEET 7

LAKEVIEW DRIVE

PARCEL NO.	OWNER	TOTAL HOLDING	FEE SIMPLE ACQUISITION		REMAINDER	EASEMENTS		PERMANENT TAX NUMBER	PROPERTY ACQUIRED BY
			ACRES	SO. FT.		ACRES	SO. FT.		
8407107	MONROE COUNTY FARM BUREAU, AN ILLINOIS NOT-FOR-PROFIT CORPORATION TITLE REPORT NO. MW-274.0	2.6888	0.0990	4,311	2.5898	PE-A - 0.0123 PE-B - 0.0083 TE-A - 0.0831 TE-B - 0.0459	PE-A - 536 PE-B - 361 TE-A - 3,647 TE-B - 1,999	PE - DRAINAGE CONSTRUCTION AND MAINTENANCE TE - GRADING	07-25-182-004-000; 07-25-182-003-000
8407159	DALE S. KIRKLEY AND DONNA K. KIRKLEY, HIS WIFE, IN JOINT TENANCY TITLE REPORT NO. MW-284.0	0.1928	N/A	N/A	0.1928	TE - 0.0070	TE - 304	TE - GRADING AND ENTRANCE CONSTRUCTION	07-25-182-002-000

SHERRILL ASSOCIATES, INC.
 Engineers - Surveyors - Planners
 Professional Design Firm Number 184-001238
 316 North Main Street
 Edwardsville, IL 62025
 2727 Telegraph Road
 St. Louis, MO 63125

ILLINOIS DEPARTMENT OF TRANSPORTATION
PLAT OF HIGHWAYS
 FAP ROUTE 312 (IL 3)
 SECTION 68-WRS-1
 MONROE COUNTY
 JOB NO. R-98-007-04
 STATION 4+20 TO STATION 7+00 (PARK)



ILLINOIS DEPARTMENT OF TRANSPORTATION
 DIVISION OF HIGHWAYS/REGION 5/DISTRICT 8
 1102 EASTPORT PLAZA DRIVE
 COLLINSVILLE, ILLINOIS 62234-6198

F.A. RTE.	SECTION	COUNTY	TOTAL SHEETS	SHEET NO.
312	68-WRS-1	MONROE	760	306

CONTRACT NO. 76817

COMPLETION DATE OF FIELD WORK PERFORMED
 LAND SURVEY: JULY, 2011 ROW STAKING: NOVEMBER, 2012

FED. ROAD DIST. NO. ILLINOIS FED. AID PROJECT