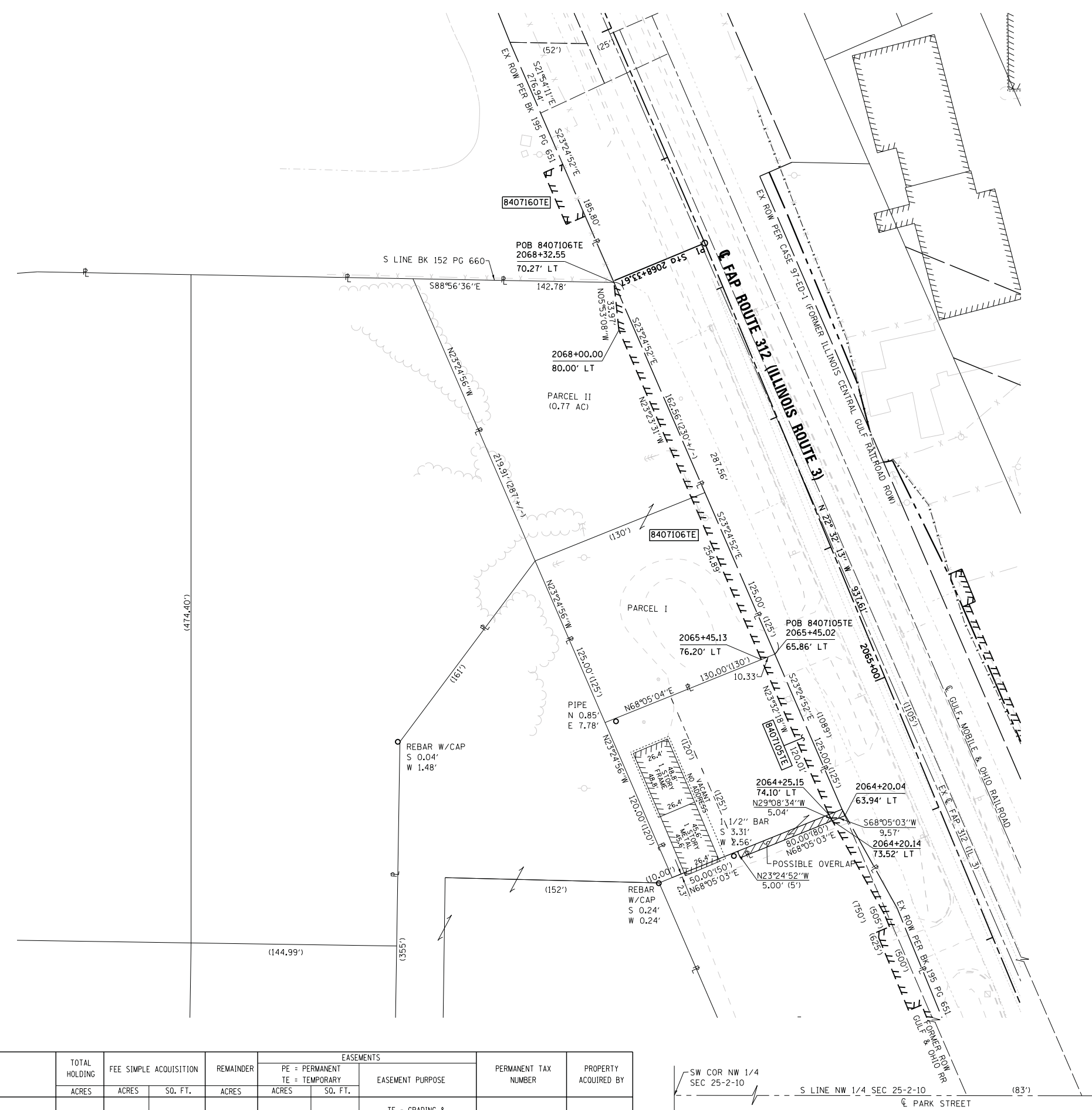




SPACE RESERVED FOR RECORDING OFFICER

SEE LEGENDS, TOPOGRAPHIC STATEMENT, SURVEYORS NOTE(S) AND BASIS OF COORDINATES & BEARINGS STATEMENT ON SHEET 2

COORDINATE TABLE			
STATION	OFFSET	NORTHING	EASTING
2064+20.04	63.94' LT	606965.1002	2298936.6155
2065+45.02	65.86' LT	607079.8045	2298886.9371
2065+45.13	76.20' LT	607075.9471	2298877.3491
2068+00.00	80.00' LT	607309.8909	2298776.1510
2068+32.55	70.27' LT	607343.6837	2298772.6628
2064+20.14	73.52' LT	606961.5251	2298927.7292
2064+25.15	74.10' LT	606965.9260	2298925.2755



STATE OF ILLINOIS)
) SS
 COUNTY OF MADISON)

I, GREGORY S. McVICAR, AN ILLINOIS PROFESSIONAL LAND SURVEYOR, CERTIFY THAT I HAVE SURVEYED THE PLAT OF HIGHWAY SHOWN HEREON AND THAT THIS PROFESSIONAL SERVICE CONFORMS TO THE CURRENT ILLINOIS MINIMUM STANDARDS FOR A BOUNDARY SURVEY FOR THE PROPOSED PARCEL TO BE ACQUIRED BY THE STATE OF ILLINOIS, DEPARTMENT OF TRANSPORTATION, SHOWN HEREON.

DATED _____

GREGORY S. McVICAR, PLS NO. 3512
 LICENSE EXPIRATION DATE: 11/30/2014



SA **SHERRILL ASSOCIATES, INC.**
 Engineers - Surveyors - Planners
 Professional Design Firm Number 184-001238
 316 North Main Street, Edwardsville, IL 62025 | 2727 Telegraph Road, St. Louis, MO 63125

ILLINOIS DEPARTMENT OF TRANSPORTATION
PLAT OF HIGHWAYS
 FAP ROUTE 312 (IL 3)
 SECTION 68-WRS-1
 MONROE COUNTY
 JOB NO. R-98-007-04
 STATION 2063+00 TO STATION 2069+00

40' 0 40' 80'
 SCALE: 1" = 40' SHEET 8 OF 46
 SET 2 OF 2

ILLINOIS DEPARTMENT OF TRANSPORTATION
 DIVISION OF HIGHWAYS/REGION 5/DISTRICT 8
 1102 EASTPORT PLAZA DRIVE
 COLLINSVILLE, ILLINOIS 62234-6198

F.A. RTE.	SECTION	COUNTY	TOTAL SHEETS	SHEET NO.
312	68-WRS-1	MONROE	760	308

COMPLETION DATE OF FIELD WORK PERFORMED
 LAND SURVEY: JULY, 2011 | ROW STAKING: NOVEMBER, 2012

CONTRACT NO. 76817
 FED. ROAD DIST. NO. | ILLINOIS FED. AID PROJECT

PARCEL NO.	OWNER	TOTAL HOLDING	FEE SIMPLE ACQUISITION			REMAINDER		EASEMENTS		PERMANENT TAX NUMBER	PROPERTY ACQUIRED BY
			ACRES	ACRES	SO. FT.	ACRES	ACRES	SO. FT.	PE = PERMANENT		
8407105	WAYNE N. MESNARICH TITLE REPORT NO. MW-185.0	0.3672	N/A	N/A	0.3672	TE - 0.0292	TE - 1,273	TE - GRADING & ENTRANCE CONSTRUCTION	07-25-182-006-000		
8407106	WAYNE DISTRIBUTING, INC., AN ILLINOIS CORPORATION TITLE REPORT NO. MW-167.0	0.9410	N/A	N/A	0.9410	TE - 0.0640	TE - 2,788	TE - GRADING & ENTRANCE CONSTRUCTION	07-25-182-005-000; 07-25-182-008-000		