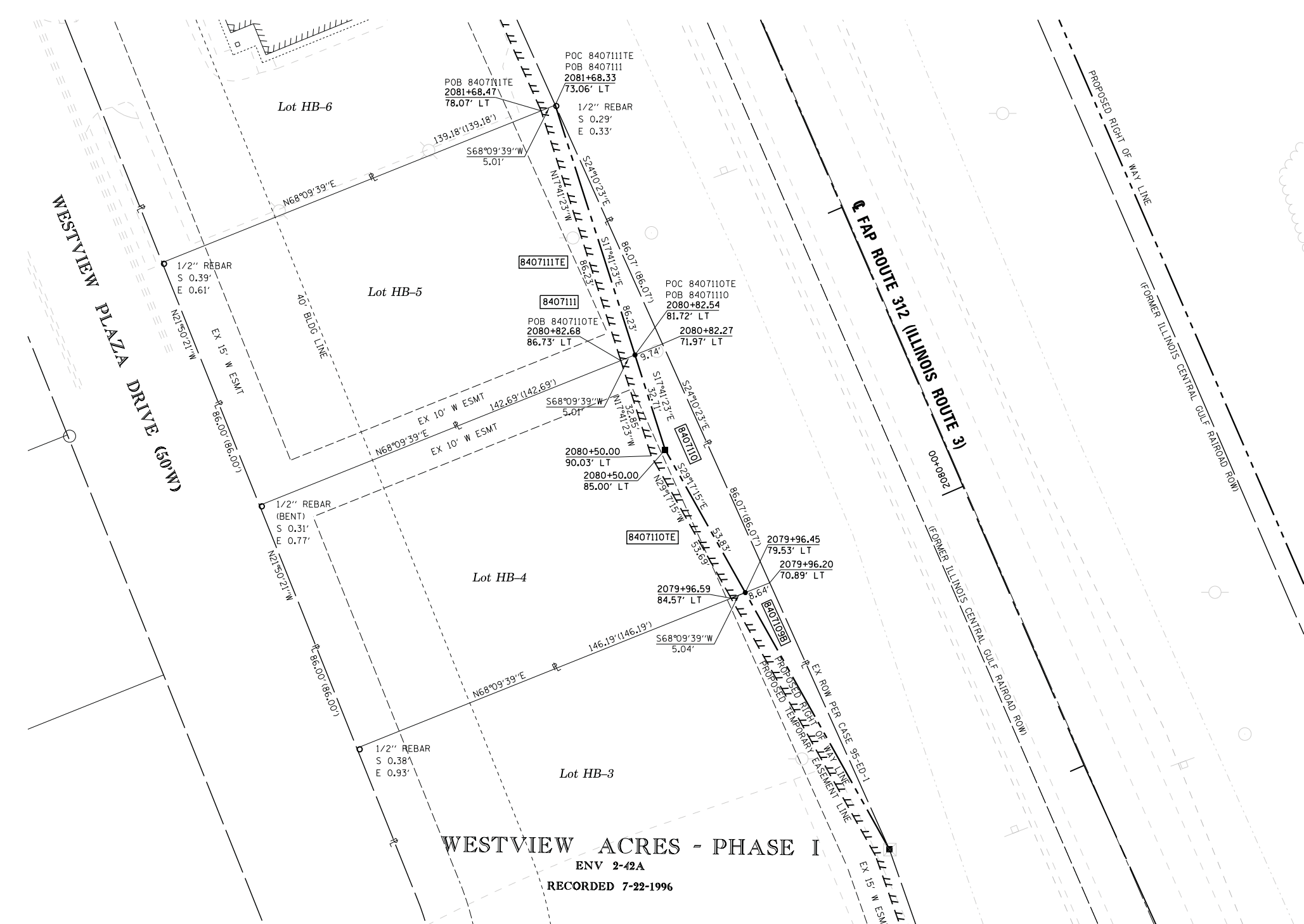




SPACE RESERVED FOR RECORDING OFFICER

SEE LEGENDS, TOPOGRAPHIC STATEMENT, SURVEYORS NOTE(S) AND BASIS OF COORDINATES & BEARINGS STATEMENT ON SHEET 2

COORDINATE TABLE			
STATION	OFFSET	NORTHING	EASTING
2079+96.59	84.57' LT	608400.1339	2298295.4737
2079+96.20	70.89' LT	608405.2230	2298308.1720
2079+96.45	79.53' LT	608402.0098	2298300.1544
2080+50.00	85.00' LT	608448.9607	2298273.8202
2080+50.00	90.03' LT	608446.9576	2298269.2109
2080+82.27	71.97' LT	608483.7470	2298272.9262
2080+82.68	86.73' LT	608478.2573	2298259.2281
2080+82.54	81.72' LT	608480.1222	2298263.8815
2081+68.33	73.06' LT	608562.2710	2298237.6804
2081+68.47	78.07' LT	608560.4062	2298233.0273



STATE OF ILLINOIS)
) SS
 COUNTY OF MADISON)

I, GREGORY S. McVICAR, AN ILLINOIS PROFESSIONAL LAND SURVEYOR, CERTIFY THAT I HAVE SURVEYED THE PLAT OF HIGHWAY SHOWN HEREON AND THAT THIS PROFESSIONAL SERVICE CONFORMS TO THE CURRENT ILLINOIS MINIMUM STANDARDS FOR A BOUNDARY SURVEY FOR THE PROPOSED PARCEL TO BE ACQUIRED BY THE STATE OF ILLINOIS, DEPARTMENT OF TRANSPORTATION, SHOWN HEREON.

DATED _____

GREGORY S. McVICAR, PLS NO. 3512
 LICENSE EXPIRATION DATE: 11/30/2014



SHERRILL ASSOCIATES, INC.
 Engineers - Surveyors - Planners
 Professional Design Firm Number 184-001238
 316 North Main Street, Edwardsville, IL 62025
 2727 Telegraph Road, St. Louis, MO 63125

ILLINOIS DEPARTMENT OF TRANSPORTATION
PLAT OF HIGHWAYS
 FAP ROUTE 312 (IL 3)
 SECTION 68-WRS-1
 MONROE COUNTY
 JOB NO. R-98-007-04
 STATION 2079+50 TO STATION 2081+68

SCALE: 1" = 20'

SHEET 12 OF 46
 SET 2 OF 2

ILLINOIS DEPARTMENT OF TRANSPORTATION
 DIVISION OF HIGHWAYS/REGION 5/DISTRICT 8
 1102 EASTPORT PLAZA DRIVE
 COLLINSVILLE, ILLINOIS 62234-6198

F.A. RTE.	SECTION	COUNTY	TOTAL SHEETS	SHEET NO.
312	68-WRS-1	MONROE	760	312

CONTRACT NO. 76817

PARCEL NO.	OWNER	TOTAL HOLDING ACRES	FEE SIMPLE ACQUISITION		REMAINDER ACRES	EASEMENTS		PERMANENT TAX NUMBER	PROPERTY ACQUIRED BY
			ACRES	SQ. FT.		PE = PERMANENT ACRES	TE = TEMPORARY SQ. FT.		
8407110	WESTVIEW ACRES, INC., AN ILLINOIS CORPORATION TITLE REPORT NO. MW-169.0	0.2852	0.0222	967	0.2630	TE - 0.0099	TE - 433	TE - GRADING	07-25-101-012-000
8407111	WESTVIEW ACRES, INC., AN ILLINOIS CORPORATION TITLE REPORT NO. MW-169.0	0.2782	0.0096	419	0.2686	TE - 0.0099	TE - 431	TE - GRADING	07-25-101-013-000

COMPLETION DATE OF FIELD WORK PERFORMED	
LAND SURVEY: JULY, 2011	ROW STAKING: NOVEMBER, 2012