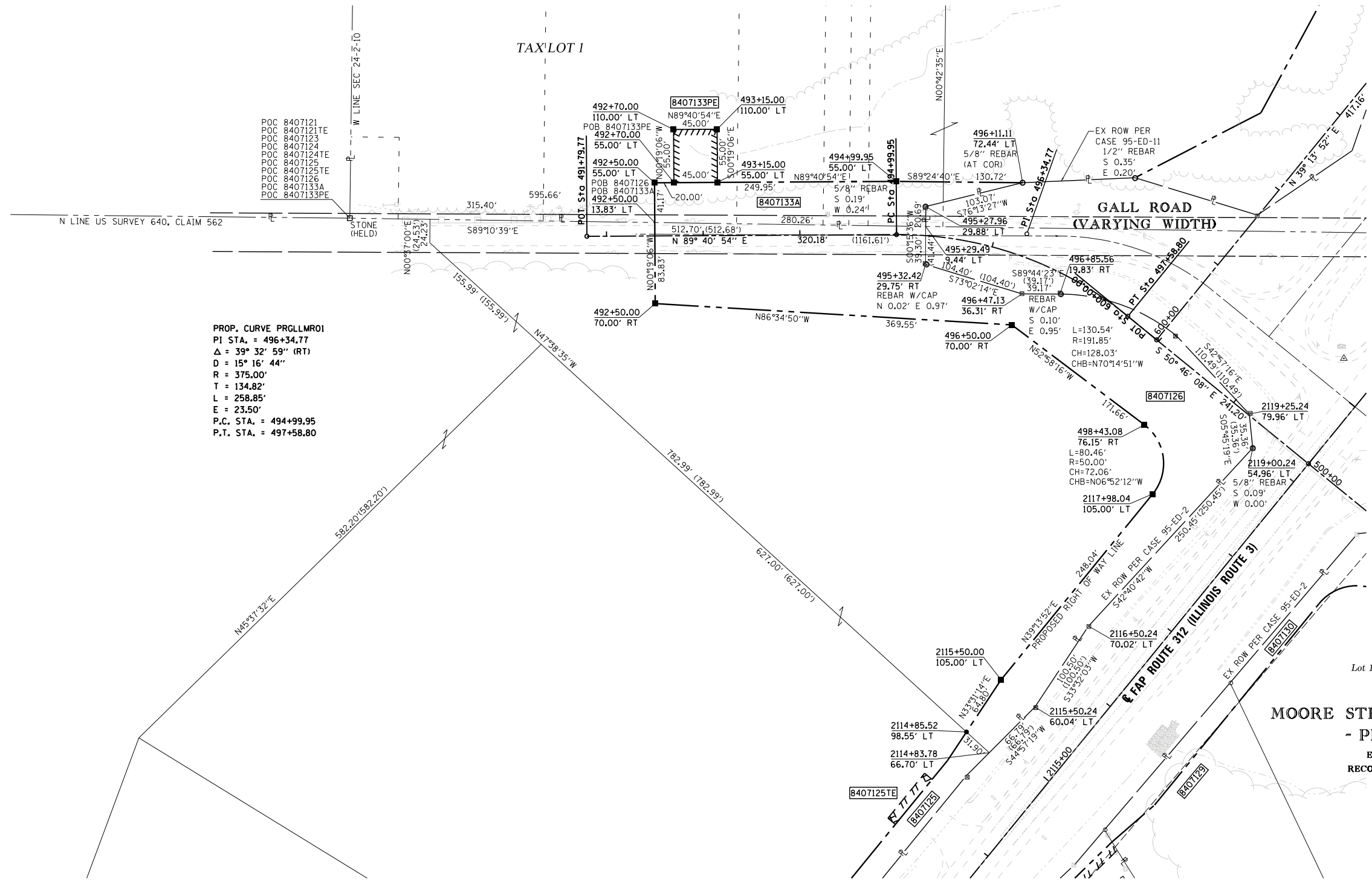


PART OF SEC 24, T 2 S, R 10 W, OF THE 3RD PM, MONROE COUNTY, ILLINOIS



SPACE RESERVED FOR RECORDING OFFICER

SEE LEGENDS, TOPOGRAPHIC STATEMENT, SURVEYORS NOTE(S) AND BASIS OF COORDINATES & BEARINGS STATEMENT ON SHEET 2



PROP. CURVE PRGLLMROI
 PI STA. = 496+34.77
 Δ = 39° 32' 59" (RT)
 R = 375.00'
 T = 134.82'
 L = 258.85'
 E = 23.50'
 P.C. STA. = 494+99.95
 P.T. STA. = 497+58.80

COORDINATE TABLE			
STATION	OFFSET	NORTHING	EASTING
491+79.77	POT	612233.8773	2297813.4381
494+99.95	PC	612235.6569	2298133.6648
496+34.77	PI	612236.4059	2298268.4376
497+58.80	PT	612151.1374	2298372.8708
500+00	POT	611998.5930	2298559.7008
492+50.00	13.83' LT	612248.0994	2297883.5918
492+50.00	55.00' LT	612289.2668	2297883.3630
492+70.00	55.00' LT	612289.3779	2297903.3627
492+70.00	110.00' LT	612344.3771	2297903.0570
493+15.00	55.00' LT	612289.6280	2297948.3620
493+15.00	110.00' LT	612344.6271	2297948.0563
494+99.95	55.00' LT	612290.6558	2298133.3119
495+32.42	29.75' RT	612204.7770	2298163.6441
495+29.49	9.44' LT	612244.0760	2298163.8225
495+27.96	29.88' LT	612264.7673	2298163.9165
496+11.11	72.44' LT	612289.3123	2298264.0224
492+50.00	70.00' RT	612164.2687	2297884.0576
495+32.42	29.75' RT	612204.7770	2298163.6441
496+50.00	70.00' RT	612142.2270	2298252.9466
496+47.13	36.31' RT	612174.3197	2298263.4980
496+85.56	19.83' RT	612174.1417	2298302.6676
498+43.08	76.15' RT	612038.8513	2298389.9872
2114+83.78	66.70' LT	611699.6671	2298229.5191
2114+85.52	98.55' LT	611721.1577	2298205.9483
2115+50.00	105.00' LT	611775.1802	2298241.7330
2115+50.24	60.04' LT	611746.9291	2298276.7074
2116+50.24	70.02' LT	611830.7006	2298332.2263
2117+98.04	105.00' LT	611967.3121	2298398.6064
2119+00.24	54.96' LT	612014.8238	2298502.0016
2119+25.24	79.96' LT	612050.0056	2298498.4557

MOORE STREET STATION
 - PHASE I
 ENV 2-242A
 RECORDED 8-16-2007

STATE OF ILLINOIS)
) SS
 COUNTY OF MADISON)

I, GREGORY S. McVICAR, AN ILLINOIS PROFESSIONAL LAND SURVEYOR, CERTIFY THAT I HAVE SURVEYED THE PLAT OF HIGHWAY SHOWN HEREON AND THAT THIS PROFESSIONAL SERVICE CONFORMS TO THE CURRENT ILLINOIS MINIMUM STANDARDS FOR A BOUNDARY SURVEY FOR THE PROPOSED PARCEL TO BE ACQUIRED BY THE STATE OF ILLINOIS, DEPARTMENT OF TRANSPORTATION, SHOWN HEREON.

DATED _____

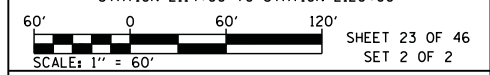
GREGORY S. McVICAR, PLS NO. 3512
 LICENSE EXPIRATION DATE: 11/30/2014



PARCEL NO.	OWNER	TOTAL HOLDING ACRES	FEE SIMPLE ACQUISITION						REMAINDER ACRES	EASEMENTS		PERMANENT TAX NUMBER	PROPERTY ACQUIRED BY
			GROSS ACRES	SO. FT.	PREVIOUSLY DEDICATED ACRES	SO. FT.	NET ACRES	SO. FT.		PE = PERMANENT ACRES	SO. FT.		
8407126	ELIZABETH DEBONIS AND KATHERIN DEBONIS, IN EQUAL SHARES AS TENANTS IN COMMON, BOTH SINGLES PERSONS TITLE REPORT NO. MW-157.0	5.4655	1.5290	66.605	0.1972	8.592	1.3318	58.013	3.9365	N/A	N/A	N/A	07-24-100-015-000
8407133	MARY H. SCHMIDT AS TRUSTEE OF THE CARSWOLD LAND TRUST, AN ILLINOIS LAND TRUST, DATED JANUARY 17, 2011 TITLE REPORT NO. MW-15.0 & MW-293.0	45.6482	A - 0.3122 B - 1.0459	A - 13,599 B - 45,558	A - 0.0600 B - 0.0588	A - 2,613 B - 2,563	A - 0.2522 B - 0.9871	A - 10,986 B - 42,995	44.2901	PE - 0.0568	PE - 2.475	DRAINAGE CONSTRUCTION AND MAINTENANCE	07-24-100-010-000; 07-24-100-001-000; 07-24-100-005-000

SHERRILL ASSOCIATES, INC.
 Engineers - Surveyors - Planners
 Professional Design Firm Number 184-001238
 316 North Main Street, Edwardsville, IL 62025
 2727 Telegraph Road, St. Louis, MO 63125

ILLINOIS DEPARTMENT OF TRANSPORTATION
 PLAT OF HIGHWAYS
 FAP ROUTE 312 (IL 3)
 SECTION 68-WRS-1
 MONROE COUNTY
 JOB NO. R-98-007-04
 STATION 2114+00 TO STATION 2120+00



ILLINOIS DEPARTMENT OF TRANSPORTATION
 DIVISION OF HIGHWAYS/REGION 5/DISTRICT 8
 1102 EASTPORT PLAZA DRIVE
 COLLINSVILLE, ILLINOIS 62234-6198

F.A. RTE.	SECTION	COUNTY	TOTAL SHEETS	SHEET NO.
312	68-WRS-1	MONROE	760	323

CONTRACT NO. 76817

COMPLETION DATE OF FIELD WORK PERFORMED
 LAND SURVEY: JULY, 2011 ROW STAKING: NOVEMBER, 2012