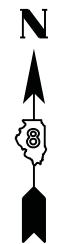
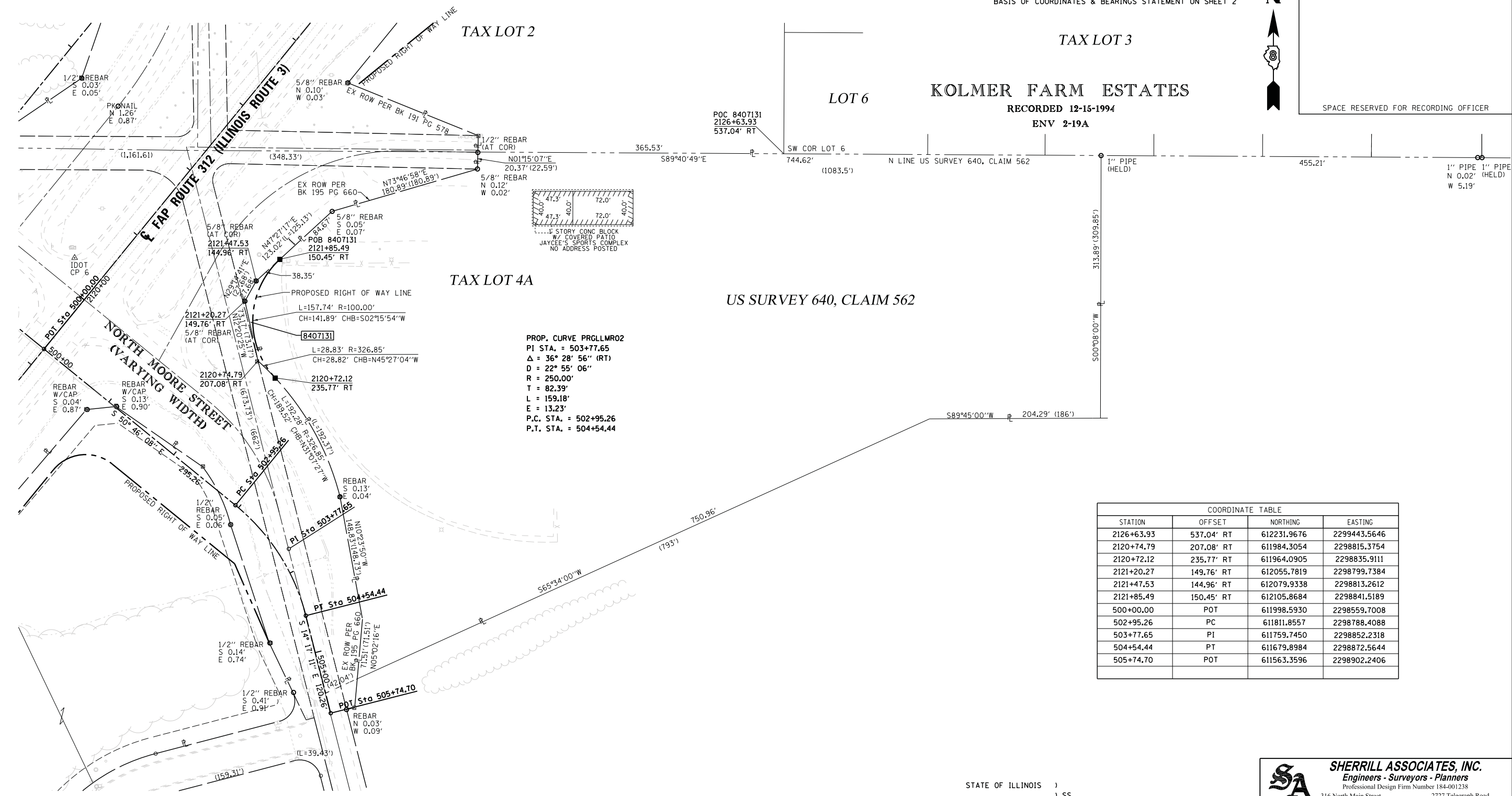


SEE LEGENDS, TOPOGRAPHIC STATEMENT, SURVEYORS NOTE(S) AND BASIS OF COORDINATES & BEARINGS STATEMENT ON SHEET 2



SPACE RESERVED FOR RECORDING OFFICER



**PROP. CURVE PRGLLMR02**  
 PI STA. = 503+77.65  
 Δ = 36° 28' 56" (RT)  
 D = 22° 55' 06"  
 R = 250.00'  
 T = 82.39'  
 L = 159.18'  
 E = 13.23'  
 P.C. STA. = 502+95.26  
 P.T. STA. = 504+54.44

COORDINATE TABLE			
STATION	OFFSET	NORTHING	EASTING
2126+63.93	537.04' RT	612231.9676	2299443.5646
2120+74.79	207.08' RT	611984.3054	2298815.3754
2120+72.12	235.77' RT	611964.0905	2298835.9111
2121+20.27	149.76' RT	612055.7819	2298799.7384
2121+47.53	144.96' RT	612079.9338	2298813.2612
2121+85.49	150.45' RT	612105.8684	2298841.5189
500+00.00	POT	611998.5930	2298559.7008
502+95.26	PC	611811.8557	2298788.4088
503+77.65	PI	611759.7450	2298852.2318
504+54.44	PT	611679.8984	2298872.5644
505+74.70	POT	611563.3596	2298902.2406

STATE OF ILLINOIS )  
 ) SS  
 COUNTY OF MADISON )

I, GREGORY S. McVICAR, AN ILLINOIS PROFESSIONAL LAND SURVEYOR, CERTIFY THAT I HAVE SURVEYED THE PLAT OF HIGHWAY SHOWN HEREON AND THAT THIS PROFESSIONAL SERVICE CONFORMS TO THE CURRENT ILLINOIS MINIMUM STANDARDS FOR A BOUNDARY SURVEY FOR THE PROPOSED PARCEL TO BE ACQUIRED BY THE STATE OF ILLINOIS, DEPARTMENT OF TRANSPORTATION, SHOWN HEREON.

DATED \_\_\_\_\_

GREGORY S. McVICAR, PLS NO. 3512  
 LICENSE EXPIRATION DATE: 11/30/2014



PARCEL NO.	OWNER	TOTAL HOLDING ACRES	FEE SIMPLE ACQUISITION			REMAINDER ACRES	EASEMENTS		PERMANENT TAX NUMBER	PROPERTY ACQUIRED BY
			ACRES	SO. FT.	ACRES		PE = PERMANENT TE = TEMPORARY	EASEMENT PURPOSE		
8407131	WATERLOO SPORTS ASSOCIATION, AN ILLINOIS CORPORATION TITLE REPORT NO. MW-155.0	9.4303	0.0154	670	9.4149	N/A	N/A	N/A	07-24-100-008-000	

**SHERRILL ASSOCIATES, INC.**  
 Engineers - Surveyors - Planners  
 Professional Design Firm Number 184-001238  
 316 North Main Street, Edwarsville, IL 62025  
 2727 Telegraph Road, St. Louis, MO 63125

ILLINOIS DEPARTMENT OF TRANSPORTATION  
**PLAT OF HIGHWAYS**  
 FAP ROUTE 312 (IL 3)  
 SECTION 68-WRS-1  
 MONROE COUNTY  
 JOB NO. R-98-007-04  
 STATION 2120+00 TO STATION 2124+00

60' 0 60' 120' SHEET 26 OF 46  
 SCALE: 1" = 60' SET 2 OF 2

ILLINOIS DEPARTMENT OF TRANSPORTATION  
 DIVISION OF HIGHWAYS/REGION 5/DISTRICT 8  
 1102 EASTPORT PLAZA DRIVE  
 COLLINSVILLE, ILLINOIS 62234-6198

F.A. RTE.	SECTION	COUNTY	TOTAL SHEETS	SHEET NO.
312	68-WRS-1	MONROE	760	326

CONTRACT NO. 76817

COMPLETION DATE OF FIELD WORK PERFORMED	
LAND SURVEY: JULY, 2011	ROW STAKING: NOVEMBER, 2012

FED. ROAD DIST. NO. ILLINOIS FED. AID PROJECT