

NORTHWEST QUADRANT - "D"		
POINT	NORTHING	EASTING
D1	602,367.35	2,300,352.00
D2	602,371.07	2,300,361.28
D3	602,375.03	2,300,370.46
D4	602,379.21	2,300,379.55
D5	602,383.62	2,300,388.52
D6	602,388.25	2,300,397.39
D7	602,393.10	2,300,406.13
D8	602,398.17	2,300,414.75
D9	602,403.45	2,300,423.24
D10	602,408.94	2,300,431.60
D11	602,414.96	2,300,440.26
D12	602,421.55	2,300,447.76
D13	602,429.49	2,300,453.81
D14	602,438.48	2,300,458.16
D15	602,448.15	2,300,460.63
D16	602,460.99	2,300,460.91

SHARED USE PATH CONNECTION - "H"		
POINT	NORTHING	EASTING
H1	602,418.51	2,300,431.42
H2	602,429.47	2,300,427.18
H3	602,442.52	2,300,417.38
H4	602,447.15	2,300,411.30
H5	602,455.10	2,300,417.36
H6	602,437.71	2,300,430.43
H7	602,422.10	2,300,436.46

NORTHEAST QUADRANT - "A"		
POINT	NORTHING	EASTING
A1	602,573.37	2,300,509.16
A2	602,563.46	2,300,510.48
A3	602,553.63	2,300,512.29
A4	602,543.90	2,300,514.59
A5	602,534.29	2,300,517.38
A6	602,524.84	2,300,520.64
A7	602,515.56	2,300,524.37
A8	602,506.48	2,300,528.55
A9	602,497.15	2,300,533.46
A10	602,488.97	2,300,539.17
A11	602,482.08	2,300,546.40
A12	602,476.77	2,300,554.86
A13	602,473.25	2,300,564.20
A14	602,471.65	2,300,574.05
A15	602,472.04	2,300,584.03
A16	602,476.62	2,300,599.01

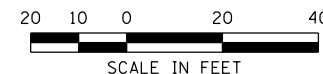
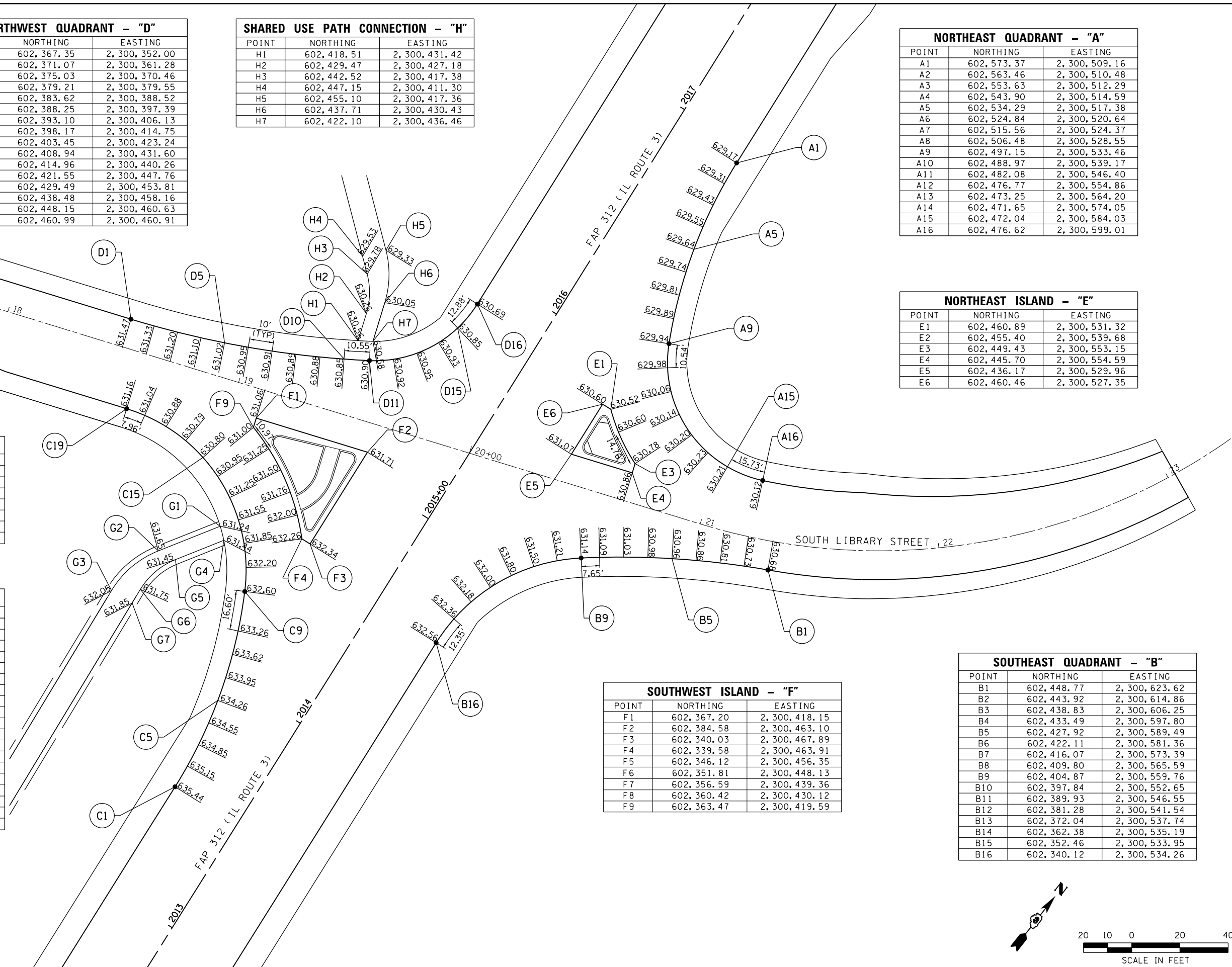
NORTHEAST ISLAND - "E"		
POINT	NORTHING	EASTING
E1	602,460.89	2,300,531.32
E2	602,455.40	2,300,539.68
E3	602,449.43	2,300,553.15
E4	602,445.70	2,300,554.59
E5	602,436.17	2,300,529.96
E6	602,460.46	2,300,527.35

SHARED USE PATH CONNECTION - "G"		
POINT	NORTHING	EASTING
G1	602,322.77	2,300,434.09
G2	602,298.90	2,300,420.27
G3	602,273.96	2,300,415.18
G4	602,319.08	2,300,438.89
G5	602,300.47	2,300,428.11
G6	602,281.77	2,300,424.30
G7	602,275.19	2,300,425.11

SOUTHWEST QUADRANT - "C"		
POINT	NORTHING	EASTING
C1	602,226.33	2,300,486.16
C2	602,236.24	2,300,484.84
C3	602,246.08	2,300,483.03
C4	602,255.81	2,300,480.73
C5	602,265.41	2,300,477.94
C6	602,274.86	2,300,474.68
C7	602,284.14	2,300,470.95
C8	602,293.22	2,300,466.77
C9	602,307.80	2,300,458.82
C10	602,315.98	2,300,453.09
C11	602,323.26	2,300,446.24
C12	602,329.49	2,300,438.43
C13	602,334.55	2,300,429.81
C14	602,338.32	2,300,420.56
C15	602,340.75	2,300,410.87
C16	602,341.76	2,300,400.93
C17	602,341.36	2,300,390.95
C18	602,339.53	2,300,381.13
C19	602,337.09	2,300,373.55

SOUTHWEST ISLAND - "F"		
POINT	NORTHING	EASTING
F1	602,367.20	2,300,418.15
F2	602,384.58	2,300,463.10
F3	602,340.03	2,300,467.89
F4	602,339.58	2,300,463.91
F5	602,346.12	2,300,456.35
F6	602,351.81	2,300,448.13
F7	602,356.59	2,300,439.36
F8	602,360.42	2,300,430.12
F9	602,363.47	2,300,419.59

SOUTHEAST QUADRANT - "B"		
POINT	NORTHING	EASTING
B1	602,448.77	2,300,623.62
B2	602,443.92	2,300,614.86
B3	602,438.83	2,300,606.25
B4	602,433.49	2,300,597.80
B5	602,427.92	2,300,589.49
B6	602,422.11	2,300,581.36
B7	602,416.07	2,300,573.39
B8	602,409.80	2,300,565.59
B9	602,404.87	2,300,559.76
B10	602,397.84	2,300,552.65
B11	602,389.93	2,300,546.55
B12	602,381.28	2,300,541.54
B13	602,372.04	2,300,537.74
B14	602,362.38	2,300,535.19
B15	602,352.46	2,300,533.95
B16	602,340.12	2,300,534.26



LAST SAVED = 1/23/2013  
 PEN TABLE = V8-244-441  
 PLOT DRIVER = pdfplotlayersbwin.ctb

FILE NAME = I:\1001100\Phase II - 76817\Cad\T\Plans\075_0876817-sht-intersec-01A.dgn	USER NAME = beriechmann	DESIGNED -	REVISED -	<b>STATE OF ILLINOIS</b> <b>DEPARTMENT OF TRANSPORTATION</b>		<b>INTERSECTION DETAILS</b> IL ROUTE 3 & SOUTH LIBRARY STREET		F.A.P. RTE. = 312	SECTION = 68-WRS-1	COUNTY = MONROE	TOTAL SHEETS = 760	SHEET NO. = 348	
PLOT SCALE = 40.0000' / in.	CHECKED -	REVISED -	REVISED -			SCALE: 1" = 20'	SHEET NO. 2 OF 2 SHEETS	STA. TO STA.	CONTRACT NO. 76817				
PLOT DATE = 1/25/2013 3:33:05 PM	DATE -	REVISED -	REVISED -			ILLINOIS FED. AID PROJECT							