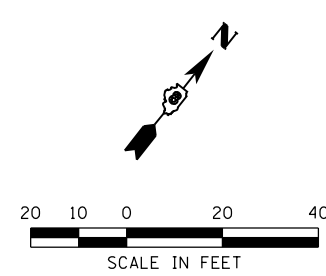
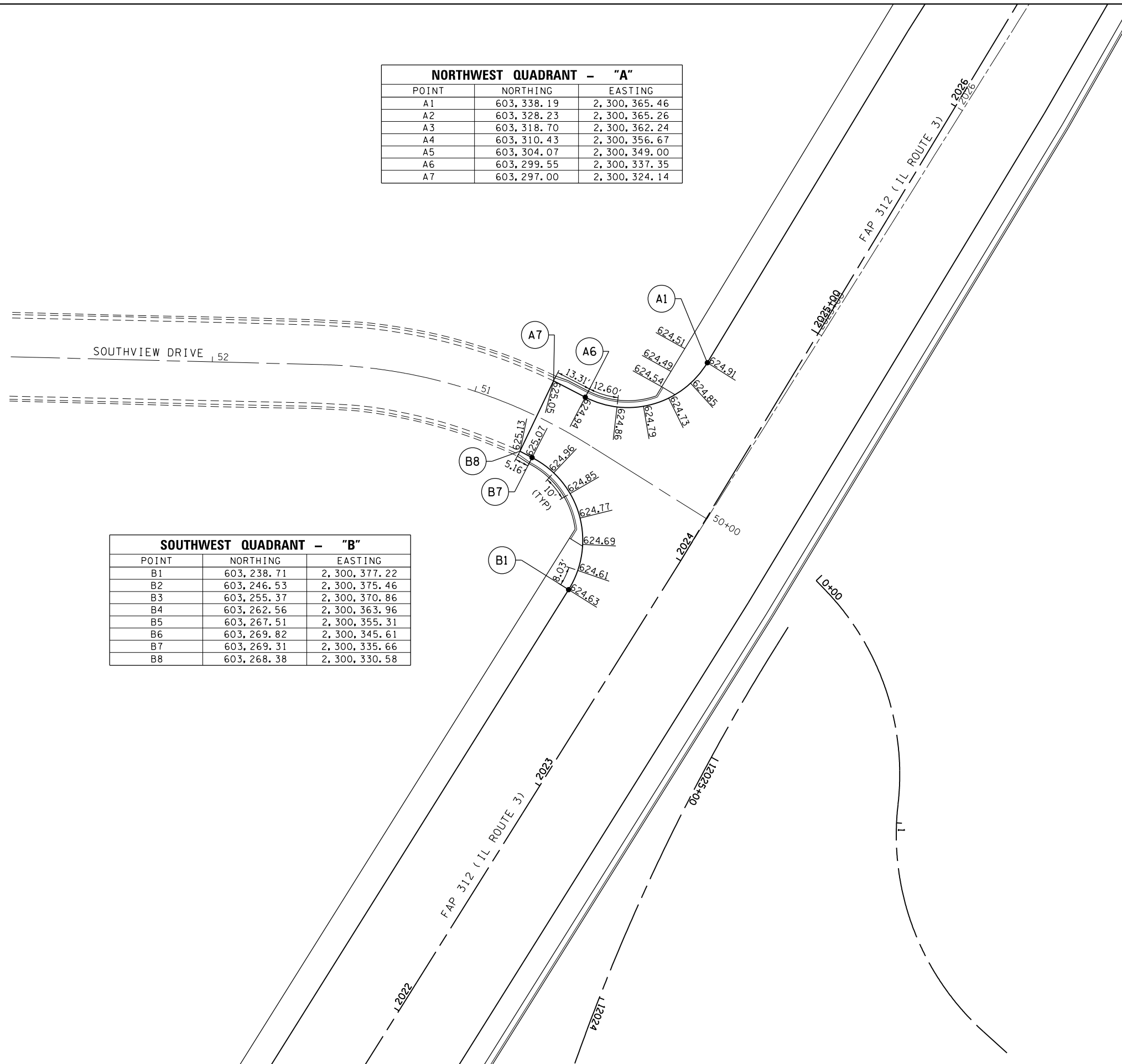


NORTHWEST QUADRANT - "A"		
POINT	NORTHING	EASTING
A1	603, 338.19	2, 300, 365.46
A2	603, 328.23	2, 300, 365.26
A3	603, 318.70	2, 300, 362.24
A4	603, 310.43	2, 300, 356.67
A5	603, 304.07	2, 300, 349.00
A6	603, 299.55	2, 300, 337.35
A7	603, 297.00	2, 300, 324.14

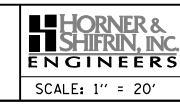
SOUTHWEST QUADRANT - "B"		
POINT	NORTHING	EASTING
B1	603, 238.71	2, 300, 377.22
B2	603, 246.53	2, 300, 375.46
B3	603, 255.37	2, 300, 370.86
B4	603, 262.56	2, 300, 363.96
B5	603, 267.51	2, 300, 355.31
B6	603, 269.82	2, 300, 345.61
B7	603, 269.31	2, 300, 335.66
B8	603, 268.38	2, 300, 330.58



LAST SAVED = 1/23/2013  
 PEN TABLE = V8-244-141  
 PLOT DRIVER = pdfnclayershpwplctcf9

FILE NAME =	USER NAME = beriechmann	DESIGNED -	REVISED -
I:\1001100\Phase II - 76817\Cad\T\Plans\076_0876817-sht-intersec-02A.dgn		DRAWN -	REVISED -
PLOT SCALE = 40.0000' / in.		CHECKED -	REVISED -
PLOT DATE = 1/25/2013 3:33:08 PM		DATE -	REVISED -

**STATE OF ILLINOIS**  
**DEPARTMENT OF TRANSPORTATION**



**INTERSECTION DETAILS**  
 IL ROUTE 3 & SOUTHVIEW DRIVE

SCALE: 1" = 20'    SHEET NO. 2 OF 2 SHEETS    STA.    TO STA.

F.A.P. RTE.	SECTION	COUNTY	TOTAL SHEETS	SHEET NO.
312	68-WRS-1	MONROE	760	350
CONTRACT NO. 76817				
ILLINOIS FED. AID PROJECT				