

NORTHWEST QUADRANT - "A"		
POINT	NORTHING	EASTING
A1	608, 871.03	2, 298, 150.66
A2	608, 861.57	2, 298, 153.86
A3	608, 851.71	2, 298, 155.44
A4	608, 841.72	2, 298, 155.37
A5	608, 831.88	2, 298, 153.64
A6	608, 822.47	2, 298, 150.30
A7	608, 813.74	2, 298, 145.45
A8	608, 805.93	2, 298, 139.22
A9	608, 799.27	2, 298, 131.77
A10	608, 793.93	2, 298, 123.33
A11	608, 790.92	2, 298, 116.54
A12	608, 787.62	2, 298, 107.10
A13	608, 784.70	2, 298, 097.54
A14	608, 782.16	2, 298, 087.87
A15	608, 780.02	2, 298, 078.10
A16	608, 778.26	2, 298, 068.26
A17	608, 776.40	2, 298, 053.60

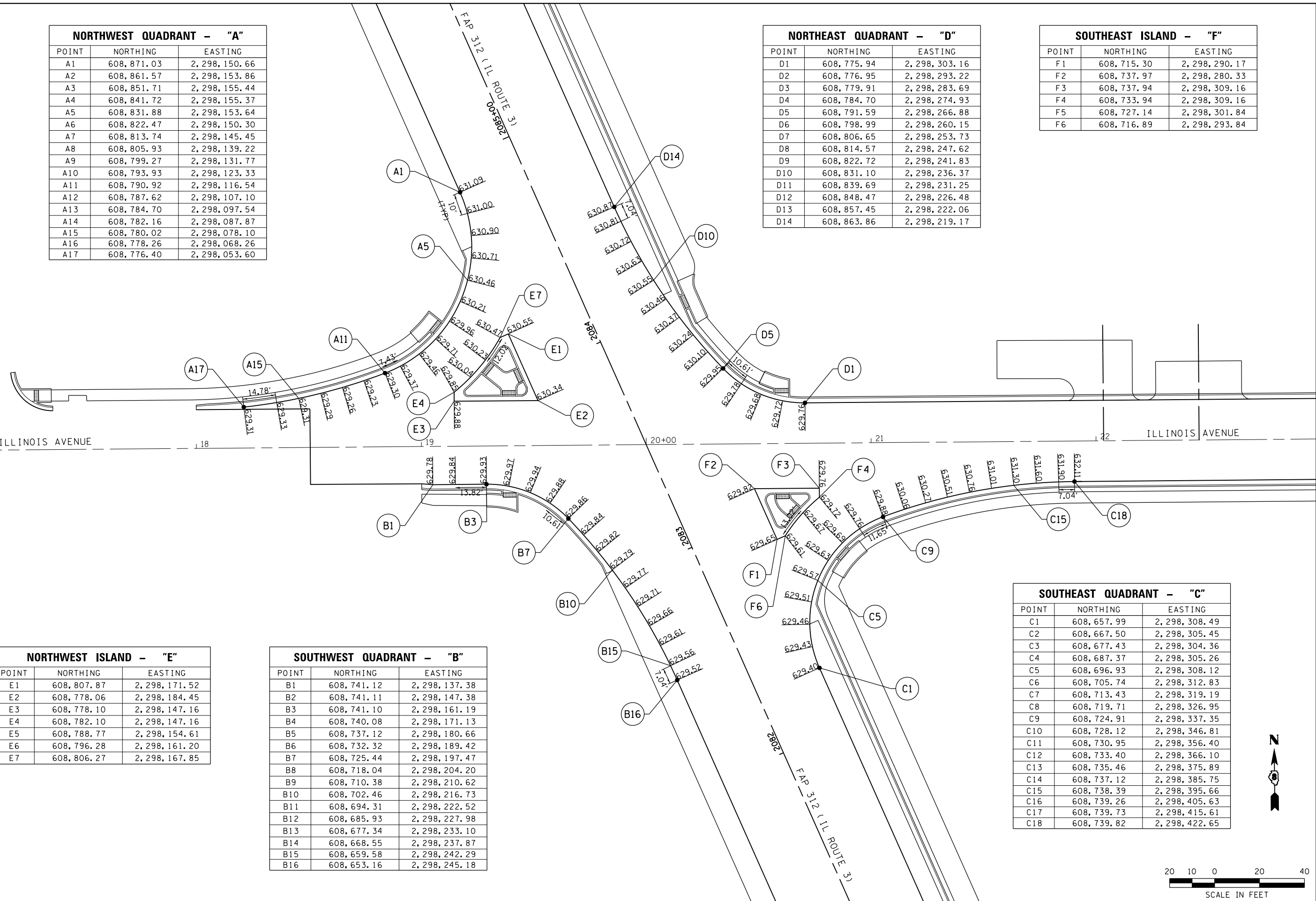
NORTHEAST QUADRANT - "D"		
POINT	NORTHING	EASTING
D1	608, 775.94	2, 298, 303.16
D2	608, 776.95	2, 298, 293.22
D3	608, 779.91	2, 298, 283.69
D4	608, 784.70	2, 298, 274.93
D5	608, 791.59	2, 298, 266.88
D6	608, 798.99	2, 298, 260.15
D7	608, 806.65	2, 298, 253.73
D8	608, 814.57	2, 298, 247.62
D9	608, 822.72	2, 298, 241.83
D10	608, 831.10	2, 298, 236.37
D11	608, 839.69	2, 298, 231.25
D12	608, 848.47	2, 298, 226.48
D13	608, 857.45	2, 298, 222.06
D14	608, 863.86	2, 298, 219.17

SOUTHEAST ISLAND - "F"		
POINT	NORTHING	EASTING
F1	608, 715.30	2, 298, 290.17
F2	608, 737.97	2, 298, 280.33
F3	608, 737.94	2, 298, 309.16
F4	608, 733.94	2, 298, 309.16
F5	608, 727.14	2, 298, 301.84
F6	608, 716.89	2, 298, 293.84

NORTHWEST ISLAND - "E"		
POINT	NORTHING	EASTING
E1	608, 807.87	2, 298, 171.52
E2	608, 778.06	2, 298, 184.45
E3	608, 778.10	2, 298, 147.16
E4	608, 782.10	2, 298, 147.16
E5	608, 788.77	2, 298, 154.61
E6	608, 796.28	2, 298, 161.20
E7	608, 806.27	2, 298, 167.85

SOUTHWEST QUADRANT - "B"		
POINT	NORTHING	EASTING
B1	608, 741.12	2, 298, 137.38
B2	608, 741.11	2, 298, 147.38
B3	608, 741.10	2, 298, 161.19
B4	608, 740.08	2, 298, 171.13
B5	608, 737.12	2, 298, 180.66
B6	608, 732.32	2, 298, 189.42
B7	608, 725.44	2, 298, 197.47
B8	608, 718.04	2, 298, 204.20
B9	608, 710.38	2, 298, 210.62
B10	608, 702.46	2, 298, 216.73
B11	608, 694.31	2, 298, 222.52
B12	608, 685.93	2, 298, 227.98
B13	608, 677.34	2, 298, 233.10
B14	608, 668.55	2, 298, 237.87
B15	608, 659.58	2, 298, 242.29
B16	608, 653.16	2, 298, 245.18

SOUTHEAST QUADRANT - "C"		
POINT	NORTHING	EASTING
C1	608, 657.99	2, 298, 308.49
C2	608, 667.50	2, 298, 305.45
C3	608, 677.43	2, 298, 304.36
C4	608, 687.37	2, 298, 305.26
C5	608, 696.93	2, 298, 308.12
C6	608, 705.74	2, 298, 312.83
C7	608, 713.43	2, 298, 319.19
C8	608, 719.71	2, 298, 326.95
C9	608, 724.91	2, 298, 337.35
C10	608, 728.12	2, 298, 346.81
C11	608, 730.95	2, 298, 356.40
C12	608, 733.40	2, 298, 366.10
C13	608, 735.46	2, 298, 375.89
C14	608, 737.12	2, 298, 385.75
C15	608, 738.39	2, 298, 395.66
C16	608, 739.26	2, 298, 405.63
C17	608, 739.73	2, 298, 415.61
C18	608, 739.82	2, 298, 422.65



LAST SAVED = 1/23/2013
 PEN TABLE = V0-244-441
 PLOT DRIVER = pdfplotlayers.batcf9

FILE NAME =	USER NAME = beriechmann	DESIGNED -	REVISED -
I:\1001100\Phase II - 76817\Cad\T\Plans\080_0876817-sht-intersec-05A.dgn		DRAWN -	REVISED -
		CHECKED -	REVISED -
PLOT SCALE = 40.0000' / in.		DATE -	REVISED -
PLOT DATE = 1/25/2013 3:33:17 PM			

STATE OF ILLINOIS
DEPARTMENT OF TRANSPORTATION



INTERSECTION DETAILS
 IL ROUTE 3 & ILLINOIS AVENUE

F.A.P. RTE. = 312	SECTION = 68-WRS-1	COUNTY = MONROE	TOTAL SHEETS = 760	SHEET NO. = 357
CONTRACT NO. 76817				
ILLINOIS FED. AID PROJECT				

SCALE: 1" = 20' SHEET NO. 2 OF 2 SHEETS STA. TO STA.