

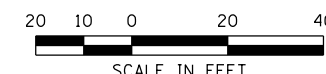
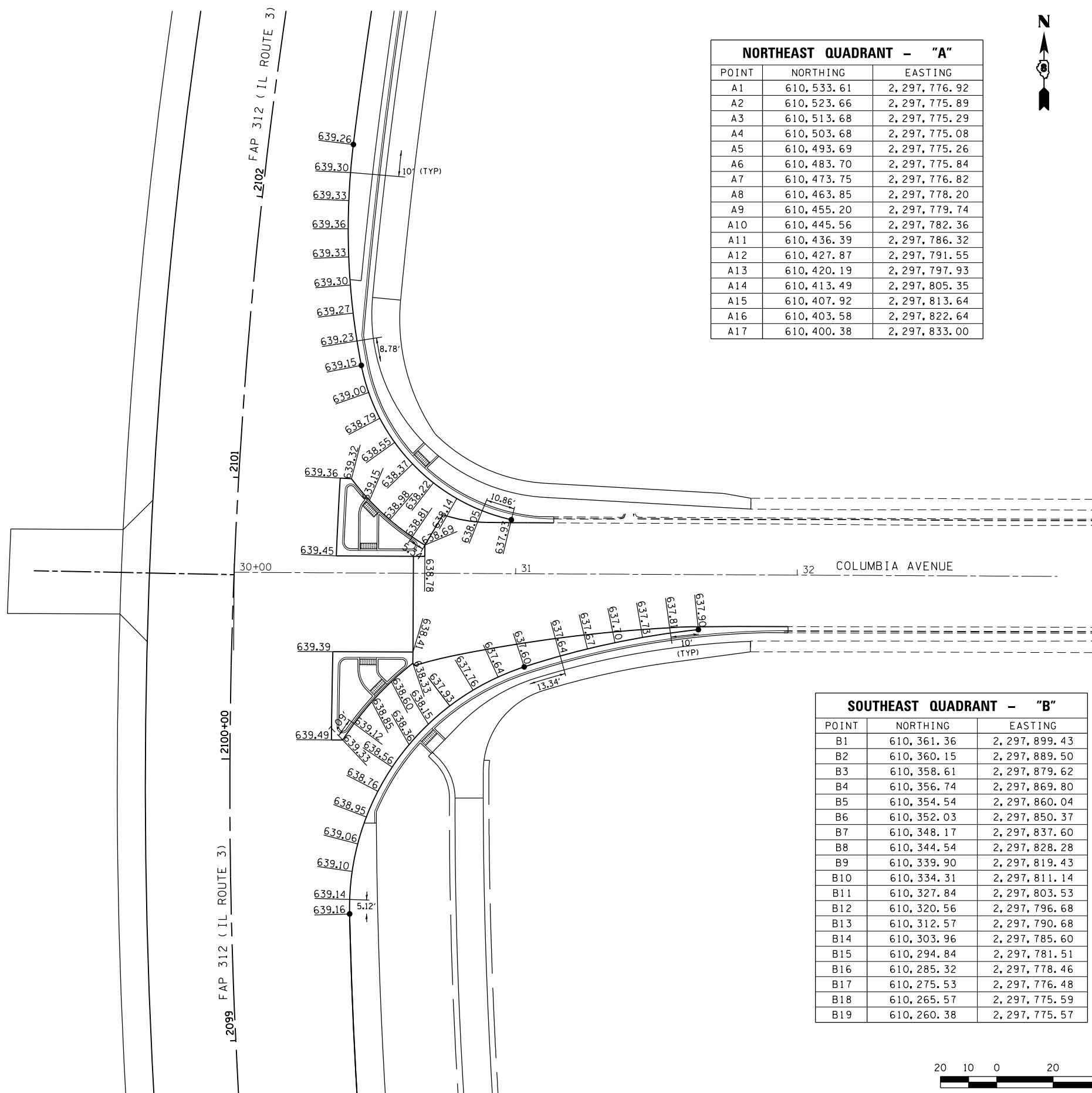


NORTHEAST QUADRANT - "A"		
POINT	NORTHING	EASTING
A1	610, 533.61	2, 297, 776.92
A2	610, 523.66	2, 297, 775.89
A3	610, 513.68	2, 297, 775.29
A4	610, 503.68	2, 297, 775.08
A5	610, 493.69	2, 297, 775.26
A6	610, 483.70	2, 297, 775.84
A7	610, 473.75	2, 297, 776.82
A8	610, 463.85	2, 297, 778.20
A9	610, 455.20	2, 297, 779.74
A10	610, 445.56	2, 297, 782.36
A11	610, 436.39	2, 297, 786.32
A12	610, 427.87	2, 297, 791.55
A13	610, 420.19	2, 297, 797.93
A14	610, 413.49	2, 297, 805.35
A15	610, 407.92	2, 297, 813.64
A16	610, 403.58	2, 297, 822.64
A17	610, 400.38	2, 297, 833.00

NORTHEAST ISLAND - "C"		
POINT	NORTHING	EASTING
C1	610, 387.54	2, 297, 770.83
C2	610, 415.16	2, 297, 772.24
C3	610, 414.93	2, 297, 776.24
C4	610, 407.25	2, 297, 782.64
C5	610, 400.34	2, 297, 789.85
C6	610, 394.26	2, 297, 797.79
C7	610, 391.39	2, 297, 802.30
C8	610, 387.39	2, 297, 802.28

SOUTHEAST ISLAND - "D"		
POINT	NORTHING	EASTING
D1	610, 353.55	2, 297, 769.65
D2	610, 353.41	2, 297, 798.05
D3	610, 349.41	2, 297, 798.03
D4	610, 342.92	2, 297, 790.43
D5	610, 335.77	2, 297, 783.44
D6	610, 328.01	2, 297, 777.14
D7	610, 322.18	2, 297, 773.10
D8	610, 322.21	2, 297, 769.10

SOUTHEAST QUADRANT - "B"		
POINT	NORTHING	EASTING
B1	610, 361.36	2, 297, 899.43
B2	610, 360.15	2, 297, 889.50
B3	610, 358.61	2, 297, 879.62
B4	610, 356.74	2, 297, 869.80
B5	610, 354.54	2, 297, 860.04
B6	610, 352.03	2, 297, 850.37
B7	610, 348.17	2, 297, 837.60
B8	610, 344.54	2, 297, 828.28
B9	610, 339.90	2, 297, 819.43
B10	610, 334.31	2, 297, 811.14
B11	610, 327.84	2, 297, 803.53
B12	610, 320.56	2, 297, 796.68
B13	610, 312.57	2, 297, 790.68
B14	610, 303.96	2, 297, 785.60
B15	610, 294.84	2, 297, 781.51
B16	610, 285.32	2, 297, 778.46
B17	610, 275.53	2, 297, 776.48
B18	610, 265.57	2, 297, 775.59
B19	610, 260.38	2, 297, 775.57



LAST SAVED = 1/24/2013
 PEN TABLE = V8-144-141
 PLOT DRIVER = pdfnclayersbw.pltcf9

FILE NAME =	USER NAME = beriechmann	DESIGNED -	REVISED -	STATE OF ILLINOIS DEPARTMENT OF TRANSPORTATION		INTERSECTION DETAILS FAP 312 (IL ROUTE 3) & COLUMBIA AVENUE		F.A.P. RTE. = 312	SECTION = 68-WRS-1	COUNTY = MONROE	TOTAL SHEETS = 760	SHEET NO. = 359		
		DRAWN -	REVISED -			SCALE: 1" = 20'		SHEET NO. 2 OF 2 SHEETS	STA. TO STA.	CONTRACT NO. 76817				
		CHECKED -	REVISED -			ILLINOIS FED. AID PROJECT								
		DATE -	REVISED -											