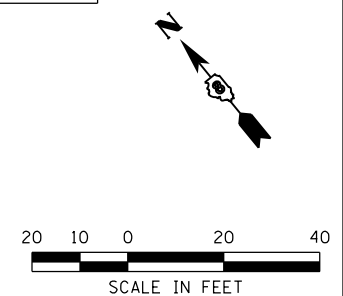
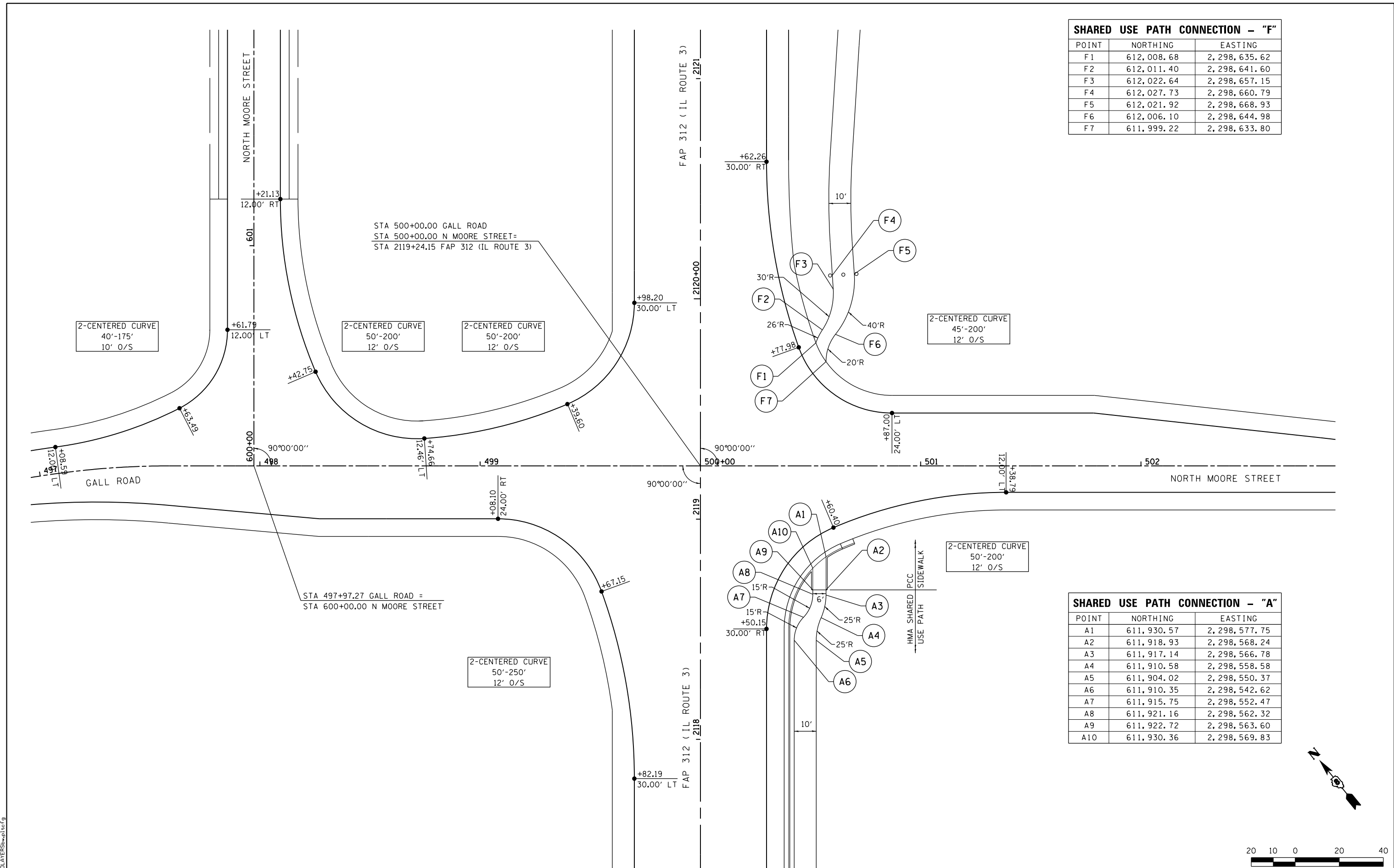


SHARED USE PATH CONNECTION - "F"		
POINT	NORTHING	EASTING
F1	612,008.68	2,298,635.62
F2	612,011.40	2,298,641.60
F3	612,022.64	2,298,657.15
F4	612,027.73	2,298,660.79
F5	612,021.92	2,298,668.93
F6	612,006.10	2,298,644.98
F7	611,999.22	2,298,633.80

SHARED USE PATH CONNECTION - "A"		
POINT	NORTHING	EASTING
A1	611,930.57	2,298,577.75
A2	611,918.93	2,298,568.24
A3	611,917.14	2,298,566.78
A4	611,910.58	2,298,558.58
A5	611,904.02	2,298,550.37
A6	611,910.35	2,298,542.62
A7	611,915.75	2,298,552.47
A8	611,921.16	2,298,562.32
A9	611,922.72	2,298,563.60
A10	611,930.36	2,298,569.83



LAST SAVED = 1/23/2013
 PEN TABLE = V8-244-441
 PLOT DRIVER = pdfplotlayers=plotted.ctb

FILE NAME =	USER NAME = beriechmann	DESIGNED -	REVISED -
I:\1001100\Phase II - 76817\Cad\T\Plans\082_0876817-sht-intersec-07.dgn		DRAWN -	REVISED -
PLOT SCALE = 40.0000' / in.		CHECKED -	REVISED -
PLOT DATE = 1/25/2013 3:33:20 PM		DATE -	REVISED -

STATE OF ILLINOIS
DEPARTMENT OF TRANSPORTATION



INTERSECTION DETAILS
 FAP 312 (IL ROUTE 3) & N MOORE STREET / GALL ROAD

F.A.P. RTE.	SECTION	COUNTY	TOTAL SHEETS	SHEET NO.
312	68-WRS-1	MONROE	760	360
CONTRACT NO. 76817				
ILLINOIS FED. AID PROJECT				

SCALE: 1" = 20' SHEET NO. 1 OF 2 SHEETS STA. TO STA.