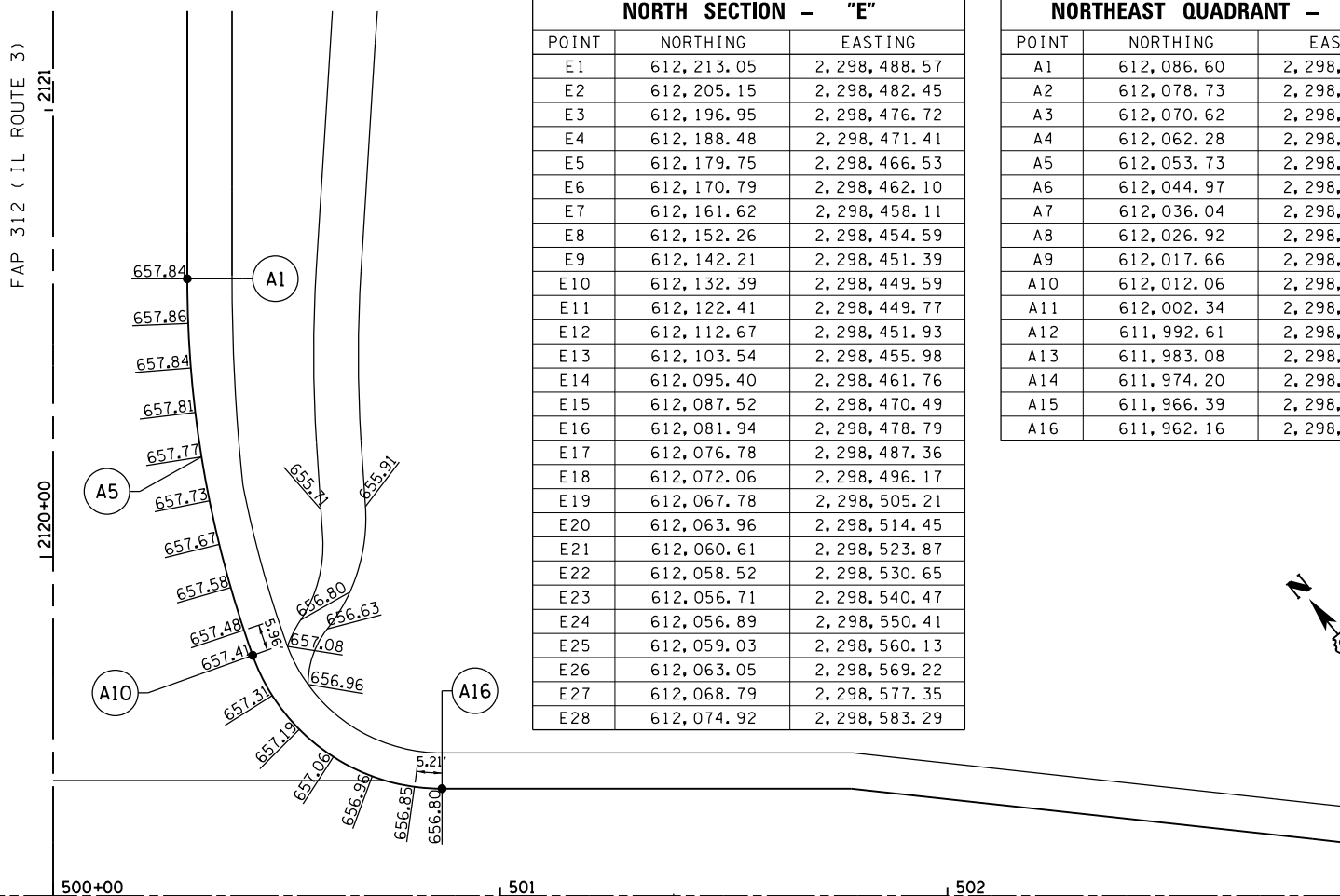


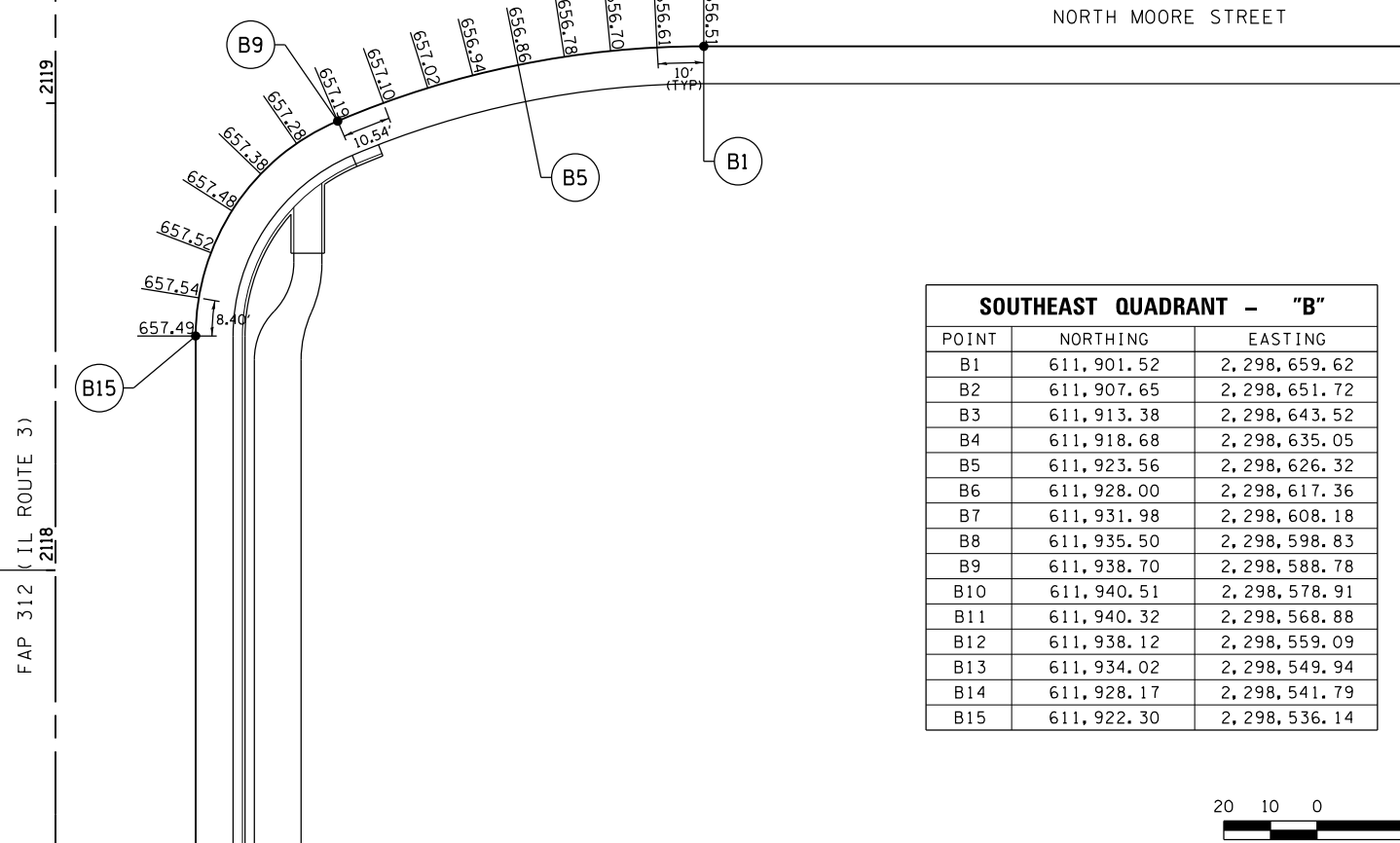
NORTHWEST QUADRANT - "D"		
POINT	NORTHING	EASTING
D1	612,190.43	2,298,338.25
D2	612,185.44	2,298,346.91
D3	612,180.95	2,298,355.85
D4	612,176.99	2,298,365.03
D5	612,173.55	2,298,374.42
D6	612,170.66	2,298,383.99
D7	612,168.45	2,298,393.06
D8	612,167.59	2,298,403.00
D9	612,169.21	2,298,412.84
D10	612,173.21	2,298,421.97
D11	612,179.36	2,298,429.83
D12	612,182.26	2,298,432.45

SOUTHWEST QUADRANT - "C"		
POINT	NORTHING	EASTING
C1	611,907.60	2,298,446.68
C2	611,915.47	2,298,452.84
C3	611,923.58	2,298,458.69
C4	611,931.92	2,298,464.21
C5	611,940.47	2,298,469.39
C6	611,949.22	2,298,474.23
C7	611,958.16	2,298,478.71
C8	611,967.27	2,298,482.83
C9	611,976.54	2,298,486.58
C10	611,982.82	2,298,488.88
C11	611,992.52	2,298,491.24
C12	612,002.50	2,298,491.62
C13	612,012.35	2,298,490.01
C14	612,021.68	2,298,486.47
C15	612,030.13	2,298,481.15
C16	612,038.13	2,298,473.33



NORTH SECTION - "E"		
POINT	NORTHING	EASTING
E1	612,213.05	2,298,488.57
E2	612,205.15	2,298,482.45
E3	612,196.95	2,298,476.72
E4	612,188.48	2,298,471.41
E5	612,179.75	2,298,466.53
E6	612,170.79	2,298,462.10
E7	612,161.62	2,298,458.11
E8	612,152.26	2,298,454.59
E9	612,142.21	2,298,451.39
E10	612,132.39	2,298,449.59
E11	612,122.41	2,298,449.77
E12	612,112.67	2,298,451.93
E13	612,103.54	2,298,455.98
E14	612,095.40	2,298,461.76
E15	612,087.52	2,298,470.49
E16	612,081.94	2,298,478.79
E17	612,076.78	2,298,487.36
E18	612,072.06	2,298,496.17
E19	612,067.78	2,298,505.21
E20	612,063.96	2,298,514.45
E21	612,060.61	2,298,523.87
E22	612,058.52	2,298,530.65
E23	612,056.71	2,298,540.47
E24	612,056.89	2,298,550.41
E25	612,059.03	2,298,560.13
E26	612,063.05	2,298,569.22
E27	612,068.79	2,298,577.35
E28	612,074.92	2,298,583.29

NORTHEAST QUADRANT - "A"		
POINT	NORTHING	EASTING
A1	612,086.60	2,298,670.29
A2	612,078.73	2,298,664.12
A3	612,070.62	2,298,658.27
A4	612,062.28	2,298,652.75
A5	612,053.73	2,298,647.57
A6	612,044.97	2,298,642.73
A7	612,036.04	2,298,638.25
A8	612,026.92	2,298,634.13
A9	612,017.66	2,298,630.38
A10	612,012.06	2,298,628.32
A11	612,002.34	2,298,626.05
A12	611,992.61	2,298,625.95
A13	611,983.08	2,298,627.94
A14	611,974.20	2,298,631.94
A15	611,966.39	2,298,637.76
A16	611,962.16	2,298,642.27



SOUTHEAST QUADRANT - "B"		
POINT	NORTHING	EASTING
B1	611,901.52	2,298,659.62
B2	611,907.65	2,298,651.72
B3	611,913.38	2,298,643.52
B4	611,918.68	2,298,635.05
B5	611,923.56	2,298,626.32
B6	611,928.00	2,298,617.36
B7	611,931.98	2,298,608.18
B8	611,935.50	2,298,598.83
B9	611,938.70	2,298,588.78
B10	611,940.51	2,298,578.91
B11	611,940.32	2,298,568.88
B12	611,938.12	2,298,559.09
B13	611,934.02	2,298,549.94
B14	611,928.17	2,298,541.79
B15	611,922.30	2,298,536.14



LAST SAVED = 1/23/2013
 PEN TABLE = W2441.dwg
 PLOT DRIVER = pdfplotlayers.pltcf9

FILE NAME =	USER NAME = beriechmann	DESIGNED -	REVISED -
I:\1001100\Phase II - 76817\Cad\T\Plans\082_0876817-sht-intersec-07A.dgn		DRAWN -	REVISED -
PLOT SCALE = 40.0000' / in.		CHECKED -	REVISED -
PLOT DATE = 1/25/2013 3:33:21 PM		DATE -	REVISED -

STATE OF ILLINOIS
DEPARTMENT OF TRANSPORTATION



INTERSECTION DETAILS
 FAP 312 (IL ROUTE 3) & MOORE STREET / GALL ROAD
 SCALE: 1" = 20' SHEET NO. 2 OF 2 SHEETS STA. TO STA.

F.A.P. RTE. 312	SECTION 68-WRS-1	COUNTY MONROE	TOTAL SHEETS 760	SHEET NO. 361
CONTRACT NO. 76817				
ILLINOIS FED. AID PROJECT				