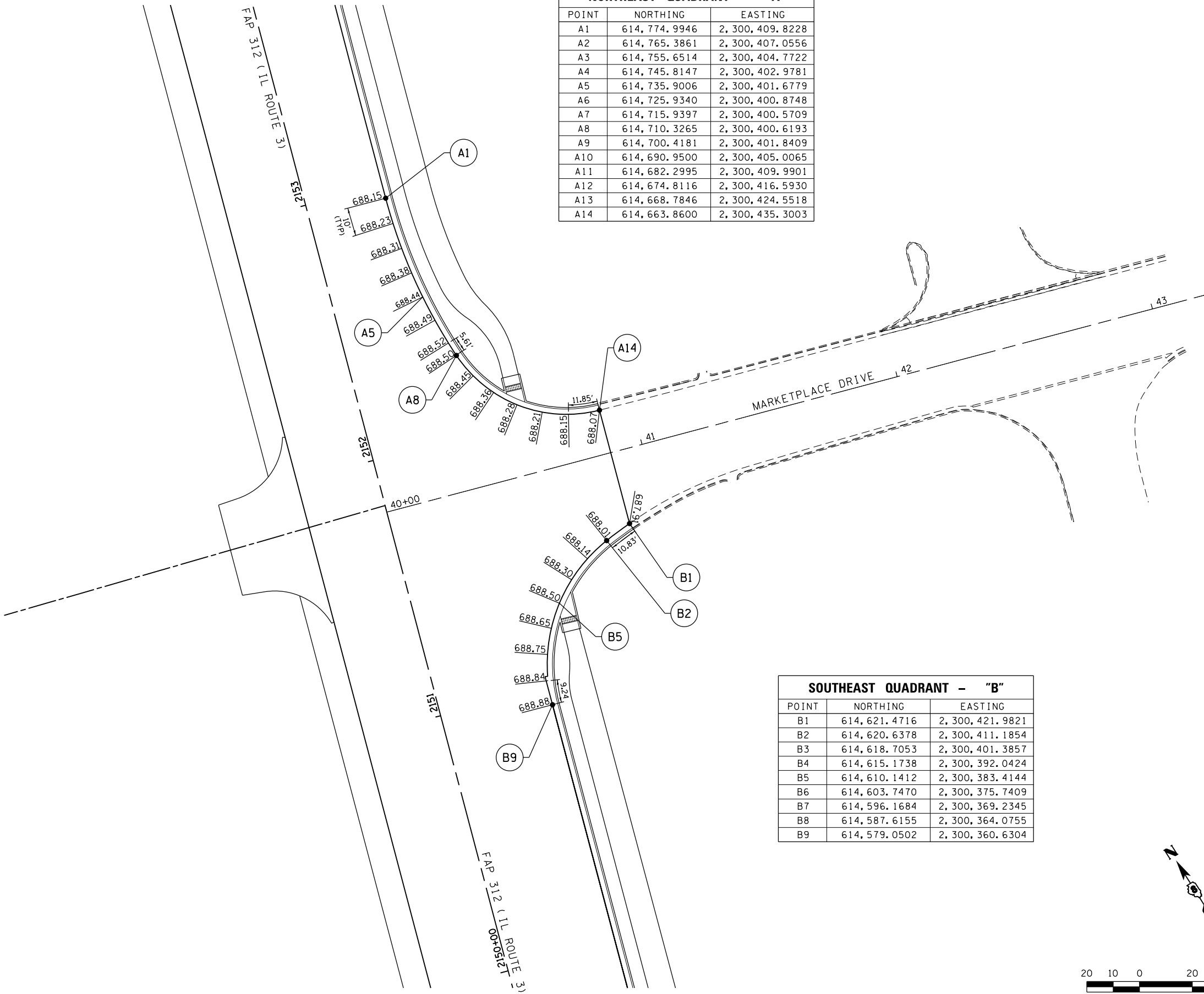


NORTHEAST QUADRANT - "A"		
POINT	NORTHING	EASTING
A1	614, 774. 9946	2, 300, 409. 8228
A2	614, 765. 3861	2, 300, 407. 0556
A3	614, 755. 6514	2, 300, 404. 7722
A4	614, 745. 8147	2, 300, 402. 9781
A5	614, 735. 9006	2, 300, 401. 6779
A6	614, 725. 9340	2, 300, 400. 8748
A7	614, 715. 9397	2, 300, 400. 5709
A8	614, 710. 3265	2, 300, 400. 6193
A9	614, 700. 4181	2, 300, 401. 8409
A10	614, 690. 9500	2, 300, 405. 0065
A11	614, 682. 2995	2, 300, 409. 9901
A12	614, 674. 8116	2, 300, 416. 5930
A13	614, 668. 7846	2, 300, 424. 5518
A14	614, 663. 8600	2, 300, 435. 3003

SOUTHEAST QUADRANT - "B"		
POINT	NORTHING	EASTING
B1	614, 621. 4716	2, 300, 421. 9821
B2	614, 620. 6378	2, 300, 411. 1854
B3	614, 618. 7053	2, 300, 401. 3857
B4	614, 615. 1738	2, 300, 392. 0424
B5	614, 610. 1412	2, 300, 383. 4144
B6	614, 603. 7470	2, 300, 375. 7409
B7	614, 596. 1684	2, 300, 369. 2345
B8	614, 587. 6155	2, 300, 364. 0755
B9	614, 579. 0502	2, 300, 360. 6304



LAST SAVED = 1/24/2013
 PEN TABLE = 1/24/2013
 PLOT DRIVER = pdfnclayershpwplctcf9

FILE NAME =	USER NAME = beriechmann	DESIGNED -	REVISED -
I:\1001100\Phase II - 76817\Cad\T\Plans\083_0876817-sht-intersec-08A.dgn		DRAWN -	REVISED -
	PLOT SCALE = 40.0000' / in.	CHECKED -	REVISED -
	PLOT DATE = 1/25/2013 3:33:23 PM	DATE -	REVISED -

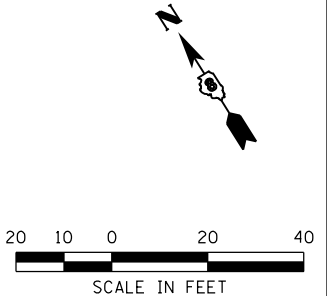
STATE OF ILLINOIS
DEPARTMENT OF TRANSPORTATION

HORNER & SHIFRIN, INC.
ENGINEERS

INTERSECTION DETAILS
 FAP 312 (IL ROUTE 3) & MARKETPLACE DRIVE

SCALE: 1" = 20' SHEET NO. 2 OF 2 SHEETS STA. TO STA.

F.A.P. RTE.	SECTION	COUNTY	TOTAL SHEETS	SHEET NO.
312	68-WRS-1	MONROE	760	363
CONTRACT NO. 76817				



20 10 0 20 40
 SCALE IN FEET

ILLINOIS FED. AID PROJECT