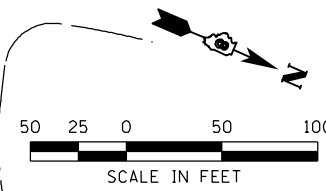
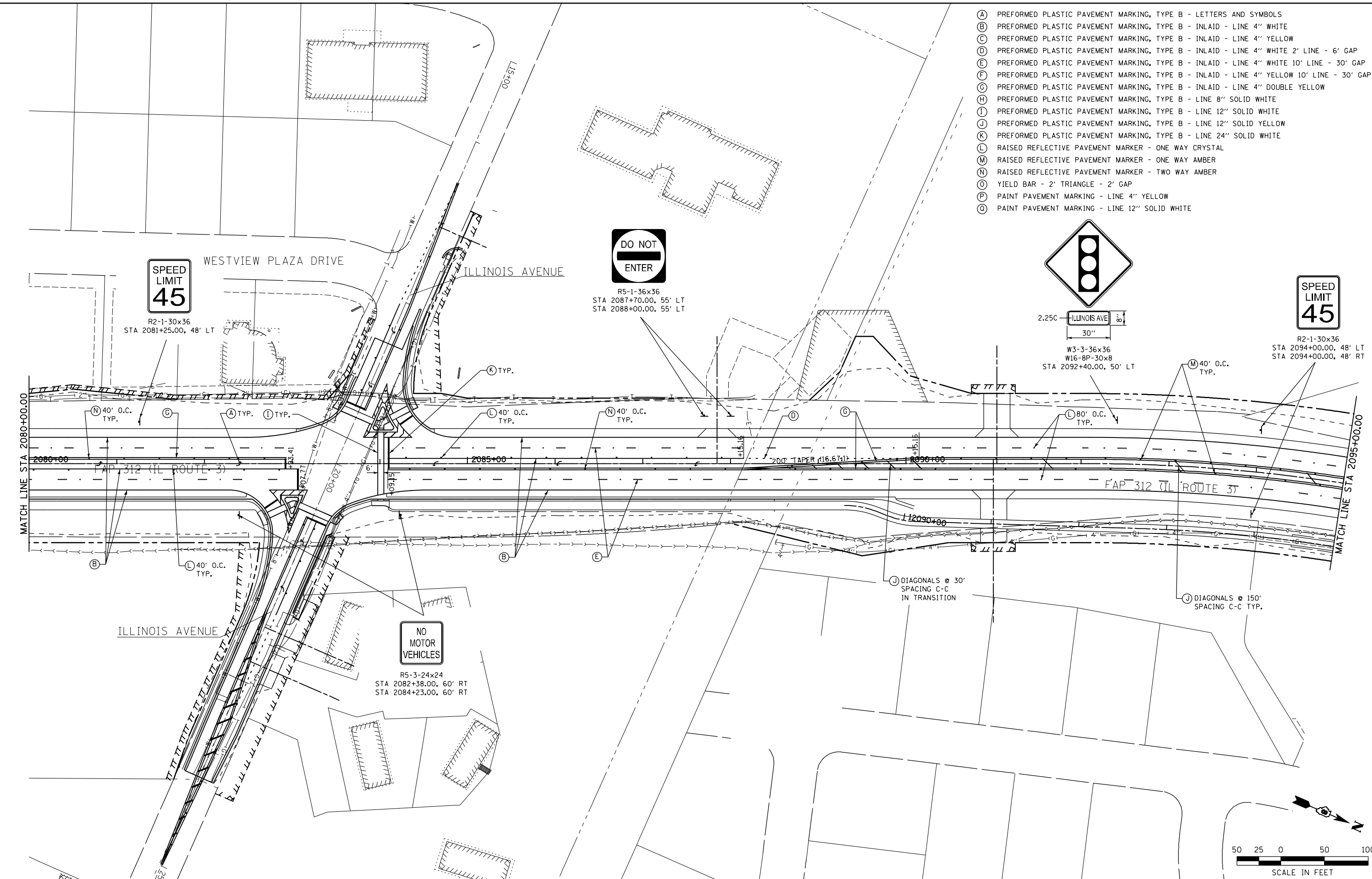
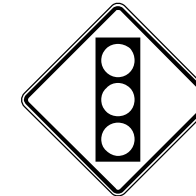


- (A) PREFORMED PLASTIC PAVEMENT MARKING, TYPE B - LETTERS AND SYMBOLS
- (B) PREFORMED PLASTIC PAVEMENT MARKING, TYPE B - INLAID - LINE 4" WHITE
- (C) PREFORMED PLASTIC PAVEMENT MARKING, TYPE B - INLAID - LINE 4" YELLOW
- (D) PREFORMED PLASTIC PAVEMENT MARKING, TYPE B - INLAID - LINE 4" WHITE 2' LINE - 6' GAP
- (E) PREFORMED PLASTIC PAVEMENT MARKING, TYPE B - INLAID - LINE 4" WHITE 10' LINE - 30' GAP
- (F) PREFORMED PLASTIC PAVEMENT MARKING, TYPE B - INLAID - LINE 4" YELLOW 10' LINE - 30' GAP
- (G) PREFORMED PLASTIC PAVEMENT MARKING, TYPE B - INLAID - LINE 4" DOUBLE YELLOW
- (H) PREFORMED PLASTIC PAVEMENT MARKING, TYPE B - LINE 8" SOLID WHITE
- (I) PREFORMED PLASTIC PAVEMENT MARKING, TYPE B - LINE 12" SOLID WHITE
- (J) PREFORMED PLASTIC PAVEMENT MARKING, TYPE B - LINE 12" SOLID YELLOW
- (K) PREFORMED PLASTIC PAVEMENT MARKING, TYPE B - LINE 24" SOLID WHITE
- (L) RAISED REFLECTIVE PAVEMENT MARKER - ONE WAY CRYSTAL
- (M) RAISED REFLECTIVE PAVEMENT MARKER - ONE WAY AMBER
- (N) RAISED REFLECTIVE PAVEMENT MARKER - TWO WAY AMBER
- (O) YIELD BAR - 2' TRIANGLE - 2' GAP
- (P) PAINT PAVEMENT MARKING - LINE 4" YELLOW
- (Q) PAINT PAVEMENT MARKING - LINE 12" SOLID WHITE



FILE NAME =	USER NAME = Richard Heinke	DESIGNED - JAH	REVISED -	STATE OF ILLINOIS DEPARTMENT OF TRANSPORTATION	 McDonough-Whillow P.C. <small>PROFESSIONAL DESIGN NO. 184-002754</small>	PAVEMENT MARKING AND SIGNING PLAN	F.A.P. RTE. 312	SECTION 68-WRS-1	COUNTY MONROE	TOTAL SHEETS 760	SHEET NO. 374		
F:\Projects\IDOT PROJECTS\09-101-11.4\Drawings\CADD Sheets\Contract 2\178_0876817-sh	DRAWN - RNH	CHECKED - TMM	REVISED -			SCALE: 1" = 50'	SHEET NO. 8 OF 21 SHEETS	IL ROUTE 3	STA. 2080+00.00 TO STA. 2095+00.00	CONTRACT NO. 76817			
PLOT SCALE = 100.0000' / in.	DATE -	DATE -	REVISED -			ILLINOIS FED. AID PROJECT							
PLOT DATE = 1/24/2013	DATE -	DATE -	REVISED -										