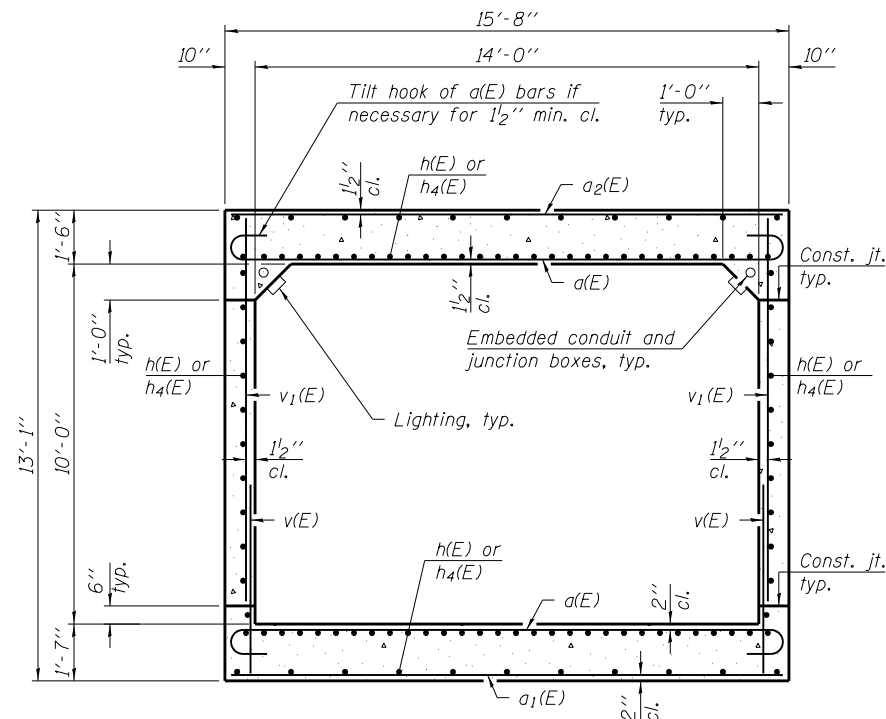


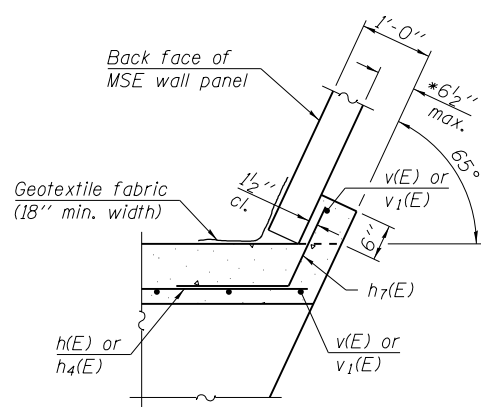
HALF LONG SECTION

HALF ELEVATION

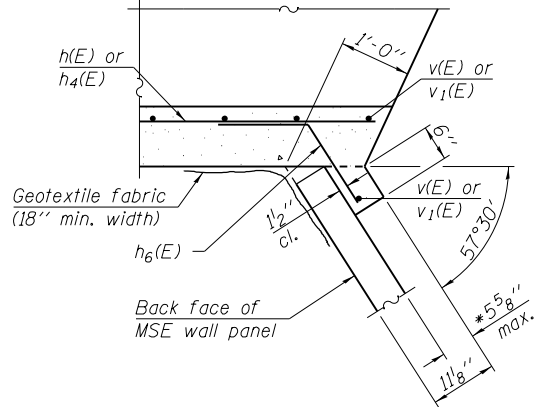
Dimensions at Rt. L's to \varnothing Roadway



SECTION THRU BARREL

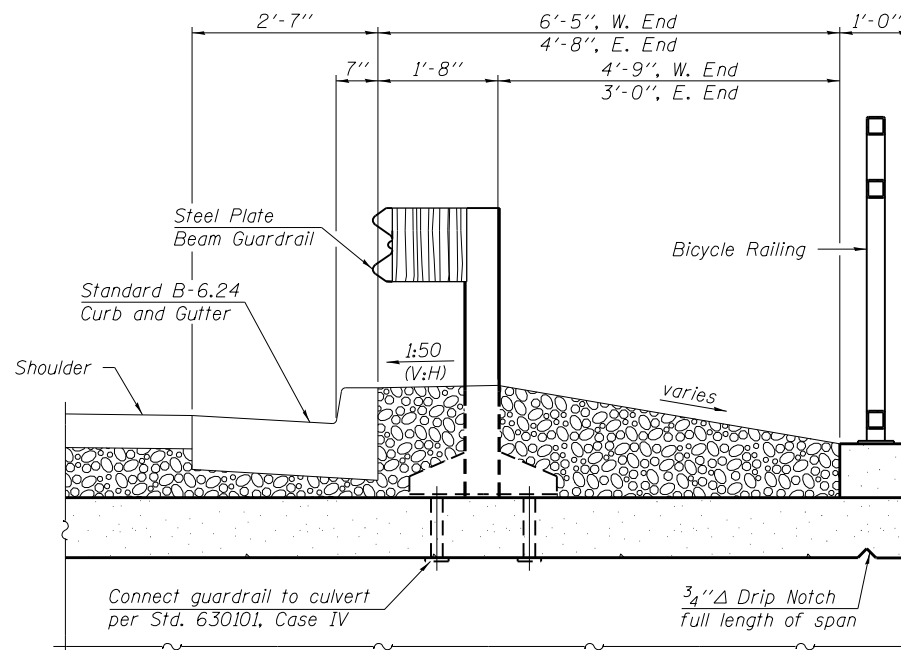


MSE WALL TO CULVERT CONNECTION DETAIL
(NE Wing shown, SW Wing similar)



MSE WALL TO CULVERT CONNECTION DETAIL
(SE Wing shown, NW Wing similar)

*Dimension may vary due to MSE wall panel thickness.
Contractor to verify MSE wall panel thickness prior to forming.



GUARDRAIL MOUNTING DETAIL

MINIMUM BAR LAP
#5 BAR = 2'-11"

Notes:
For lighting, conduits and junction box details, see Lighting Plans.
Bars indicated thus 11 x 2 - #5 etc. indicates 11 lines of bars with 2 lengths per line.
For Culvert Plan, see sheet 6 of 20.
For Bicycle Railing post spacing, bar bending details and Bill of Material, see sheet 8 of 20.
For Bar Splicer details, see sheet 14 of 20.