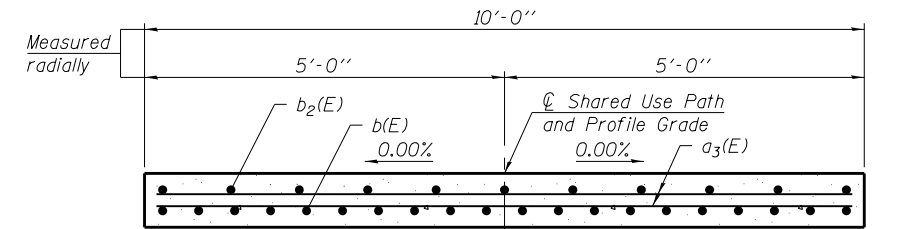
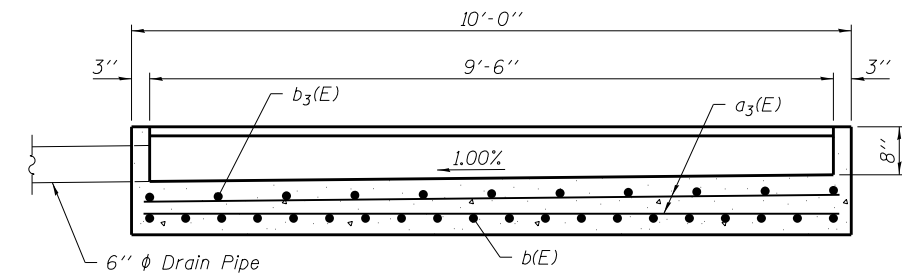


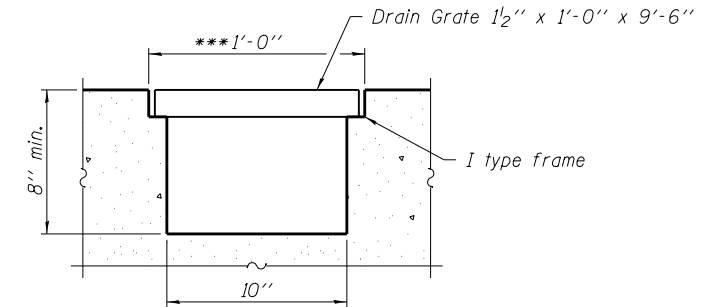
PLAN



SECTION B-B

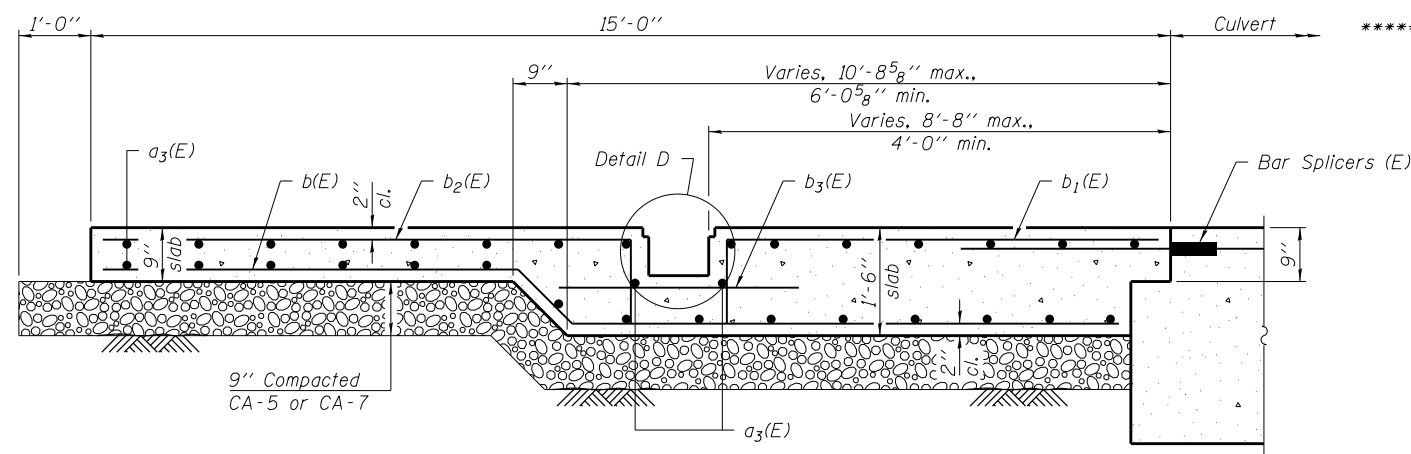


SECTION C-C



DETAIL D

- \* Order a<sub>3</sub>(E) bars full length. Cut to fit skew and use remainder of bars in opposite end.
- \*\* Field bend bars to follow curvature of approach slab. Cut to fit skew.
- \*\*\* Dimension shall be determined by the manufacturer of the cast iron grate and frame.
- \*\*\*\* Long dimension of slots in drain grate are to be set perpendicular to traffic.
- \*\*\*\*\* Cut to fit skew.



SECTION A-A

PLAN - TYPE C SLOTTED DRAIN GRATE

Notes:  
 All cast iron parts of the slotted drain shall be gray iron conforming to the requirements of AASHTO M 105, Class 30.  
 Bolts, washers and nuts shall conform to the requirements of ASTM A 307.  
 All bolts, washers and nuts shall be galvanized according to AASHTO M 232.  
 Approach slab shall be paid for as Concrete Structures.  
 Reinforcement shall be paid for as Reinforcement Bars, Epoxy Coated.  
 Cost of drain grate, frame, bolts, washers, nuts, drain pipe, and compacted CA-5 or CA-7 including complete installation is included in Concrete Structures.  
 For bar bending details and Bill of Material, see sheet 13 of 20.  
 For bar splicer details, see sheet 14 of 20.