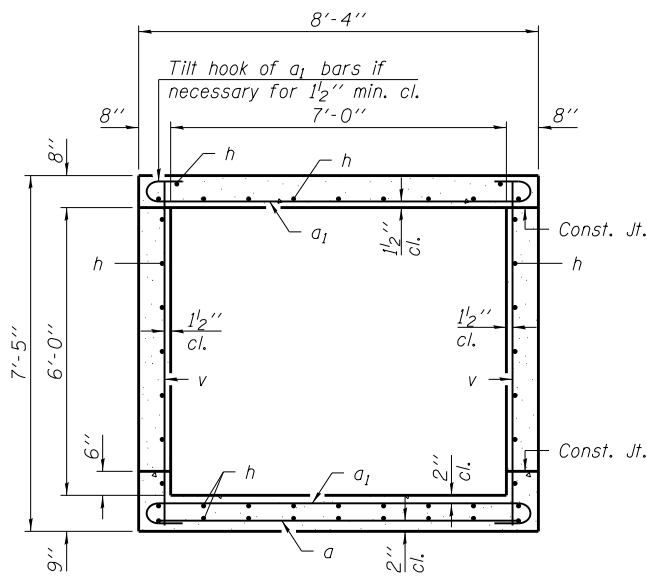
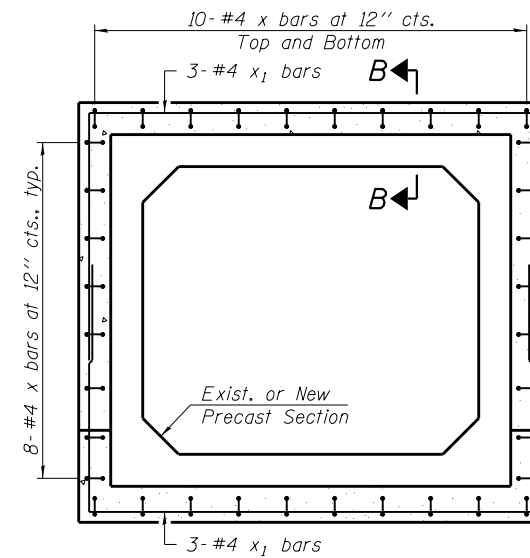


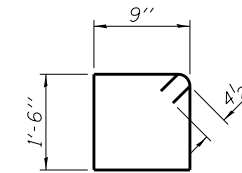
LONGITUDINAL SECTION



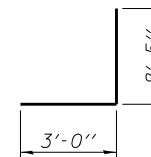
SECTION THRU BARREL



SECTION A-A

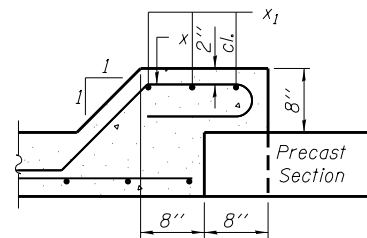


BAR s

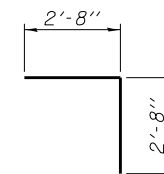


BAR v1

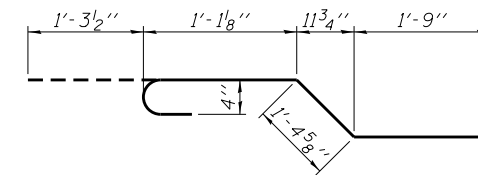
- * Cut bars to fit.
- ** 6-#6 a1 bars at 8" cts., Bottom of Top Slab & Top of Bottom Slab
- *** 3-#4 a bars at 1'-8" cts., Bottom of Bottom Slab
- **** 7-#5 v bars at ±12" cts., Short Wall
- 8-#5 v bars at ±12" cts., Long Wall



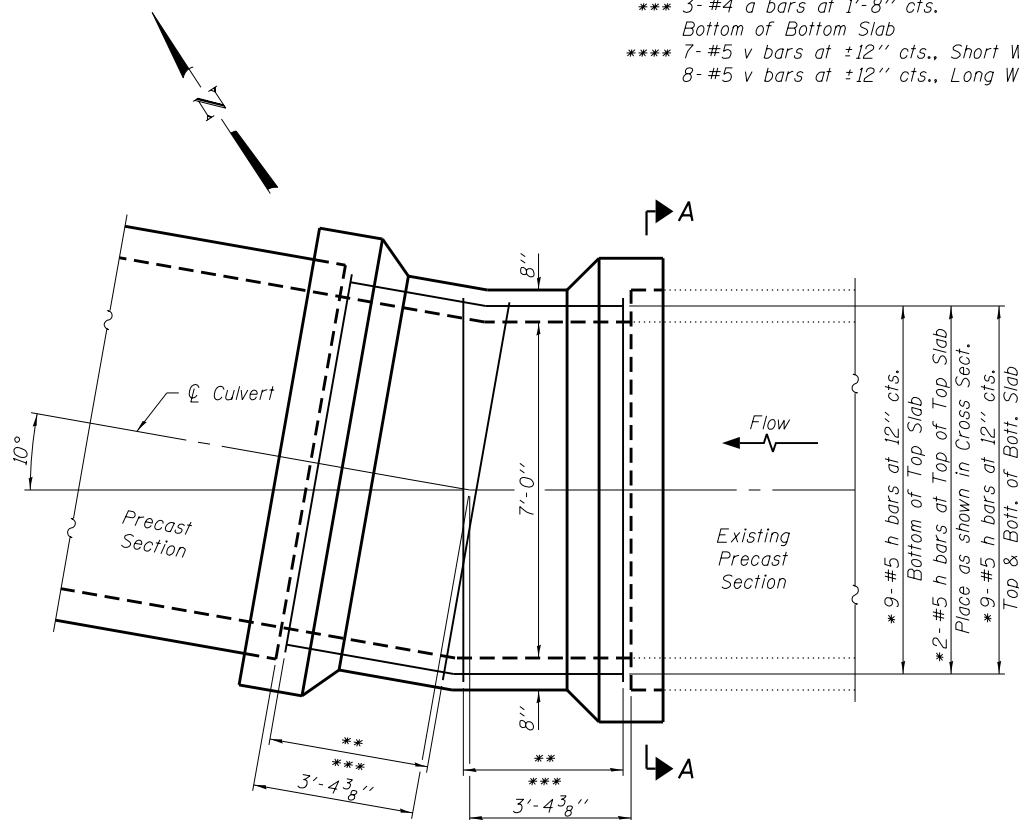
SECTION B-B



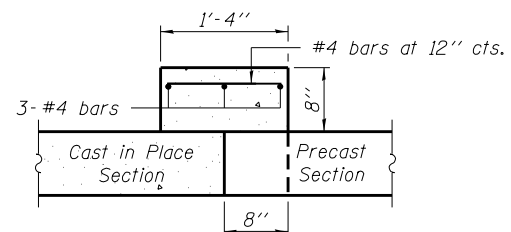
BAR d



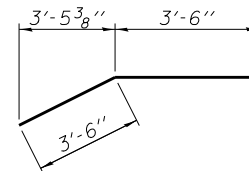
BAR x



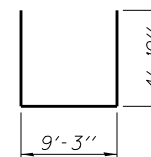
PLAN



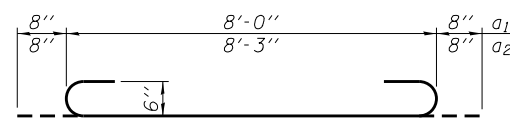
ALTERNATE SECTION B-B



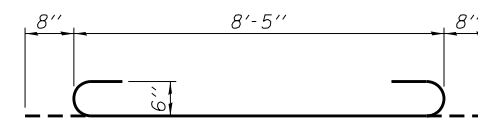
BAR h



BAR x1



BARS a1 & a2



BAR h1

Note:
For Bill of Material, see sheet 2 of 3.

LAST SAVED = 1/23/2013
 PEN TABLE = 1/23/2013
 PLOT DRIVER = pdfnclayers.pltcf9

FILE NAME =	USER NAME = elagemann	DESIGNED E.M. Lagemann	REVISED -
1:\1001100\Phase II - 76817\Cad\S\Plans\Headwalls-76817.dgn		DRAWN E.M. Lagemann	REVISED -
	PLOT SCALE = 0:2.0000 '1' = 1"	CHECKED K.L. Hayes	REVISED -
	PLOT DATE = 1/23/2013 11:46:17 AM	DATE 12/21/12	REVISED -

**STATE OF ILLINOIS
DEPARTMENT OF TRANSPORTATION**

**HORNER &
SHIFRIN, INC.
ENGINEERS**

KINK DETAILS
CULVERT AT STA. 2016+44.66
SCALE: SHEET NO. 1 OF 3 SHEETS STA. 2015+24.21 TO STA. 2017+98.20

F.A.P. RTE.	SECTION	COUNTY	TOTAL SHEETS	SHEET NO.
312	68-WRS-1	MONROE	760	434
			CONTRACT NO. 76817	
ILLINOIS FED. AID PROJECT				