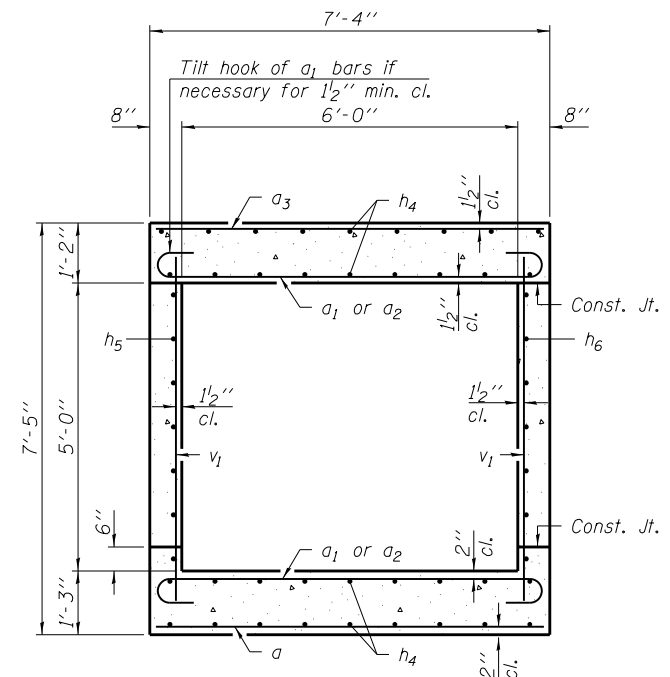
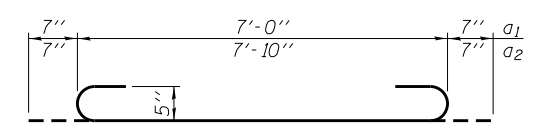


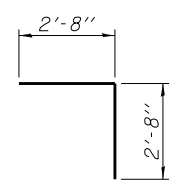
LONGITUDINAL SECTION



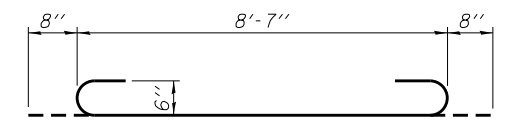
SECTION THRU BARREL
(Looking upstream)



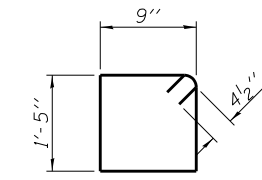
BARS a1 & a2



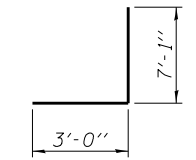
BAR d



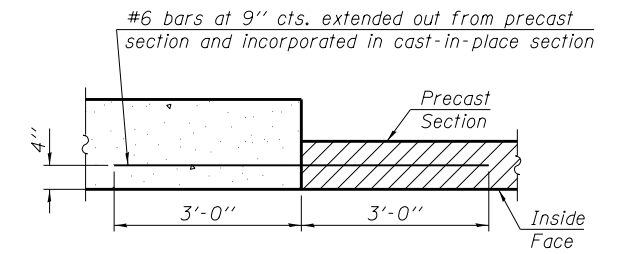
BAR h



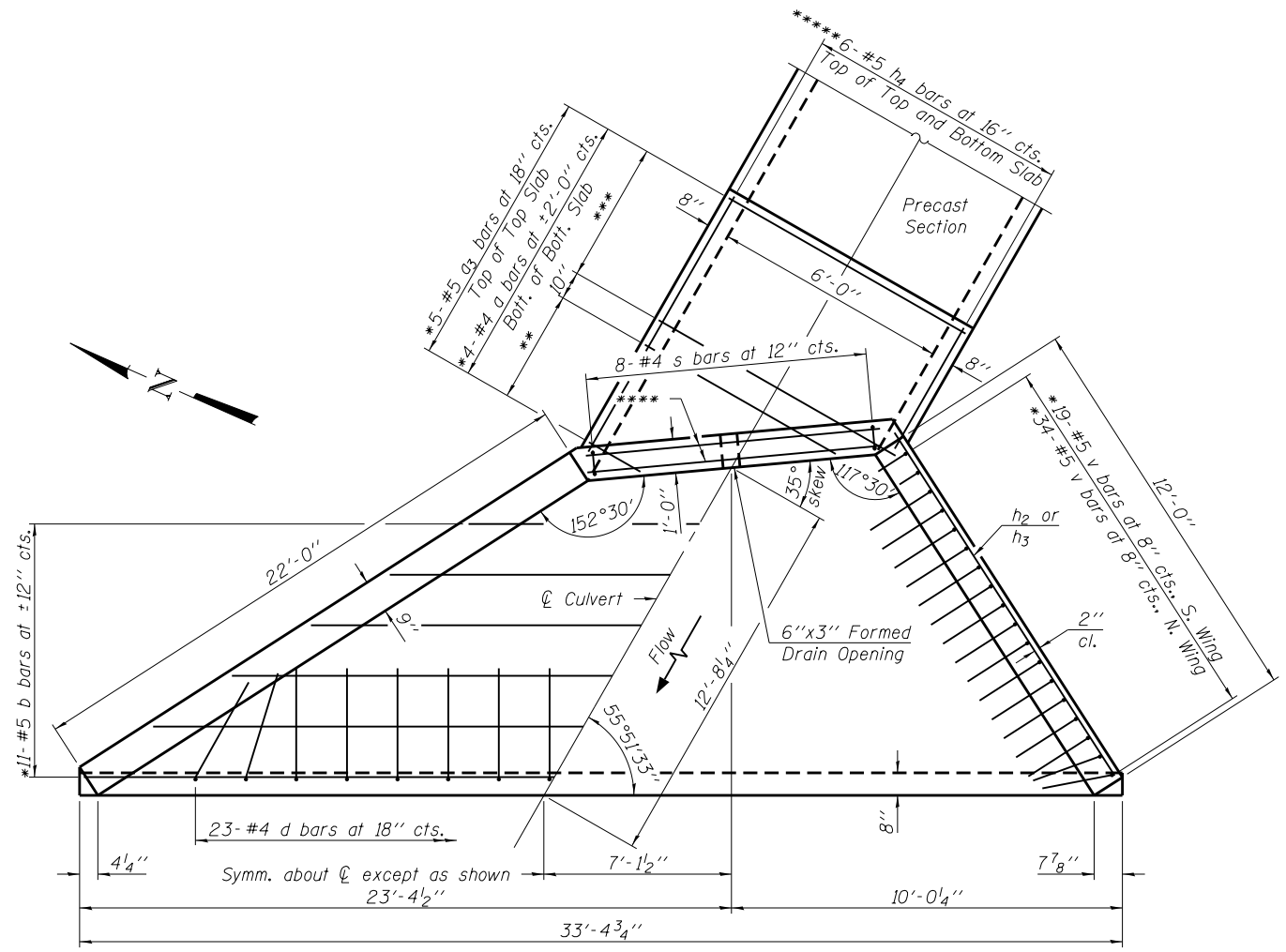
BAR s



BAR v



PRECAST TO CAST-IN-PLACE CONNECTION
(Barrel reinforcement not shown for clarity)



PLAN

- * Cut bars to fit.
- ** 5-#5 a2 bars at 10" cts., Bott. of Top Slab
Cut to fit skew and place remainder in Top of Bott. Slab. Place hooked end along outside edge of slab.
- *** 4-#5 a1 bars at 10" cts., Bott. of Top Slab and Top of Bottom Slab
- **** 2-#6 h bars in Bott. of Headwall and Top of Bott. Slab
2-#6 h1 bars in Top of Headwall
- ***** Cut to fit skew and place remainder in Bottom of Top and Bott. Slab
- ***** 8-#5 v1 bars at 12" cts., N. Wall
4-#5 v1 bars at 12" cts., S. Wall
- ***** 6-#5 h5 bars at ±12" cts., N. Wall
6-#5 h6 bars at ±12" cts., S. Wall

Notes:
For Bill of Materials, see sheet 3 of 3.
For flowline elevations not shown, see roadway cross-sections.

LAST SAVED = 1/23/2013 11:46:22 AM
 PEN TABLE = W24414141
 PLOT DRIVER = pdfNCLAYERS=plctcf9

FILE NAME = 1:\1001100\Phase II - 76817\Cad\S\Plans\Headwalls-76817.dgn	USER NAME = elagemann	DESIGNED E.M. Lagemann	REVISED -	STATE OF ILLINOIS DEPARTMENT OF TRANSPORTATION	HORNER & SHIFRIN, INC. ENGINEERS	DOWNSTREAM APRON DETAILS CULVERT AT STA. 2042+25.02	F.A.P. RTE. = 312	SECTION = 68-WRS-1	COUNTY = MONROE	TOTAL SHEETS = 760	SHEET NO. = 439
PLOT SCALE = 0:2.0000 '1' / in.	CHECKED K.L. Hayes	REVISOR -	SCALE:				SHEET NO. 1 OF 3 SHEETS	STA. 2041+57.71 TO STA. 2043+11.81	CONTRACT NO. 76817		
PLOT DATE = 1/23/2013 11:46:22 AM	DATE = 1/10/13	REVISOR -					ILLINOIS FED. AID PROJECT				