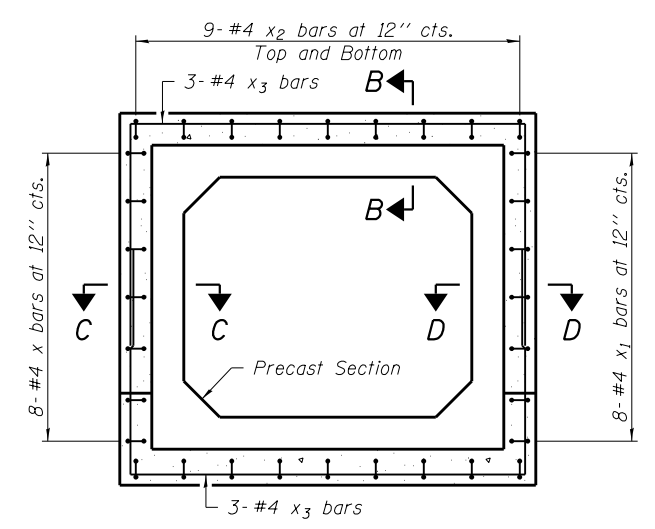
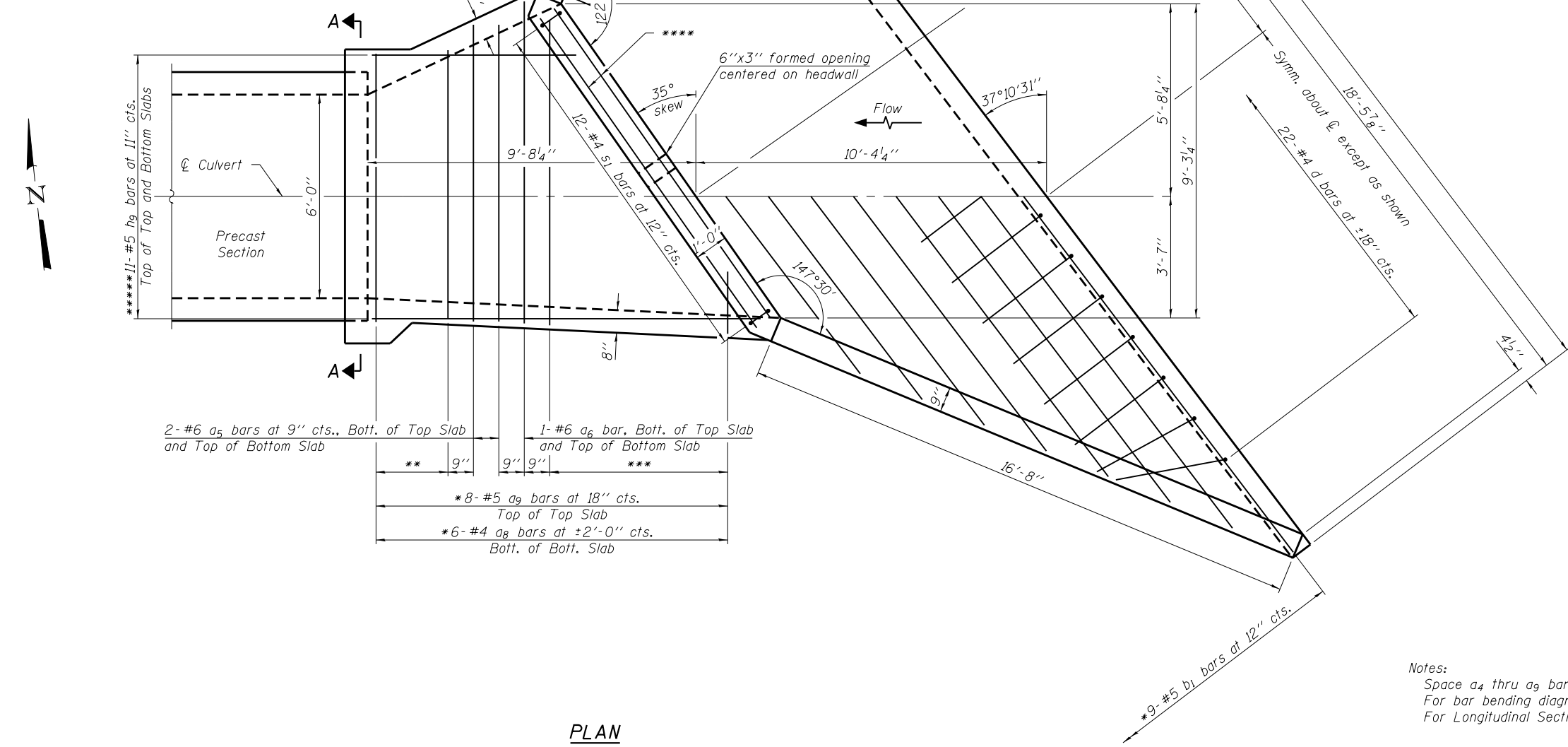


SECTION THRU BARREL
(Looking downstream)



SECTION A-A



PLAN

- * Cut bars to fit.
- ** 4-#6 a₄ bars at 9" cts., Bott. of Top Slab and Top of Bottom Slab
- *** 8-#6 a₇ bars at 9" cts., Bott. of Top Slab Cut to fit skew and place remainder in Top of Bott. Slab. Place hooked end along outside edge of slab.
- **** 2-#6 h₇ bars in Bott. of Headwall and Top of Bott. Slab
- 2-#6 h₈ bars in Top and Sides of Headwall
- ***** Cut to fit skew and place remainder in Bottom of Top and Bott. Slab

Notes:
Space a₄ thru a₉ bars perpendicular to \varnothing Culvert.
For bar bending diagrams and Bill of Materials, see sheet 3 of 3.
For Longitudinal Section and Sections B-B, C-C, and D-D, see sheet 3 of 3.

LAST SAVED = 1/23/2013 11:46:23 AM
 PEN TABLE = V2-244-141
 PLOT DRIVER = pdfINCLAYERS=shatcf9

FILE NAME =	USER NAME = elagemann	DESIGNED E.M. Lagemann	REVISED -	STATE OF ILLINOIS DEPARTMENT OF TRANSPORTATION		SLOPED TAPERED INLET DETAILS		F.A.P. RFE.	SECTION	COUNTY	TOTAL SHEETS	SHEET NO.
1:\1001100\Phase II - 76817\Cad\5-Plans\Headwalls-76817.dgn		DRAWN E.M. Lagemann	REVISED -			312	68-WRS-1	MONROE	760	440		
PLOT SCALE = 0:2.0000 '1' / in.		CHECKED K.L. Hayes	REVISED -			CONTRACT NO. 76817						
PLOT DATE = 1/23/2013 11:46:23 AM		DATE 1/10/13	REVISED -			ILLINOIS FED. AID PROJECT						
				SCALE:	SHEET NO. 2 OF 3 SHEETS	STA. 2041+57.71 TO STA. 2043+11.81						